



# WORLD'S BEST CHEESES

## RETAIL READY GUIDE - 2023 EDITION



# TABLE OF CONTENTS

	Page Number
<b>IMPORTED CHEESES</b>	<b>1 -19</b>
<b>DOMESTIC CHEESES</b>	<b>20 - 37</b>
<b>DOMESTIC BUTTER</b>	<b>37</b>
<b>PLANT BASED PRODUCTS</b>	<b>37</b>
<b>CHEESE ACCOMPANIMENTS</b>	<b>37 - 46</b>
<b>MISC GOURMET &amp; SPECIALTY GROCERY</b>	<b>46 - 47</b>
<b>MUSTARDS</b>	<b>47 - 48</b>
<b>ASIAN SPECIALTY</b>	<b>48</b>
<b>OILS &amp; VINEGARS</b>	<b>48 - 50</b>
<b>OLIVES, TOMATOES, PICKLES &amp; MISC. VEG</b>	<b>50 - 52</b>
<b>SEAFOOD</b>	<b>53 - 55</b>
<b>SPECIALTY MEATS &amp; PATE</b>	<b>57 - 63</b>
<b>SPECIALTY YOGURT</b>	<b>64</b>
<b>SPREADS &amp; DIPS</b>	<b>65 - 67</b>
<b>SAUCES</b>	<b>67</b>
<b>WRAPS &amp; BREADS</b>	<b>67</b>
<b>CRACKERS ,COOKIES, AND CHIPS</b>	<b>67 - 78</b>
<b>GRAINS AND PASTA</b>	<b>78</b>
<b>SPECIALTY DRINKS</b>	<b>79</b>
<b>CONFECTIONS</b>	<b>79 - 83</b>
<b>HORS D'OEUVRES</b>	<b>83</b>



ITEM#	NEW DESCRIPTION	Pack size
	<b>IMPORTED CHEESES: AUSTRALIA</b>	
11806	MEREDITH DAIRY MARINATED SHEEP/GOAT	6/300G
2637	OLD CROC SHARP CHEDDAR BITES BAG	12/6 oz
11835	SUMMER LAND PERSIAN FETA CAMEL MILK	6/230G
	<b>IMPORTED CHEESES: AUSTRALIA--Kris Lloyd</b>	
11821	KL PERSIAN BUFFALO 1/1K	1/1K
11820	KL PERSIAN BUFFALO MILK 6/300ML	6/300ML
11851	KL PERSIAN BUFFALO 12/200G (P)	12/200G
11852	KL PERSIAN BUFFALO LEMON MYRTLE	12/200G
11853	KL PERSIAN BUFF SMOKY BUSH TOMATO	12/200G
11854	KL PERSIAN BUFFALO OUTBACK CHILLI	12/200G
11855	KL FIG & STAR ANISE JAM 6/235G (P)	6/235G
11817	KL ARTISAN ANT HILL GOAT 6/100G	6/100G
11813	KL ARTISAN BUFF CURD 6/200G	6/200G
11814	KL ARTISAN GRACE GOAT 6/140G	6/140G
11822	KL BUSH BUFF 6/150G	6/150G
11815	KL CREAMY BUFF W/ FLINDERS 6/150G	6/150G
11816	KL CREAMY BUFF W/ HERBS 6/150G	6/150G
11819	KL IN THE BUFF 6/150G	6/150G
11829	WOODSIDE BLACKWOOD HONEY BEE 6/120G	6/120G
11823	WOODSIDE CHEESE EDITH GOAT 6/150G	6/150G
11833	WOODSIDE GIN CHEDDAR TRUCKLES 170G	6/170G
11825	WOODSIDE GOAT LEMON MYRTLE 6/150G	6/150G
11828	WOODSIDE GOAT MONET 6/120G	6/120G
11824	WOODSIDE GOAT ON A HOT TIN ROOF 6/150G	6/150G
11826	WOODSIDE GOAT SALTBUSH 6/150G	6/150G
11827	WOODSIDE GOAT SWAG 6/150G	6/150G
11830	WOODSIDE GOLDEN BLOSSOM 6/120G	6/120G
11831	WOODSIDE VIGNERON GOAT IN VINE LEAV	6/110G

2637



11835



11817



11806



11828

	<b>IMPORTED CHEESES: BULGARIA</b>	
42911	BULGARIAN FETA RETAIL	12/200G
	<b>IMPORTED CHEESES: CANADA</b>	
4513	BLACK DIAMOND CHEDDAR BAR	12/6 oz
0210	BLACK DIAMOND PORTIONS	100/.75 oz
0217	BLACK DIAMOND SHARP SPREAD	12/8 oz
3087	CELEBRITY LAVENDAR HONEY SHEEPS LOG	12/4OZ
3088	CELEBRITY PLAIN SHEEPS MILK LOGS	12/4OZ
10223	EIFFEL TOWER KOSHER BRIE 12/7 OZ	12/7 oz
10224	EIFFEL TOWER KOSHER CAMEMBERT 12/7 OZ	12/7 oz
	<b>IMPORTED CHEESES: CYPRUS</b>	
4551	GRILLIES HALLOUMI	12/8.8 oz
4550	GRILLIES HALLOUMI BURGER SLICES	12/8.8 oz
4554	GRILLIES VEGAN GRILLING CHEESE	12/7OZ
SC010	MEDITERRANEAN SHEPHERDS HALLOUMI	12/8.8 oz
	<b>IMPORTED CHEESES: DENMARK</b>	
0364	DANISH BLUE CRUMBLED CUPS	6/5 oz
0345	DANISH BRIE IN TINS	12/4.4 oz
0331	DANISH CAMEMBERT IN TINS	12/4.4 oz
0365	DANISH FETA JARS	6/5.25 oz
0335	HAVARTI MINI DILL	12/8 oz
0330	HAVARTI MINI PLAIN	12/8 oz
0373	LURPAK BUTTER SALTED	20/8 oz
0371	LURPAK BUTTER UNSALTED	20/8 oz
0376	ROSENBORG DANISH BLUE TRAD WEDGES	8/4.4 oz
0377	ROSENBORG EX CREAMY BLUE WEDGES	8/4.4 oz

42911



SC010



4550



3088

3087



	<b>IMPORTED CHEESES: FRANCE</b>	
19852	ARC DE TRIOMPHE BRIE 60% 16OZ	6/16 OZ
10668	CHATELAIN CAMEMBERT	12/8 OZ
1094	DELICE DE BOURGOGNE MINI	6/200g
23030	EPOISSE BERTHAUT 1/2 MOON	6/125G
1101	EPOISSES AOC BURNED BOX,BERTHAUT AIR	6/250g
21525	EPOISSES AOC BURNED BOX,BERTHAUT BOAT	6/250G
10937	FETA, VALBRESO R/W	12/7 oz
23470	FROMAGE DES CLARINES, PERRIN 7/250G - BOAT	7/250G
23473	FROMAGE DES CLARINES, PERRIN 7/250G- AIR	7/250G
11219	FROMAGER DAFFINOIS BLEU 8/6OZ	8/6OZ
38090	FROMAGES FRAIS AUX FRUITS 6/400G	6/400G
0628	HENRI HUTIN TOURS DE PARIS R/W BRIE	8/200g
17899	JACQUIN BUCHETTES AUX FLEURS 6/100G	6/100G
38153	LANGRES GERMAIN 6/180G P	6/180G
19900	NOTRE DAME BRIE 7oz	12/7 OZ
27724	PETIT SUISSE 20% FRUIT	16/6/60GM
1298	PICO AFFINE PICANDINE (P)	6/100G
10741	PICO AFFINE PICANDINE AIR (P)	6/100G
26214	PIERRE ROBERT MINI 9/100G BOAT (P)	9/100G
5058	PORT SALUT WEDGES	10/5.3 oz
23357	PREFERE DE FROMI REBLECHON 6/250GP	6/250G
20330	PRESIDENT BEURRE TUBS 40/250G	40/250G
0873	PRESIDENT COMTE 45%	6/250g
23353	REBLECHON PREFERE DE FROMI (P)	6/500 GM
0914	ROQUEFORT SOCIETE BEE WEDGES	10/3.5oz
26213	ROUZAIRE PIERRE ROBERT MINI, 9/100G (P)	9/100G
9831	ST. AGUR WEDGES	7/4.5 OZ
10651	ST. ANDRE MINI	6/7 oz
19871	TOUR DE MARZE BRIE 12/7OZ	12/7 oz

**1101**



**38090**



**0914**



**19852**



**10668**



	<b>FRANCE: ISIGNY CHEESE</b>	
20512	CREME D'ISIGNY AOP 6/200G	6/200G
20500	ISIGNY BRIE (BOAT)	12/350G
13376	ISIGNY BRIE 12/350G (AIR)	12/350G
21923	ISIGNY CAMEMBERT 8OZ (P)	12/8 oz
20519	ISIGNY FROMAGE FRAIS BLANC	6/500G
20515	ISIGNY FROMAGE FRAIS MIRABELLE PLUM	6/5.3OZ
20517	ISIGNY FROMAGE FRAIS RASPBERRY	6/5.3OZ
20518	ISIGNY FROMAGE FRAIS STRAWBERRY	6/5.3OZ
13369	ISIGNY NORMANDIE FONDUE 6/500G	6/500G
0812	ISIGNY PONT L'EVEQUE	6/8.8oz
13372	ISIGNY PRE-CUT MIMOLETTE 6 MONTH	12/210G
0956	ISIGNY WHIPPED CREAM (CHANTILLY)	12/7 OZ
	<b>FRANCE: ISIGNY BUTTER</b>	
6522	FABRIQUE DELICE & ISIGNY BLACK TRUFFLE BUTTER	6/2OZ
6521	FABRIQUE DELICE & ISIGNY GARLIC & HERB BUTTER MEDA	6/2OZ
6520	FABRIQUE DELICE & ISIGNY LEMON PEPPERCORN BUTTER	6/2OZ
0942	ISIGNY BUTTER ROLLS UNSALTED	20/250g
10942	ISIGNY SPRING BUTTER SEA SALT	20/250G
10953	ISIGNY SALTED BUTTER AOP FOIL CUPS	60/10G
10941	ISIGNY UNSALTED BUTTER AOC	10/2.2#
BE102	ISIGNY BUTTER 125G	20/125 GR
10947	ISIGNY BUTTER CHURNED OVAL SALTED 2	20/250G
10946	ISIGNY BUTTER OVALS SWEET 20/250G	20/250G
0947	ISIGNY BUTTER BASKET UNSALTED	6/250g
10956	ISIGNY ORGANIC BUTTER UNSALTED 200G	10/200G
10957	ISIGNY BUTTER BARATTE ROCK SALT	10/250G

**38409**



**0947**



**10942**



**10125**



**10956**



	<b>IMPORTED CHEESES: FRANCE RODOLPHE LE MEUNIER Preorder</b>	
20395	RODOLPHE LE MEUNIER CAMEMBERT	12/250G
20302	RODOLPHE LE MEUNIER CAMEMBERT AU CALVADOS	8/250G
20394	RODOLPHE LE MEUNIER COURONNE (CROWN)	6/200G
20392	RODOLPHE LE MEUNIER CREMEUX CITEAUX TRUFFLE	6/200G
20390	RODOLPHE LE MEUNIER CREMEUX DES CITEAUX	6/200G
20379	RODOLPHE LE MEUNIER PETIT LAVORT BREBIS	6/800G
20301	RODOLPHE LE MEUNIER PETIT THEODORE BURGEON DE	6/100G
20293	RODOLPHE LE MEUNIER PYRAMIDE DE FONTENAY	4/210G
20292	RODOLPHE LE MEUNIER ROULEAU FUME 6/180G	6/180G
20355	RODOLPHE LE MEUNIER ROULEAU POIVRE BLANC (P	6/180G
	<b>IMPORTED CHEESES: FRANCE RODOLPHE LE MEUNIER BUTTER</b>	
20381	RODOLPHE LE MEUNIER BEURRE DOUX (UNSALTED)	12/250G
20382	RODOLPHE LE MEUNIER BEURRE SEL (SALTED)	12/250G
20358	RODOLPHE LE MEUNIER BEURRE SEL (SALTED) BOAT	12/250G
20403	RODOLPHE LE MEUNIER BEURRE ESPL PEPPER 125 (P)	8/125G
20402	RODOLPHE LE MEUNIER BEURRE ETHIOP LONG PEPPER 125G (P)	8/125G
20401	RODOLPHE LE MEUNIER BEURRE MADAG WILD PEPPER 125 (P)	8/125G
20405	RODOLPHE LE MEUNIER BEURRE PASSN BERRY (P)	8/125G
20404	RODOLPHE LE MEUNIER BEURRE VIKING SALT (P)	8/125G
20400	RODOLPHE LE MEUNIER BEURRE SEAWEED BUTTER 125G (P)	8/125G
	<b>FRANCE:TREMBLAYE--PRE-ORDER RECOMMENDED</b>	
37220	TREMBLAYE ORGANIC CAMEMBERT FERMIER- BOAT	12/250G
37213	TREMBLAYE ORGANIC ST FOIN SAGE	6/300G
37223	TREMBLAYE ORGANIC CAMEMBERT FERMIER 250G P	12/250G
37217	TREMBLAYE ORGANIC CHEVREDOU 9/120G	9/120G
37203	TREMBLAYE ORGANIC ST FOIN 300G P	6/300G
37204	TREMBLAYE ORGANIC SAINT JACQUES 9/220G	9/220G (P)
37250	TREMBLAYE ORGANIC LE JOUVENCEAU GOAT 8/200G	8/200G

**10942**



**13372**



**78775**



	<b>IMPORTED CHEESES: FRANCE PRE-ORDER</b>	
17109	AMI DU CHAMBERTIN 6/250G (P)	6/250G
37163	BESACE CHEVRE AFFINE 6/120G	6/120G
37168	BESACE TRUFFE 6/60G	6/60G
11250	BRILLAT MINI FROMI TRUFFES USA 110G	6/110G
21643	BRILLAT SAVARIN BABY 100G (P)	9/100G
13927	CAMEMBERT CALVADOS GRAINDORGE 150GF	6/150G
10756	CAMEMBERT MARIE HAREL 12/250G	12/250G
10970	CHABERT CHABLOCHON 6/200G	6/200gr
10971	CHABERT FLOCON DE SAVOIE 12/120G	12/120g
10977	CHABERT VACHERIN DE SAVOIE 8/330G-P	8/330G (P)
1086	CHAOURCE AOC ROUZ SMALL USA 50%	6/250g
22103	CHAOURCE, LINCET 6/9OZ P	6/9OZ
22823	DELICE DE POMMARD HESS 6/7OZ (P)	6/7OZ
23043	EPOISSES CHABLIS GERMAIN 6/200G	6/200G
23048	EPOISSES LINCET 6/250G	6/250G
23393	FIN BRIARD BLK TRFLES,ROUZAIRE 11OZ	4/11OZ
1358	FIN BRIARD ROUZ. GD MARN. (P)	4/310 G
1155	FOUGERUS PASTEURISE (P)	4/700g
1154	FOUGERUS ROUZ MINI USA (P)	8/250g
11227	FROMAGER PETIT DAFFINOIS TRUFFES -P	8/240G
11200	FROMAGER MINI 8/100G (P)	8/100G
9503	FROMAGER D'AFF BREBICET 8/119G (P)	8/119G
11204	FROMAGER DAFFINOIS PETIT 8/5.29OZ-P	8/5.29OZ
23703	GARMY GAPERON 6/13OZ P	6/13OZ
13929	GRAINDORGE CAMEMBERT CALVADOS 250G	6/250G
13923	GRAINDORGE PONT LEVEQUE 6/7OZ	6/7OZ
10850	GRAND MOGOL ROUZ WOOD BOX 5/200G	5/200G
10837	GRES SANGLE 8/150G	8/150G
12185	GRES DE VOSGES TRUFFLES 6/125G	6/125G
12184	GRES DES VOSGES 8/125G P	8/125G
12188	GROS GRES DES VOSGES 1/1.2KG	1/1.2KG
1158	LE CALVADOS GRAINDORGE 40% (P)	6/250g
10136	LINCET ROND DU VIGNES 9/70G	9/70G

**10971**



**1358**



**17109**



**20394**



**37223**







Actual pieces of black truffles  
for an intense truffle kick taste

# Truffles

■ ■ Made in France

1120



- 1120 Fromager D`Affinois Plain Brie - 2/4.4lb
- 11205 Fromager D' Affinois Truffle - 2/2k

The very buttery Saint Angel triple cream cheese  
in original square shape



0659 Saint Angel Triple Creme 2/1.7lb

■ ■ Made in France



9503



1162	LIVAROT GRAIND ORD.	6/250g
10760	MARIE HAREL PONT L'EVEQUE 6/220G	6/220G
11251	MINI BRILLAT SAVARIN W/ CRANBERRY	6/3.9 OZ
11253	MINI BRILLAT SAVARIN W/ PAPAYA	6/3.9 OZ
11257	MINI DELICE D ARGENTAL 6/100G	6/100G
11254	MINI DELICE HERBES	6/3.9 oz
25073	MUNSTER GEROME 10/125G (P)	12/125G
25084	MUNSTER, COUPE, HAXAIRE 4/800G (P)	4/800G
25053	MUNSTER, GEROME MINI 12/7OZ	12/7OZ
35163	PERAIL BREBIS PAPILLON 8/150G (P)	8/150G
21648	PETIT BRILLAT SAVARIN W/ CRANBERRY	6/200 G
10835	PETIT DELICE CREMIERS TRUFFLES 6/20	6/200G
11265	PETIT DELICE DES CREMIERS 200G	6/200G
12193	PETIT GRES CHAMPENOIS 150G (P)	5/150G
1177	PONT EVEQUE GRAIND ORD. DEMI	6/180g
13933	PONT LEVEQUE, GRAINDORGE 6/12OZ	6/12OZ
10715	PREFERE DE MONTAGNES LA TRADTION	6/500G
23943	ROUZAIRE GRATTE PAILLE MINI, ROUZRE 8/6OZ P	8/6OZ
1122	ROUZAIRE GRATTE PAILLE PASTEURISE (P)	8/350g
1085	ROUZAIRE JEAN GROGNE PASTEURISE (P)	1/3#
1105	ROUZAIRE FIN BRIARD ROUZ. TRUFFLES USA 50%P	4/310G
21501	ROUZAIRE FIN BRIARD MOUSTARDE (p)	4/310G
23383	ROUZAIRE BRIARD GRAND MARNIER, 11OZP	4/11OZ
17923	RONDIN PAPILLON 2/900G AIR (P)	2/900G
1144	SOUMAINTRAIN BERTHAUT USA	6/400g
27815	SOUMAINTRAIN LINCET 6/250G P	6/250G
19806	ST. MARTIN IN CROCKS 6/125G (P)	6/125G
10752	PETIT EPICEA XD 6/250G	6/250G
10861	XAVIER DAVID CREMEUX DES CIMES 6/500G	6/500G
10753	XAVIER DAVID ROND CHEVRE 6/150G	6/150G
	<b>FRANCE: SPECIALTY</b>	
9052	DELOUIS FRESH BEARNAISE SAUCE	12/3.9 OZ
9051	DELOUIS FRESH GARLIC MAYONNAISE	12/6.7 OZ
9053	DELOUIS FRESH HOLLANDAISE SAUCE	12/3.9 OZ
9050	DELOUIS FRESH MAYONNAISE	12/6.7 OZ

**1162**



**35163**



**19806**



<b>FRENCH BUTTERS: ECHIRE (PREORDER ONLY)</b>		
20448	ECHIRE BUTTER UNSALTED 100/30G (W)	100/30G
20443	ECHIRE BEURRE UNSALTED 20/8OZ (P)	20/8OZ
20440	ECHIRE BUTTER BASKET 1/5K (P)	1/5K
20453	ECHIRE BUTTER SALTED BARS 20/250G P	20/250G
<b>FRENCH BUTTERS: PRESIDENT</b>		
0943	PRESIDENT SALTED BUTTER	20/200G
0945	PRESIDENT UNSALTED BUTTER	20/200gm
20324	PRESIDENT BUTTER UNSLTD OVAL TUB 8/	8/500G
<b>IMPORTED CHEESES: GERMANY</b>		
1425	LIMBURGER	6/6.35 oz
<b>IMPORTED CHEESES: GREECE</b>		
4160	MT VIKOS FETA BARREL AGED	6/6 oz
42941	MT VIKOS FETA TRADITIONAL PORTION	12/7 oz
4170	MT.VIKOS ORGANIC FETA	14/6 oz
41700	PATROS FETA COWS MILK TIN 6/1K	6/1K
<b>IMPORTED CHEESES: ESTI</b>		
3639	ESTI FETA BLOCK IN BRINE	8/14 oz
3638	ESTI FETA IN VACUUM	15/7 oz
3418	ESTI SHEEP FETA CUBES (P)	8/14 oz
<b>IMPORTED CHEESES: GREECE - KOURELLAS DAIRY</b>		
65690	KOURELLAS FETA ORGANIC PDO 10/150G	10/150G
65693	KOURELLAS ORGANIC BARREL AGED FETA	10/150G
65694	KOURELLAS ORGANIC FETA CUBES 6/5.3oz	6/5.3 oz
<b>IMPORTED CHEESES: HOLLAND</b>		
5260	BEEEMSTER AGED PRECUT	12/5.3 oz
5261	BEEEMSTER GOAT PRECUT	12/5.3 oz
5262	BEEEMSTER VLASKAAS PRECUT	12/5.3 oz
1748	OLD AMSTERDAM CHEESE SNACKS	14/3.17 oz
1551	REMBRANDT EXACT WEIGHT WEDGES	15/6.35 oz
5012	KROON SMOKED GOUDA EXACT WEIGHT 8OZ	12/8 oz
5035	WB PRE-CUT DUTCH GOUDA	1/10#



<b>IMPORTED CHEESES: IRELAND PRE-ORDER</b>		
45522	DUNBARRA GARLIC-HERB 12/7OZ (P)	6/7OZ
45378	COOLEENEY DARU CRANBERRY 6/12OZ (P)	6/12OZ
45375	COOLEENEY DARU CHILLI & PEPPER (P)	6/300G
45376	COOLEENEY DARU GARLIC & HERB (P)	6/300G
8886	TIPPERY IRISH CHEDDAR W/WHISKEY (P)	12/5.1 OZ
45377	COOLEENEY SMOKEY TIPPERARY ORCHARD	6/300G
45528	COOLEENEY FRMHSE SFT RIPENED 7OZ	6/7 oz
45555	COOLEENEY GORTNAMONA GOAT 6/7OZ	6/7 oz
45525	COOLEENEY RUBY BEER WASHED 4/7 OZ	4/7 oz
45562	COOLEENEY TIPPERARY BRIE 6/6OZ	6/6 oz
45563	COOLEENEY TIPPERARY BRIE W/ CRANBERRY	6/150G
45519	DUNBARRA PEPPER 6/7 OZ	6/7 oz
45532	DURRUS OG 6/225GM	6/225G
45322	GUBBEEN MINI 12/12OZ	12/12OZ
45351	MILEENS WASHED RIND 4/7 OZ	4/7 oz
<b>IMPORTED CHEESES: IRELAND</b>		
1701	BLARNEY WEDGES	24/7 oz
1737	DUBLINER WEDGES - X	12/6 oz - X
1703	IRISH DUBLINER WEDGES	24/7 oz
1709	IRISH SWISS WEDGES	24/7 oz
1702	IRISH VINTAGE CHEDDAR WEDGES	24/7 oz
1713	KERRYGOLD IRISH BUTTER PATS W/ HERB	40/3.5 oz
1712	KERRYGOLD IRISH BUTTER UNSALTED	20/8 oz
1711	KERRYGOLD IRISH SALTED BUTTER	20/8 oz
1720	KERRYGOLD UNSALTED BUTTER STICKS	20/8OZ
1717	KERRYGOLD SALTED BUTTER STICKS	20/8 OZ
1733	KERRYGOLD RESERVE 2 YR CHEDDAR 7OZ	24/7 oz
1718	WEXFORD IRISH CHEDDAR RETAIL 12/7OZ	12/7 oz
<b>IMPORTED CHEESES: ITALY</b>		
1876	AGRIFORM PARMIGIANO REGGIANO CHISEL	12/5.3oz
2004	AURICCHIO DOLCE GORGONZOLA PREPACK	10/7OZ
1999	AURICCHIO ESCLUSIVA TALEGGIO MINI	10/7 oz
2030	LOCATELLI ROMANO EXACT WEIGHT WEDGE	12/7 oz
99406	PARM REGGIANO DOP ORGANIC WEDGES	20/250gr
1945	ROMANO, LOCATELLI GRATED CUPS	12/8 OZ

**2004**



**12**

**1999**

<b>IMPORTED CHEESES: ITALY:CENTRAL</b>		
89799	SHEEP RICOTTA 12/8	12/8OZ (P)
89797	SHEEP RICOTTA 6/1#	6/1#
5001	MOLITERNO W/ WINE EXACT WEIGHT	12/5oz
5001	MOLITERNO W/ TRUFFLE E/W WEDGES	12/5 OZ
<b>IMPORTED CHEESES: ITALY: CORA PREORDER ONLY</b>		
52504	CORA ROBIOLINA INCAVOLATA CABBAGE(p)	9/200G
50112	CORA MONTEBORE 4/800G (p)	4/800G
50110	CORA APE REGINA QUEEN BEE 9/120G (p)	9/120G
47220	CORA LA ROSSA CHERRY LEAVES (p)	3/120G
50118	CORA BLUE DEL RE 4/450G (p)	4/450G
47283	CORA CIABOT 4/8OZ (p)	4/8 oz
47282	CORA ROBIOLA D'ALBA TARTUFO 5/250G	5/250G
<b>IMPORTED CHEESES:POLENGHI MASCARPONE</b>		
1895	MASCARPONE POLENGHI 12/250G	12/250G
1912	MASCARPONE, POLENGHI 6/500G	6/500gm
<b>IMPORTED CHEESES: ITALIAN BUTTER</b>		
1940	PARMESAN REGGIANO BUTTER	10/8OZ
1947	DELITIA BUFFALO MILK BUTTER	10/8 OZ
<b>IMPORTED CHEESES: ITALY - GUFFANTI</b>		
47083	GUFFANTI BRESCIANELLA AQUAVITE 10OZ	4/10OZ
47100	GUFFANTI BRESCIANELLA STAGIONATA	4/1.75#
47329	GUFFANTI CAMEMBERT DI BUFALA	4/270G
51540	GUFFANTI FURMAGETTA FRESCA 6/400G	6/400G
50640	GUFFANTI MOZZARELLA DI BUFALA CUPS	6/8.5 OZ
52008	GUFFANTI RICOTTA WITH LEMON 18/200G	18/200G
89845	GUFFANTI ROBIOLA 2 LATTI MINI 110G	18/110 G
47106	GUFFANTI ROBIOLA 2 LATTI 12/8.5OZ	6/8.5 OZ
52723	GUFFANTI ROBIOLA D MURAZZANO DOP 5/10OZ	5/10OZ
52608	GUFFANTI ROBIOLA DI ROCC PURA CAPRA	6/7OZ
52468	GUFFANTI ROBIOLA GOAT/COW 12/8OZ	12/8 OZ
52673	GUFFANTI ROBIOLA NOSTRANA 12/5.5OZ	12/5.5OZ
52683	GUFFANTI ROBIOLA ORO 12/10OZ	12/10 OZ
50600	GUFFANTI ROBIOLA ROCCAVERAN FRESCA 6/8OZ	6/8 OZ



89799



1947



47329



51540



50640



89845



52673



1895



1912



47100



50110

	<b>IMPORTED CHEESES: ITALY:CASEIICIO Di ROCCAVERANO PREORDER ONLY</b>	
55481	CAEIFICIO DI ROC CAPRI TRE LATTI FRESCO	6/250G
55482	CAEIFICIO DI ROCCAVERANO CAPRICCIO CAPRA FRSCO	9/250G
55483	CAEIFICIO DI ROCC CAPRICCIO CAPRA STAGIONATA	6/250G
55484	CAEIFICIO DI ROCCAVERANO DOLCEZZA DI LANGA	9/250G
55485	CAEIFICIO DI ROC FORMAGETTA DELLA ROCCA	6/330G
55488	CAEIFICIO DI ROCCAVERANO PREGIATA DI CAPRA	18/100G
55489	CAEIFICIO DI ROC PREGIATA DI CAPRA TONGA	12/300G
55487	CAEIFICIO DI ROCC REGINELLA DELLA LANGA PICOLA	18/120G
55486	CAEIFICIO DI ROC REGINELLA DELLA LANGA TONDA	8/300G
55480	CAEIFICIO DI ROCCAVERANO RICOTTA MISTA	6/360G
55491	CAEIFICIO DI ROCCAVERANO ROBIOLA DELLA ROCCA	6/330G
55493	CAEIFICIO DI ROCC ROBIOLA PURACAPRA STAGIONATA	6/330G
55492	CAEIFICIO DI ROC ROBIOLA PURACAPRA-FRESCA	6/330G
	<b>IMPORTED CHEESES: ITALY-ALTA LANGA (PREORDER RECOMMENDED)</b>	
IT1706	LANGA BOCCONCINI GOAT	18/70G
IT1740	LANGA BONRUS MIXED MILK	7/210GR
IT1731	LANGA BRUNET (CUPS)	6/250GR
IT1702	LANGA CAMEMBERT 3 LATTI	6/8 OZ
61702	LANGA CANET 8/4 OZ (P)	8/4 OZ
IT1798	LANGA CARBONCINO	8/8OZ
IT1770B	LANGA CRAVANZINA	10/8.8 OZ
61704	LANGA CRAVET	15/90G
IT1776	LANGA FIOR DI LANGA	6/10OZ
IT1721	LANGA LA TUR (CUPS)	6/200GR
IT1761	LANGA LANGHERINO	18/70 GM
IT1736	LANGA NOCCIOLO	8/3.5OZ
61701	LANGA ROBIOLA BOSINA 12/300GM	12/300GM
IT1711	LANGA ROCHETTA (CUPS)	6/250GR
IT1791	LANGA ROSSO DO LANGA	8/8.8OZ
61713	LANGA TRUFFOLINA 6/220G (P)	6/220G

**47100**



**IT1736**



**IT1721**

	<b>IMPORTED CHEESES: ITALY-CREMOSO PREORDER ONLY</b>	
47337	CREMOSA AL TARTUFO 6/125G (P)	6/125G (P)
	<b>IMPORTED CHEESES: ITALY--COOPERLAT</b>	
54940	COOPERLAT TUFINO TARTUFO 12/250G	12/250G
	<b>IMPORTED CHEESES: NEW ZEALAND</b>	
3521	ANCHOR GRASS FED SHARP WHITE CHEDDAR	12/7 oz
3522	ANCHOR GRASS FED WHITE VINTAGE CHEDDAR	12/7 oz
3523	ANCHOR NEW ZEALAND ORGANIC WHITE CHEDDAR	12/7 oz
	<b>IMPORTED CHEESES: NORWAY</b>	
2031	EKTE GJETOST SMALL 12/8.8oz	12/8.8 oz
2028	GJETOST 12/8oz	12/8 oz
5063	JARLSBERG CHEESE SNACKS	12/6 oz
5062	JARLSBERG EXACT WEIGHT WEDGES	12/8 oz
5059	JARLSBERG LITE EXACT WEIGHT WEDGES	12/8 oz
	<b>IMPORTED CHEESES: PORTUGAL PRE-ORDER</b>	
62821	TERRINCHO VELHO PIMENTON - RUBBED	4/600G
62826	ZIMBRO - CASA LUSA	4/1K
	<b>IMPORTED CHEESES: SPAIN</b>	
5014	DRUNKEN GOAT EXACT WEIGHT WEDGES	12/6 oz
4350	GARCIA BAQUERO TAPAS	14/5.2 oz
2598	KOSHER MANCHEGO WEDGES 12/200G	12/200G
SP067	MANCHEGO ARTEQUESO WEDGES	12/8 oz
62210	PLAZA MAYOR MANCHEGO 6 MO 12/200G	12/200G
5185	PLAZA MAYOR MANCHEGO EXACT WEIGHT	12/8OZ
62211	PLAZA MAYOR SHEEP W/ TRUFFLE 12/200	12/200G
62216	PLAZA MAYOR TAPAS TRAY 12/150G	12/150G
62243	SHEEP CHEESE W/ TRUFFLE WEDGE	16/200G
5019	SMOKIN' GOAT EXACT WEIGHT WEDGES	12/6 oz
2218	SPANISH GOAT LOG HERB	10/5 oz
2219	SPANISH GOAT LOG PLAIN	10/5 oz
2471	MITICA WOOLY WOOLY SHEEP LOG	10/5OZ
	<b>IMPORTED CHEESES: SPAIN PARRA FAMILY</b>	
62296	PARRA FAMILY AJO NEGRO (BLACK) JARS	10/60G



16



2471



54940



<b>IMPORTED CHEESES: SPAIN PRE-ORDER</b>		
61500	FINCA MINI LA RETORTA 6/140GM (P)	6/140G
62685	PETIT NEVAT 6/300G (P)	6/300G
62383	ODRE 6/260G (P)	6/260G
62317	REY SILO ROJO 6/250G (P)	250G (P)
62585	TORTA DEL CASAR TIANA 6/500G	6/500G
62379	TORTA PICO MELERO ARDAI 6/300G (P)	6/300G
62680	TORTITAS DE LOS BARROS 6/700G CANUT (P)	6/700G
<b>IMPORTED CHEESES: SWITZERLAND</b>		
5094	MIFROMA CAVE AGED GRUYERE PARCHMENT	8/7 oz
5090	MIFROMA EMMENTAL PARCHMENT	8/7 oz
5092	MIFROMA GRUYERE PARCHMENT	8/7 oz
50815	MIFROMA GRILLING RACLETTE KITS	9/7OZ
5088	MIFROMA SHREDDED GRUYERE CUPS	9/3.5 OZ
50811	MIFROMA SLICED TRUFFLE RACLETTE	8/5.3 OZ
5081	MIFROMA SLICED RACLETTE	12/7 oz
5086	MIFROMA FONDUE EXPRESS	12/5.3oz
5082	MIFROMA FONDUE BOX 10/14OZ	10/14 oz
5080	MIFROMA TETE DE MOINE ROSETTES	7/3.35OZ
50814	MIFROMA TRUFFLE FONDUE 10/10.58OZ	10/10.58OZ
5085	MIFROMA CHOCOLATE FONDUE	12/7 oz
5069	WB PRE-CUT SWITZERLAND GRUYERE	1/10#
<b>IMPORTED CHEESES: SWISS CAROLINE HOSTETLER COLLECTION</b>		
64912	BERNER MUNTSCHLI THE KISS 6/4.5OZ P	6/5OZ
64067	BLUTENKASE SWISS FLOWER CHEESE	8/170G
64148	FONDUE QUALITY CHEESE 1/600G	1/600G
64758	SBRINZ ROLLS 8/150G	8/150G
64214	TETE DE MOINE ROSES 8/150G	8/150G
<b>IMPORTED CHEESES: SWITZERLAND: ROLF BEELER</b>		
64206	BEELER BIERDECKEL WHEAT BEER WASHED 1/1#	1/1#
64147	BEELER FONDUE 1/600G	1/600G
64212	BEELER STANSER FLADA COWS PAT 1/11OZ	1/11 OZ

**50811**



**62826**



**64067**



<b>IMPORTED CHEESES: SWITZERLAND: MOSER</b>		
64205	BURE WEICHASLI CAMEMBERT BUTTON 1OZ	8/1 OZ
64183	CHARMANT 6/4OZ	6/4OZ
64202	DOTZIGER CHARDONNAY 4oz	6/4 OZ
64177	MOSER TRUFFLE 6/150G (P)	6/150G (P)
64209	RIESLING SYLVANER CHASLI 4oz	6/4 OZ
64106	MOSER SCREAMER TRIPLE 6/150G (P)	6/150GR
64184	MOSER MINI SCREAMER 6/2.1 OZ (p)	6/2.1 OZ(P)
64223	MOSER MINI TRUFFLE BUTTON 6/1.75 P	6/1.75 OZ
64177	MOSER MINI TRUFFLE BUTTON 6/1.75 OZ	6/1.75 OZ
64102	MOSER MOSTARDO 6/1.8 OZ	6/1.8 OZ

**64205**



**64209**



**64183**

**64202**



**64177**



**64106**



**64184**



**64223**

**64102**



<b>IMPORTED CHEESES: SWITZERLAND: WILLI SCHMIDT</b>		
64313	BERGFICHTE 1/2	8/2#
64315	BERGFICHTE SMALL 1/400G	1/400G
64635	HOELZERNE GEISS WOODEN GOAT	1/1#
64154	TUMA KASE 8OZ (p)	10/8OZ
<b>IMPORTED CHEESES: UK</b>		
5041	BARBERS 1833 VINTAGE RESERVE PRECUT	12/6.7 oz
10395	BELTON FARMS RED FOX 8/7OZ	8/7 oz
10396	BELTON FARMS WHITE FOX 8/7OZ	8/7 oz
10455	CC DEVON CREAM	12/6 oz
0412	CHEDDAR, COLLIERS	12/7 oz
10450	COOMBE CASTLE DEVON CLOTTED CRM	12/6 oz
7458	IL TRUFFELINO WEDGES	12/5 oz
6054	SNOWDONIA BLACK BOMBER CHEDDAR TRUCKLE	6/7 oz
6050	SNOWDONIA RED STORM LEICESTER CHEDDAR	6/7 oz
6051	SNOWDONIA RUBY MIST PORT/ BRANDY CHEDDAR	6/7 oz
7452	SOMERDALE WENSLEYDALE W/CRAN WEDGES	12/5 OZ
0496	STILTON WEDGE, T&T	12/5 oz
0410	TICKLER XTRA MATURE CHEDDAR 7OZ	14/7 oz
<b>IMPORTED CHEESES: FINE CHEESE COMPANY</b>		
<b>PREORDER ONLY</b>		
10400	RENEGADE MONK 6/220G (P)	6/220G
10427	PERL WEN 5/250G (P)	5/250G (P)
10399	REBEL NUN 6/220G (P)	6/220G (P)
10495	FCC WAX CHEDDAR 200G	12/200G
10522	MINI FARMHOUSE CHEDDARS WAXED 3.5OZ	24/3.5OZ-P
10525	DOL WEN SHEEP CAWS CENARTH 7OZ (P)	5/7OZ
10480	STILTON CROCKS 12/100G	12/100G
<b>IMPORTED BUTTER: UK</b>		
0400	COOMBE CASTLE DEVON BUTTER LIGHTLY SLT	12/8 oz
10402	DELAMERE GOAT BUTTER	10/8.8 oz
0439	SOMERDALE ENGLISH SALTED BUTTER	20/8 oz

**5041**



**0412**



**6051**



**7458**



	<b>DOMESTIC CHEESES: ALOUETTE</b>	
0642	ALOUETTE BABY BRIE	6/13.2 oz
2791	ALOUETTE CRÈME DE BRIE HERB	6/5 oz
2534	ALOUETTE CREME FRAICHE	6/7 oz
2789	ALOUETTE CRUMBLLED BLUE CHEESE	12/4 oz
2788	ALOUETTE CRUMBLLED FETA CHEESE	12/4 oz
2787	ALOUETTE CRUMBLLED GOAT CHEESE	12/3.5 oz
2786	ALOUETTE CRUMBLLED GORGONZOLA CHEESE	12/4 oz
2535	ALOUETTE GARLIC & HERB SPREAD	12/6.5 oz
2521	ALOUETTE SPINACH & ARTICHOKE	6/6.5 oz
2785	CREME DE BRIE PLAIN	6/5 oz
	<b>DOMESTIC CHEESES: APPLE SMOKED</b>	
2566	APPLE SMOKED CHEDDAR	14/8 oz
2562	APPLE SMOKED GOUDA	14/8 oz
2569	APPLE SMOKED GRUYERE	14/8 oz
2567	APPLE SMOKED MOZZARELLA	14/8 oz
2568	APPLE SMOKED PROVOLONE	14/8 oz
2564	APPLE SMOKED SWISS	14/8 oz
	<b>DOMESTIC CHEESES: ARETHUSA</b>	
65935	ARETHUSA FARM BELLA BANTAM 12/5.5OZ (P)	12/5.5OZ
65944	ARETHUSA FARM BELLA BANTAM 2/8# (P)	2/8# (P)
65942	ARETHUSA FARM CAMEMBERT 6/8OZ (P)	6/8 OZ (P)
65936	ARETHUSA FARM CRYBABY 12/5.5OZ (P)	12/5.5OZ
65934	ARETHUSA FARM DAIRY CULTURED BUTTER	12/8OZ
65941	ARETHUSA FARM DIVA 6/8OZ (P)	6/8 OZ (P)
65937	ARETHUSA FARM EUROPA 12/5.5OZ (P)	12/5.5OZ
65943	ARETHUSA FARM GRATITUDE 6/8OZ (P)	6/8 OZ (P)
65939	ARETHUSA FARM TAPPING REEVE 12/5.5OZ (P)	12/5.5OZ
	<b>DOMESTIC CHEESES: BABYBEL</b>	
2997	BABYBEL LIGHT MINI NETS	12/4.5 oz
2989	BABYBEL MINI (RED) NETS	12/4.5 oz
2976	BABYBEL PLANT BASED 8/4.23OZ	8/4.23 OZ
3089	LAUGHING COW ORIG CHEESE WW BREADST	4/3.53 OZ
2995	LAUGHING COW WEDGES	12/6 oz
3090	LAUGHING COW WHT CHED PRETZEL BREAD	4/3.53 OZ

2787



2976



2997



20

2888



3090

<b>DOMESTIC CHEESES: BEECHERS</b>		
65705	BEECHERS FLAGSHIP CHEESE STICK 24PK	6/24/.75OZ
8843	BEECHERS CHEESESTICKS 16PK .75OZ	16/8/.75OZ
2879	BEECHERS PRECUT 4 YEAR FLAGSHIP	10LB R/W
2883	BEECHERS PRECUT DULCET	2/5#
2884	BEECHERS PRECUT FLAGSHIP	2/5#
2885	BEECHERS PRECUT MARCO POLO	2/5#
2886	BEECHERS PRECUT NEW WOMAN	2/5#
2888	BEECHERS SMOKED FLAGSHIP PRECUT	1/10#
<b>DOMESTIC CHEESES: BEEHIVE</b>		
77131	BEEHIVE BARELY BUZZED 10/4 OZ	10/4 oz
77127	BEEHIVE APPLE WALNUT SMAOKED 10/4OZ	10/4OZ
77134	BEEHIVE BIG JOHN'S CAJUN 10/4 OZ	10/4 oz
77138	BEEHIVE HATCH CHILE CHEDDAR 10/4OZ	10/4 oz
77111	BEEHIVE POUR ME A SLICE 10/4OZ	10/4OZ
77116	BEEHIVE PROMONTORY CHEDDAR 10/4 OZ	10/4 oz
77148	BEEHIVE QUEENBEE PORCINI CHEDDAR 10	10/4 OZ
77133	BEEHIVE SEAHIVE 10/4 OZ	10/4 oz
77136	BEEHIVE SQUEAKY BEE CAJUN CURDS 4OZ	10/4 oz
77135	BEEHIVE SQUEAKY BEE CURDS 10/4 OZ	10/4 oz
77137	BEEHIVE TEAHIVE 10/4 OZ	10/4 oz
<b>DOMESTIC CHEESES: BELFIORE</b>		
<b>WEST STOCK ONLY</b>		
89817	BELFIORE BURRATA DI BUFALA 6/8OZ	6/8OZ
US1319	BELFIORE FARMERS RTL CHEESE	6/16 OZ
89927	BELFIORE FETA IN BRINE BULK	2/4 LB
89924	BELFIORE MOZZARELLA TRAD. 12/12OZ	12/12OZ
US1331	BELFIORE ORG FIOR DI LATTE	12/6 OZ
US1327	BELFIORE ORG RTL CILIEGINE MOZZ	12/6 OZ
US1330	BELFIORE ORG RTL FARMERS	6/9 OZ
US1328	BELFIORE ORG RTL FETA IN BRINE	12/9 OZ
US1329	BELFIORE ORG RTL MOZZ PEARLS	12/6 OZ
89926	BELFIORE OVALINE BULK	2/3 LB
89854	BELFIORE RETAIL BURRATA 6/8OZ	6/8OZ
US1304	BELFIORE RTL CILIEGINE (BOCCONCINI)	12/8 OZ
US1318	BELFIORE RTL FETA	12/12 OZ
US1316	BELFIORE RTL FIOR DI LATTE	12/8 OZ
US1311	BELFIORE RTL RICOTTA	12/1 LB
US1325	BELFIORE SMOKED MOZZARELLA	12/8 OZ

**77137**



**65705**



**77111**



**2879**



**77131, 77133, 77135, 77137**



<b>DOMESTIC CHEESES: BEL GIOIOSO</b>		
2848	BEL GIOIOSO SNACKING MOZZARELLA	10/6 oz
2739	BEL GIOIOSO MASCARPONE	12/1#
2829	BEL GIOIOSO CAESAR SALAD BLEND	12/5 oz
2827	BEL GIOIOSO GRATED PARMESAN	12/5 oz
2828	BEL GIOIOSO GRATED ROMANO	12/5 oz
2824	BEL GIOIOSO SHAVED PARMESAN	12/5 oz
2822	BEL GIOIOSO SHREDDED ASIAGO	12/5 oz
2820	BEL GIOIOSO SHREDDED PARMESAN	12/5 oz
2821	BEL GIOIOSO SHREDDED ROMANO	12/5 oz
2865	BEL GIOIOSO EXACT WEIGHT ASIAGO	12/8 oz
2866	BEL GIOIOSO EXACT WEIGHT FONTINA	12/8 oz
2867	BEL GIOIOSO EXACT WEIGHT PARMESAN	12/8 oz
2869	BEL GIOIOSO EXACT WEIGHT SHARP PROVOLONE	12/8 oz
2818	BEL GIOIOSO MASCARPONE	12/8 oz
2841	BEL GIOIOSO MOZZARELLA BALL	12/8 oz
2737	BEL GIOIOSO WHOLE MILK RICOTTA 16OZ	6/16 oz
2835	BEL GIOIOSO BURRATA	6/8 oz
2833	BEL GIOIOSO CILIEGINE MOZZ CUPS	6/8 OZ
2839	BEL GIOIOSO TRUFFLE BURRATA	6/8 oz
2843	BEL GIOIOSO MOZZARELLA LOG SLICES	8/16 oz
2736	BEL GIOIOSO MOZZARELLA LOGS 16OZ	8/16 oz
<b>DOMESTIC CHEESES: BELLWETHER FARMS</b>		
74025	BELLWETHER SHEEP CHEESE STRAWBERRY	10/3OZ(P)
74026	BELLWETHER SHEEP CHEESE SONOMA HERB	10/3OZ(P)
74027	BELLWETHER SHEEP CHEESE ORIGINAL(P)	10/3OZ
74028	BELLWETHER SHEEP CHEESE MARMALADE-P	10/3OZ
74029	BELLWETHER SHEEP CHEESE MORROCAN(P)	10/3OZ
74084	BELLWETHER CREAM FRAICHE 5OZ	9/5 oz
74041	BELLWETHER WHL MILK RICOTTA BASKETS	6/12 oz
US1499	BELLWETHER CARMODY RETAIL	15/7 OZ
74043	BELLWETHER SHEEP YOGURT PLAIN 16OZ	6/16OZ
US1508	BELLWETHER RTL CREME FRAICHE	8/7.5 OZ
74089	BELLWETHER JERSEY WHEY RICOTTA BUL	2/3.5 LB
US1516	BELLWETHER RTL CRESCENZA	6/8 OZ

**2822**



**2818**



**2736**



**2848**



**2843**



**74025**



<b>DOMESTIC CHEESES: BLAKESVILLE CREAMERY</b>		
65960	BLAKESVILLE AFTER GLOW GOAT 9/5OZ	9/5OZ
65961	BLAKESVILLE LAKE BREEZE GOAT 9/5OZ	9/5OZ
65962	BLAKESVILLE LAKE EFFECT GOAT 9/5OZ	9/5OZ
<b>DOMESTIC CHEESES: BOURSIN</b>		
1441	BOURSIN CRANBERRY & SPICE (SEASONAL)	6/5.2 OZ(P
1000	BOURSIN HERB	12/5 oz
1001	BOURSIN PEPPER	6/5 oz
0998	BOURSIN SHALLOT & CHIVE	6/5.2 oz
<b>DOMESTIC CHEESES: CALABRO</b>		
2979	CALABRO WRAPPED MOZZARELLA PLAIN	6/1#
2998	CALABRO CILIEGINE	2/3#
2987	CALABRO MOZZARELLA PART SKIM	12/16 oz
2986	CALABRO MOZZARELLA WHOLE MILK	12/16 oz
2999	CALABRO OVOLINE	2/3#
2985	CALABRO RICOTTA FAT FREE	12/16 oz
2984	CALABRO RICOTTA PART SKIM	12/16 oz
2983	CALABRO RICOTTA WHOLE MILK	12/16oz
2955	CALABRO ROTOLINI MOZZARELLA W/ PROSCIUTTO	8/8 oz
2970	CALABRO ROTOLINI PEPPERONI	8/8 oz
<b>DOMESTIC CHEESES: CAPRIOLE</b>		
75220	CAPRIOLE O' BANON 12/6 OZ	12/6 oz
75217	CAPRIOLE TEA ROSE 12/6OZ	12/6 OZ

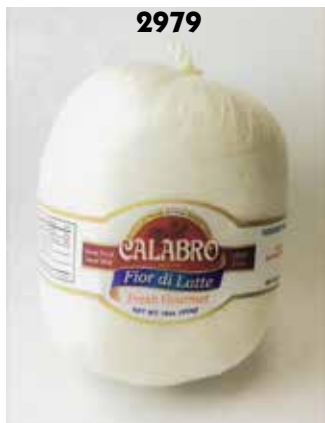
65962



2955



1441



3014



- 3014 Cabot Farmhouse Reserve Bars
- 3021 Cabot White Oak Cheddar Bars
- 3028 Cabot Alpine Cheddar Bars
- 3121 Cabot Cottage Cheese
- 3122 Cabot Cottage Cheese No Fat

**Above Group: 12/6oz**

3001 Cabot Whipped Cream **12/7oz**

- 3005 Cabot Sharp White Bar
- 3006 Cabot 50% Lite White Bar
- 3007 Cabot Seriously Sharp White Bar
- 3008 Cabot Monterey Jack Bar
- 3009 Cabot Seriously Sharp Yellow Bar
- 3016 Cabot Extra Sharp White Bar
- 3025 Cabot Sharp Red Wax
- 3030 Cabot Ps Black Wax
- 3041 Cabot New York Extra Sharp Yellow Bar
- 3059 Cabot Horseradish Bar
- 3060 Cabot Habanero Bar
- 3062 Cabot Pepper Jack Bar
- 75161 Cabot 2 Year White Cheddar Deli Bar
- 75162 Cabot 3 Year White Cheddar Deli Bar

**Above Group: 12/8oz**

- 3116 Cabot Shredded Mozzarella
- 3119 Cabot Shredded Fancy Blend
- 3120 Cabot Shredded Sharp Yellow Cheddar

**Above Group: 12/8oz**

- 3057 Cabot Butter Quarters Salted
- 3058 Cabot Butter Quarters Unsalted
- 75151 Cabot European Style Butter Seasalt
- 75152 Cabot European Style Butter Unsalted

**18/1#**  
**18/1#**  
**18/8oz**  
**18/8oz**

3367 Cabot Regular Sour Cream **6/16oz**

3032 Cabot Ps Ingots **8/1#**

75163 Cabot 5 Year White Cheddar Deli Bar **8/16oz**

**75163**



24



**3028**



**3025**



**3032**



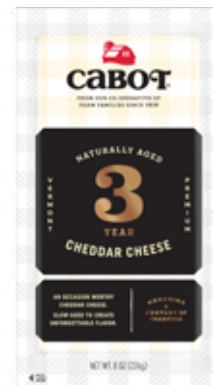
**3030**



**75161**



**75162**



**3057**



**3058**



**3116**



**3119**



**3120**





	<b>DOMESTIC CHEESES: CARR VALLEY</b>	
2914	CARR VALLEY EXACT WEIGHT BREAD CHEESE	12/6 oz
	<b>DOMESTIC CHEESES: CENTRAL COAST</b>	
8351	CENTRAL COAST EW HOLEY COW WEDGES	12/6 OZ
8352	CENTRAL COAST EW EWEREKA WEDGES	12/6 OZ
8353	CENTRAL COAST EW EWENIQUE WEDGES	12/6 OZ
8354	CENTRAL COAST EW GOAT CHEDDAR WEDGE	12/6 OZ
8355	CENTRAL COAST EW GOAT GOUDA WEDGES	12/6 OZ
	<b>DOMESTIC CHEESES: CHAVRIE</b>	
2780	CHAVRIE	6/5.3 oz
	<b>DOMESTIC CHEESES: BIG MOO</b>	
2680	BIG MOO OH SO ORIGINAL BAKED CHEESE	6/8OZ
2681	BIG MOO ROASTED GARLIC BAKED CHEESE	6/8OZ
2682	BIG MOO BAKIN' BACON BAKED CHEESE	6/8OZ
2683	BIG MOO HOPPIN' JALAPENO BAKED CHEE	6/8OZ
	<b>DOMESTIC CHEESES: COUTURIER</b>	
0715	GOAT LOGS MINI WHITE, COUTURIER	6/5.5OZ
0705	GOAT LOGS WHITE, COUTURIER	6/11oz
	<b>DOMESTIC CHEESES: CYPRESS GROVE</b>	
3173	CYPRESS GROVE PURPLE HAZE 4oz	6/4 oz
73968	CYPRESS GROVE TRUFFLE TREMOR MINI 2/1 LB	2/1#
73953	CYPRESS FOG LIGHTS 6/6OZ	6/6OZ
73952	CYPRESS HUMBOLDT FOG MINI 14OZ	4/14 oz
73744	CYPRESS LITTLE GIANT	6/4OZ
3175	CYPRESS GROVE MS. NATURAL PLN DISC	6/4 OZ
73959	CYPRESS GROVE MS. NATURAL1OZ DISKS	15/1OZ
US2995	CYPRESS PSYCHE DILLIC 6/4 OZ	6/4 OZ
73967	CYPRESS GROVE SGT. PEPPER	6/4 OZ
73951	CYPRESS GROVE MEYER LEMON&HONEY 4OZ	12/4OZ
73962	CYPRESS GROVE HATCH CHILE DISK 12/4	12/4 OZ
US2993	CYPRESS HERBS DE HUMBOLDT 6/4 OZ	6/4 OZ
	<b>DOMESTIC CHEESES: DI STEFANO WEST ONLY</b>	
IT1850B	BURRATA RTL DI STEFANO	6/8 OZ
63408	DI STEFANO BURRATA ALL PANNA 4OZ	12/4OZ
63421	DI STEFANO MOZZ RTL 8 OZ BALLS PRE ORDER ONLY	6/8 OZ
63404	DI STEFANO BOCCONCINI 2 OZ	6/8 OZ

0715

73968



2780



3173



3173

	<b>DOMESTIC CHEESES: DOFINO</b>	
5172	CASTELLO EDAM ROUNDS	12/7 oz
5170	CASTELLO GOUDA ROUND	12/7 oz
5171	CASTELLO SMOKED GOUDA ROUND	12/7 oz
	<b>DOMESTIC CHEESES: FACEROCK CREAMERY</b>	
5245	FACE 2 FACE RETAIL MIXED MILK CHEDD	12/6OZ
5239	FACE ROCK RETAIL SMOKED CHEDDAR (P)	12/6OZ
5246	IN YOUR FACE RETAIL JALAPENO&HABANE	12/6OZ
5247	VAMPIRE SLAYER RETAIL GARLIC CHEDDA	12/6OZ
5248	FACE ROCK RETAIL AGED12 MONTH CHEDD	12/6OZ
5249	FACE ROCK RETAIL PEPPERCORN HARVEST	12/6OZ
	<b>DOMESTIC CHEESES: FISCALINI WEST ONLY</b>	
76853	FISCALINI PURPLE MOON CHEDDAR 6OZ	8/6 OZ
3255	FISCALINI OLD WORLD AGED CHEDDAR 5O	8/5 OZ
	<b>DOMESTIC CHEESES: FIRE FLY FARMS</b>	
2650	FIREFLY MERRY GOAT ROUND 8/6OZ	8/6 oz
2644	FIREFLY MERRY GOAT SPRUCE RESERVE	6/9 oz
2647	FIREFLY MOUNTAIN TOP SOFT RIPENED GOAT	8/6 oz
2651	FIREFLY FRESH GOAT 12/4OZ (P)	12/4OZ
2652	FIREFLY FIG ORANGE FRESH GOAT (P)	12/4OZ
2653	FIREFLY HERBY HARISSA FRESH GOAT(P)	12/4OZ
2654	FIREFLY BLOOMY BREEZE 8/6OZ (P)	8/6OZ
	<b>DOMESTIC CHEESES: FORMAGGIO ITALIAN CHEESE</b>	
2763	FORMAGGIO HARD SALAMI & MOZZARELLA PARTY TRAY	9/6 oz
2769	FORMAGGIO MARINATED MOZZARELLA CUPS	6/12 oz
2773	FORMAGGIO MOZZ PRESLICED W/ BALSAMIC GLAZE	8/12 oz
2765	FORMAGGIO PEPPERONI & MOZZARELLA PARTY TRAY	9/6 oz
2766	FORMAGGIO PROSCIUTO & MOZZARELLA PARTY TRAY	9/5 oz
2768	FORMAGGIO SMOKED MOZZARELLA	12/8 oz
2764	FORMAGGIO SOPRESSATA & MOZZARELLA PARTY TRAY	9/5 oz
	<b>DOMESTIC CHEESES: FOUR FAT FOWL</b>	
64166	FOUR FAT FOWL ST. STEPHEN 6/8OZ	6/8 oz
64199	FOUR FAT FOWL CAMEMBERTHA 6/7OZ	6/7 oz
	<b>DOMESTIC CHEESES: GOAT LADY DAIRY</b>	
65975	GOAT LADY FIG & HONEY GOAT 5.3OZ	12/5.3 oz
65971	GOAT LADY SANDY CREEK 6/6.5 OZ	6/6.5 oz
65970	GOAT LADY SNOW CAMP 6/4 OZ	6/4 oz
65974	GOAT LADY SMOKEY MOUNTAIN ROUND 5OZ	6/5 OZ



1358



65974



5171



76853



5245



5246



5247



5248



5249



2650



2644



2651

	<b>DOMESTIC CHEESES: GREEN DIRT</b>	
74156	GREEN DIRT FARM BOSSA 6/8 OZ	6/8 oz
74154	GREEN DIRT FARM DIRT LOVER	8/6.5 oz
74162	GREEN DIRT FARM DIRT LOVER MINI (P)	8/3 OZ (P)
74151	GREEN DIRT FARM RUBY 6/10OZ	6/10 OZ
74155	GREEN DIRT FARM TUFFET 6/3 OZ	6/3 OZ
74152	GREEN DIRT FARM WEE WOLLY 12/3OZ	12/3 oz
74153	GREEN DIRT FARM WOOLLY RIND 6/5.5OZ	6/5.5 oz
74157	GREEN DIRT FRESH SHEEP 6/3.5OZ	6/3.5 oz
74159	GREEN DIRT FRESH SHEEP GARLIC &HERB	6/3.5 oz
74161	GREEN DIRT FRESH SHEEP GARLIC/ BLACK PEPPER	6/3.5 oz
74158	GREEN DIRT FRESH SHEEP ROSEMARY	6/3.5 oz
74160	GREEN DIRT FRESH SHEEP W/ NETTLE	6/3.5 oz
74164	GREEN DIRT WINTER WOOLLY 6/5OZ	6/5 oz
	<b>DOMESTIC CHEESES: GREY BARN</b>	
65611	GREY BARN EIDOLON 6/1#	6/1#
65610	GREY BARN PRUFROCK 9/8OZ	9/8 oz
	<b>DOMESTIC CHEESES: HOOK'S</b>	
96058	HOOKS 5 YEAR SHARP CHEDDAR PRECUT	12/8OZ
	<b>DOMESTIC CHEESES: JASPER HILL FARM</b>	
65801	JASPER HILL ALPHA TOLMAN WEDGES (P)	12/6OZ
65802	JASPER HILL CABOT CLOTHBOUND WEDGES (P)	12/6OZ
65743	JASPER HILL CAVE AGED CHEDDAR PIECE	12/6.5 oz
65787	JASPER HILL HARBISON 9/9 OZ	9/9 OZ
65783	JASPER HILL MINI-HARBISON 10/5 OZ	10/5 OZ
65749	JASPER HILL LITTLE HOSMER 12/4 OZ	12/4 oz
65760	JASPER HILL MOSES SLEEPER 4/16 OZ	4/16 oz
65776	JASPER HILL SHERRY GRAY 10/7OZ	10/7OZ (P)
65781	JASPER HILL WILLOUGHBY 8/8 OZ	8/8 oz
65777	JASPER HILL WINNIMERE 5/13OZ	5/13 oz

**74154**



**74158**



**96058**



**65610**



**DOMESTIC CHEESES: GRAFTON**

3430	GRAFTON 1 YEAR CHEDDAR BAR CRYO	12/8 oz
3431	GRAFTON 2 YEAR CHEDDAR BAR CRYO	12/8 oz
3432	GRAFTON MAPLE SMOKED CHEDDAR BAR CRYO	12/8 oz
3436	GRAFTON TRUFFLE CHEDDAR	12/8 oz

**DOMESTIC CHEESES: KAROUN DAIRIES**

4379	KAROUN COTIJA VAC PACK 8 OZ	12/8 oz
4394	KAROUN LABNE	6/1#
4396	KAROUN LABNE LITE	6/1#
4393	KAROUN PANEER INDIAN CHEESE	12/8 oz
4392	KAROUN QUESO BLANCO MEXICAN CHEESE	12/8 oz
4395	KAROUN QUESO FRESCO	12/8 oz
4382	KAROUN SMOKED STRING CHEESE	12/8 oz
4381	KAROUN STRING CHEESE MARINATED WITH HERBS	12/8 oz
4380	KAROUN STRING CHEESE WITH SEEDS	12/8 oz
4384	YANNI GRILLING CHEESE JALAPENO	12/8 oz
4383	YANNI GRILLING CHEESE PLAIN	12/8 oz

**DOMESTIC CHEESES: KAUKAUNA**

4971	KAUKAUNA CHEDDAR BALLS WINE -X	12/10 oz
4975	KAUKAUNA CHEDDAR LOGS WINE	12/10 oz

**DOMESTIC CHEESES: MILTON CREAMERY**

77101	MILTON FOUR ALARM CHEDDAR 12/6OZ	12/6OZ
77102	MILTON CARAMELIZED ONION CHED 12/6O	12/6OZ
77142	PRAIRIE BREEZE PRECUT WEDGES	12/6 oz

3430



4379



77101



77142



4394



77102



3436



EST. 1979  
**Laura CHENEL**  
  
 SONOMA, CA

**ELEVATE ANY RECIPE**

**GOAT CHEESE LOGS**

- 66082 Black Truffle Goat Cheese Log, 12/4 oz
- 66080 Original Goat Cheese Log, 12/4 oz
- 66081 Orange Blossom Honey Goat Cheese Log, 12/4 oz
- 66087 Cranberry Goat Cheese Log, 12/4 oz
- 66083 Garlic & Chive Goat Cheese Log, 12/4 oz
- 66085 Fig & Grapefruit Goat Cheese Log, 12/4 oz
- 66084 Kalamata Olive Goat Cheese Log, 12/4 oz
- 66063 Goat Log Original, 12/8 oz

**FRESH GOAT CHEESE (CHABIS)**

- 66053 Chabis Original, 6/5 oz
- 66046 Chabis Dill, 6/5 oz
- 66047 Chabis Thyme & Rosemary, 6/5 oz
- 66045 Chabis Four Peppercorn, 6/5 oz

**MARINATED GOAT CHEESE**

- 66094 Marinated Thyme & Rosemary, 9/6.2 oz
- 66095 Marinated Jalapeño Chili, 9/6.2 oz

**CRUMBLED GOAT CHEESE**

- 66059 Original Goat Cheese Crumbles 2/2 lbs

**AGED GOAT CHEESE**

- 66075 Creamy Goat Brie 6/5 oz

**SPREADABLE GOAT CHEESE**

- 66076 Spreadable Goat Cheese, 8/7 oz
- 66072 Chef's Chèvre, 2/4 lb



CALIFORNIA ORIGINAL  
**MARIN FRENCH** 1865  
 SINCE **FRENCH** CHEESE Co

**4oz PETITE BRIE**

- 5424 Petite Breakfast 6/4 oz
- 5425 Petite Camembert 6/4 oz
- 5421 Petite Crème 6/4 oz
- 5410 Petite Ash 6/4 oz
- 5435 Petite Suprême 6/4 oz
- 5431 Petite Truffle 6/4 oz

**8oz BRIE**

- 5422 Camembert 6/8 oz
- 5420 Traditional Brie 6/8 oz
- 5419 Triple Crème Brie 6/8 oz

**SPECIALTY**

- 5462 Golden Gate 6/8 oz



<b>DOMESTIC CHEESES: MONTCHEVRE</b>		
4104	MONTCHEVRE TRIPLE CREAM GOAT BRIE	9/6.34 OZ
4119	MONTCHEVRE COEUR DE CHEVRE ORGANIC HERB	12/4 oz
4118	MONTCHEVRE COEUR DE CHEVRE ORGANIC PLAIN	12/4 oz
4123	MONTCHEVRE CROTTIN GARLIC/HERB	18/3.5 oz
4125	MONTCHEVRE CROTTIN PLAIN	18/3.5 oz
4115	MONTCHEVRE CRUMBLLED GOAT PLAIN	12/4 oz
4146	MONTCHEVRE GOAT CHEDDAR	12/8 oz
4152	MONTCHEVRE GOAT LOGS BLUEBERRY VANILLA	12/4 oz
4126	MONTCHEVRE GOAT LOGS CRAN/CINNAMON 8oz	12/4 oz
4128	MONTCHEVRE GOAT LOGS HERB 12/4oz	12/4 oz
4145	MONTCHEVRE GOAT LOGS HONEY	12/4 oz
4156	MONTCHEVRE GOAT LOGS PEPPER	12/4 oz
4127	MONTCHEVRE GOAT LOGS SD TOM/BASIL	12/4 oz
4129	MONTCHEVRE GOAT LOGS WHITE 12/4oz	12/4 oz
4112	MONTCHEVRE JALAPENO HONEY GOAT CHEESE	12/4 oz
4132	MONTCHEVRE LOGS HERB 12/10.5oz	12/10.5 oz
4136	MONTCHEVRE LOGS WHITE 12/10.5oz	12/10.5oz
4107	MONTCHEVRE TRUFFLE GOAT CHEESE	12/4 oz
<b>DOMESTIC CHEESES: MYSTIC CHEESES</b>		
65877	MYSTIC CHEESE MELINDA MAE MINI	6/10 oz
<b>DOMESTIC CHEESES: NATURALLY GOOD KOSHER</b>		
2572	NATURALLY GOOD KOSHER MUENSTR BAR	12/8 oz
2570	NATURALLY GOOD KOSHER PEP JACK BAR	12/8 oz
2571	NATURALLY GOOD KOSHER SHARP YELLW BAR	12/8 oz
2578	NATURALLY GOOD KOSHER SLICED CHEDDAR	12/8 oz
2583	NATURALLY GOOD KOSHER SLICED GOUDA	12/8 oz
2581	NATURALLY GOOD KOSHER SLICED HAVART	12/8 oz
2582	NATURALLY GOOD KOSHER SLICED MOZZ	12/8 oz
2576	NATURALLY GOOD KOSHER SLICED MUENSTER	12/8 oz
2580	NATURALLY GOOD KOSHER SLICED PEP JACK	12/8 oz
2577	NATURALLY GOOD KOSHER SLICED PROV.	12/8 oz
2575	NATURALLY GOOD KOSHER SLICED SWISS	12/8 oz
2579	NATURALLY GOOD KOSHER SLICED YELLOW AMERICAN	12/8 oz
2574	NATURALLY GOOD KOSHER SMK GOUDA	12/8 oz
2592	NATURALLY GOOD WHT AMERICAN PRESLICE	12/8 oz

4119



4136



4104



65877

<b>DOMESTIC CHEESES: NETTLE MEADOW</b>		
4979	NETTLE MEADOW ADIRONJACK 6/8OZ (P)	6/8OZ
4985	NETTLE MEADOW APPLE CIDER FRAIS	8/5 oz
4984	NETTLE MEADOW CRNBRRY FROMAGE FRAIS	8/5 OZ (H)
4976	NETTLE MEADOW DANDELION INFUSED RHUBARB & HONEY CHEVRE	8/5 oz
4949	NETTLE MEADOW FROMAGE FRAIS MIXED	8/5 OZ
4990	NETTLE MEADOW HONEY FIG FROMAGE FRAIS	8/5 oz
4866	NETTLE MEADOW HONEY LAVENDER FROMAGE BLANC	8/5 oz
4865	NETTLE MEADOW KUNIK	6/8 oz
4948	NETTLE MEADOW KUNIK MINIS	9/3.5 oz
4734	NETTLE MEADOW MAPLE CHEVRE (P)	8/5 OZ
4735	NETTLE MEADOW MINI SIMPLY SHEEP	9/3.5 oz
4867	NETTLE MEADOW MIXED CHEVRE	8/5 oz
4818	NETTLE MEADOW MIXED HERB CHEVRE	8/5 OZ
4873	NETTLE MEADOW PLAIN CHEVRE	8/5 OZ
4825	NETTLE MEADOW PUMPKIN SPICE CHEVRE-Seasonal	8/5 OZ
4868	NETTLE MEADOW THREE SISTERS	6/6 OZ
4986	NETTLE MEADOW TRUFFLE FROMAGE FRAIS	8/5 OZ
4957	NETTLE MEADOW POTASH MOUNTAIN 6/8OZ	6/8OZ
4973	NETTLE MEADOW TRUFFLE KUNIK (P)	6/10OZ
<b>Domestic Cheeses: Nicasio</b>		
3971	NICASIO FOGGY MORNING E/W 6/6OZ	6/6OZ
3978	NICASIO FOGGY MORNING	6/6.5 OZ
3979	NICASIO FOGGY MORNING GARLIC& BASIL	6/8.5 OZ
3976	NICASIO GERONIMO RETAIL	8/8 OZ
3975	NICASIO RESERVE RETAIL	8/8 OZ
3977	NICASIO SQUARE RETAIL	8/6 OZ
3984	NICASIO FORMAGELLA ROUNDS 6/9OZ	6/9 OZ
3983	NICASIO TOMINO 6/9OZ	6/9OZ
3973	NICASIO LOCARNO ROUNDS E/W 6/6OZ	6/6OZ
3985	NICASIO LOCARNO ROUNDS 6/7 OZ	6/7 OZ
<b>DOMESTIC CHEESES: ODYSSEY</b>		
4296	ODYSSEY CRUMBLED FETA TRADITIONAL	12/6 oz
4290	ODYSSEY FETA PLAIN 12/8 OZ	12/8 oz
<b>DOMESTIC CHEESES: OLD CHATHAM CHEESES</b>		
4081	OLD CHATHAM HUDSON VALLEY CAMEMBERT	12/4 oz
4086	OLD CHATHAM KINDERHOOK CREEK 8/3.5O	8/3.5OZ
<b>DOMESTIC CHEESES: ORGANIC CREAMERY</b>		
4205	ORGANIC CREAMERY CRUMBLED BLUE CUPS	12/4 oz
4204	ORGANIC CREAMERY CRUMBLED FETA CUPS	12/6 oz

**4865, 4849**



**4873**



**4081**





<b>DOMESTIC CHEESES: POINT REYES</b>		
4076	POINT REYES BLUE WEDGES	1/6#
4070	POINT REYES QUINTA	12/6 OZ
<b>DOMESTIC CHEESES: PRESIDENT</b>		
4356	PRESIDENT CRUMBLLED FETA PLAIN	8/6 oz
4373	PRESIDENT FAT FREE CRUMBLLED FETA	8/6 oz
4346	PRESIDENT FAT FREE FETA CHUNK	12/8 oz
4348	PRESIDENTS KOSHER FETA CHUNKS	12/8 oz
<b>DOMESTIC CHEESES: RED APPLE</b>		
2595	HICKORY SMOKED BOURBON GOUDA 12/8OZ	12/8 oz
2573	RED APPLE KOSHER MONTEREY JACK BAR	12/8 oz
2589	RED APPLE SRIRACHA GOUDA	12/8 oz
<b>DOMESTIC CHEESES: RIZO BROS</b>		
3563	RIZO BROS. COTIJA 6/8OZ	6/8OZ
3565	RIZO BROS. OAXACA 6/8OZ	6/8OZ
<b>DOMESTIC CHEESES: ROUGE CREAMERY</b>		
77265	ROGUE OREGON BLUE ORGANIC WEDGES(P)	6/4.2OZ(P)
77266	ROGUE BLUE HORN ORGANIC WEDGES (P)	6/4.2OZ(P)
77269	ROGUE SMOKEY BLUE ORGANIC WEDGES(P)	6/4.2OZ(P)
<b>DOMESTIC CHEESES: SACH</b>		
5169	SACH ORGANIC PANEER	12/6OZ
5167	SACH ORGANIC SPICY HABANERO PANEER	12/6OZ
5168	SACH ORGANIC TUMERIC PANEER	12/6OZ
<b>DOMESTIC CHEESES: SEQUATCHIE COVE</b>		
65800	DANCING FERN 4/500G	4/500G
65816	SEQUATCHIE COVE WALDEN	8/7 OZ

**65985**



**2595**



**3563**



**5169**



**65800**

**65570 Plymouth Original Cheddar Red Wax 12/8oz**

Aged for one whole year, this is a full-bodied cheese, rounded with the perfect balance of cream and tang.

**65571 Plymouth Hot Pepper Cheddar Orange Wax 12/8oz**

A natural raw artisanal milk version of an American pepperjack, this hearty cheese, which is aged for sixty days, turns up the heat and buzzes with flavor.

**65572 Plymouth Smoked Cheddar Brown Wax 12/8oz**

Cold-smoked over hickory wood in the classic Vermont tradition, this natural raw artisanal cheddar comes to life somewhere between creamy, savory and proud.

**65573 Plymouth Hunter Cheddar Black Wax 12/8oz**

Hunter is a robust, mature, ivory-hued, no-nonsense sharp Vermont cheddar that would wear a plaid flannel shirt, chop your wood and build you a fire if it could.

**65574 Plymouth Truffle Cheddar Black Wax 12/8oz**

A luscious slow-dance of flavors; a mellow and approachable cheese that is at once earthy, straightforward, sexy and smooth.



**65985 Perrystead Intergalactic 6/4oz**

This All-American beauty is a soft-rinded lactic cow's milk cheese that cave-ripens for 14 days. The melt-in-your-mouth wrinkly rind, has fudgy texture beneath it, gradually turning fluffy and tangy towards the center core. The wooden box is perfect for baking and entertaining.



**65986 Perrystead Moonrise 6/4.5oz**

Moonrise is a fun, approachable, pocket-sized washed-rind cheese. Aged for 35 days, the washed rind wheels develop an orange rind while this method develops a smooth, silky texture beneath. The resulting cheese is creamy and balanced. Grassy, meaty with a surprising finish reminiscent of peanuts. Moonrise is a great melting cheese.



**65987 Perrystead Philly Schmea 12/7oz**

The Real Philly Schmea is an incredibly versatile spreadable cheese! Have it plain, on a bagel or toast, with toppings, or drizzled with honey on a cheese board. Use it for dips, fillings, cheesecakes, frostings, or ice cream ...endless savory or sweet possibilities!

**65988 Perrystead Treehug 6/8oz**

Named after the belts of spruce bark that strap around it, a centuries-old cold season cheese tradition, it develops a rich flavorful character and exceptional texture thanks to the naturally high lipids and proteins in winter milk, long cold aging, and rind washing.



	<b>DOMESTIC CHEESES: SHAFT'S</b>	
65709	SHAFTS BLUE 6 OZ E/W WEDGES	12/6 oz
65710	SHAFTS SERENDIPITY 6 OZ E/W WEDGES	12/6 OZ
	<b>DOM: SIERRA NEVADA ORGANIC CHEESES &amp; BUTTERS</b>	
US3032	SIERRA NEVADA CREAM CHEESE CHUB PLAIN ORGANIC	8/7 OZ
US3038	SIERRA NEVADA GOAT CHEDDAR AGED RAW	12/8 OZ
5434	SIERRA NEVADA ORGANIC EURO-STYLE SALTED BUTTER	12/8 oz
5436	SIERRA NEVADA ORGANIC EURO-STYLE UNSALTED BUTTER	12/8 oz
5408	SIERRA NEVADA ORGANIC FARMHOUSE CHEDDAR	12/7 oz
5405	SIERRA NEVADA ORGANIC JACK WEDGES	8/6 oz
5406	SIERRA NEVADA ORGANIC JALAPENO JACK WEDGES	8/6 oz
5407	SIERRA NEVADA ORGANIC SMOKEHOUSE JACK WEDGES	8/6 oz
	<b>DOMESTIC CHEESES: SUPREME</b>	
10661	SUPREME BITES IN BAG	12/4.4#
10657	SUPREME DOMESTIC MINI 6/7OZ	6/7oz
	<b>DOMESTIC CHEESES: SWEET GRASS DAIRY</b>	
66032	GREEN HILL CEMEMBERT 8oz	6/8 oz
66035	SWEET GRASS PIMENTO CHEESE 8/6OZ	8/6 oz
66026	LIL MOO ORIGINAL 8/7 OZ	8/7 OZ
66028	LIL MOO GARLIC/CHIVE - 8/7 OZ	8/7 OZ
	<b>DOMESTIC CHEESES: TULIP TREE CREAMERY</b>	
77215	TULIP TREE CHICORY 6/10 OZ (P)	6/10 OZ
77211	TULIP TREE FOXGLOVE 6/8OZ	6/8 oz
77216	TULIP TREE NETTLE 6/6 OZ (P)	6/6 OZ
77213	TULIP TREE SNAPDRAGON 6/8OZ (P)	6/8 OZ
77210	TULIP TREE TRILLIUM 6/8OZ	6/8 oz
	<b>DOMESTIC CHEESES: THE CHEESEGUY - KOSHER</b>	
2935	THE CHEESEGUY FRESH MOZZ. BALLS	12/8 oz
2933	THE CHEESEGUY GOAT LOG PLAIN	12/4 OZ
2936	THE CHEESEGUY GRATED PARMESAN	12/8 oz
2937	THE CHEESEGUY SHREDDED PARMESAN	12/5 oz
2717	THE CHEESEGUY 2YR AGED PARMESAN WDG	12/6.4OZ
2713	THE CHEESEGUY CHIPOTLE CHEDDAR	12/6.4OZ
2701	THE CHEESEGUY CRAFT BEER CHEDDAR	12/6.4OZ
2932	THE CHEESEGUY CRUMBLD GOAT	12/4 oz
2704	THE CHEESEGUY HAVARTI CREAMY	12/6.4OZ
2716	THE CHEESEGUY JALAPENO CHEDDAR JACK	12/6.4OZ
2931	THE CHEESEGUY KOSHER MANCHEGO	12/6.4OZ
2709	THE CHEESEGUY MONTEREY JACK	12/6.4 OZ
2714	THE CHEESEGUY NEW ZEALAND ORG SHARP	12/6.4OZ
2715	THE CHEESEGUY RAW SHARP WHT CHEDDAR	12/6.4OZ
2938	THE CHEESEGUY SHAVED ITALIAN BLEND	12/6 oz
2702	THE CHEESEGUY VERMONT ARTISAN MED.	12/6.4OZ
2703	THE CHEESEGUY YELLOW GOUDA	12/6.4OZ

66035



77210



2936



<b>DOMESTIC CHEESES: TILLAMOOK</b>		
4765	TILLAMOOK EXTRA SHARP BAR 12/8OZ	12/8 oz
4750	TILLAMOOK KOSHER CHED COLORED	12/7 oz
72354	TILLAMOOK MEDIUM SLICED CHEDDAR	12/8 oz
4763	TILLAMOOK SHARP BAR 12/8OZ	12/8 oz
4774	TILLAMOO'S COLBY JACK	12/7.5 oz
4772	TILLAMOO'S SHARP WHITE CHEDDAR	12/7.5 oz
<b>DOMESTIC CHEESES: VALLEY FORD</b>		
44861	ESTERO GOLD RESERVE RTL R/W	12/7 rw OZ
448601	ESTERO GOLD RETAIL CUTS	12/7 rw OZ
448602	HIGHWAY ONE RETAIL CUTS	12/7 rw OZ
<b>DOMESTIC CHEESES: VERMONT CREAMERY</b>		
4856	VERMONT BIJOU	6/2/ 2 oz
4855	VERMONT BONNE BOUCHE	6/4 oz
4854	VERMONT COUPOLE	6/6.5 oz
4830	VERMONT CREME FRAICHE	12/8 oz
69211	VERMONT CREMONT COW/ GOAT CHEESE	6/5 oz
4842	VERMONT CULTURED BUTTER SEA SALT	12/8 oz
4847	VERMONT CULTURED BUTTER UNSALTED	12/8 oz
4833	VERMONT GOAT LOG HERB	12/4 oz
4835	VERMONT GOAT LOG PLAIN	12/4 oz
4843	VERMONT MASCARPONE	12/8 oz
4837	VERMONT QUARK	6/8 oz
4928	VERMONT ST ALBANS	9/2/ 2 oz
4781	VERMONT GOAT LOG HONEY 4OZ	12/4 OZ
4826	VERMONT VANILLA CREME FRAICHE	12/8 OZ
4864	VERMONT SWEET TRUFFLE GOAT LOGS 4OZ	12/4 OZ
<b>DOMESTIC CHEESES: WOOD RIVER</b>		
3533	WOOD RIVER BLACK TRUFFLE WEDGES	12/8 oz
3535	WOOD RIVER CHIPOTLE GARLIC WEDGES	12/8 oz
3532	WOOD RIVER HERBS DE PROVENCE WEDGES	12/8 oz
3534	WOOD RIVER MANGO HABANERO WEDGES	12/8 oz
3536	WOOD RIVER NORTHWOODS CHEDDAR	12/8 oz
3530	WOOD RIVER ORIGINAL WEDGES	12/8 oz
3527	WOOD RIVER SMOKED BLACK PEPPERCORN WEDGES	12/8 oz

4765



3535



3533



36

448601

	<b>DOMESTIC CHEESES: YANCEY'S FANCY</b>	
5124	YANCEYS FANCY CHEDDAR BUFFALO HOT	10/7.6 oz
5125	YANCEYS FANCY CHEDDAR CHAMPAGNE	10/7.6 oz
5126	YANCEYS FANCY CHEDDAR HORSERADISH	10/7.6 oz
5128	YANCEYS FANCY CHEDDAR JALAPENO	10/7.6 oz
5127	YANCEYS FANCY CHEDDAR ROASTED GARLIC	10/7.6 oz
5122	YANCEYS FANCY CHEDDAR STEAKHOUSE ONION	10/7.6 oz
5133	YANCEYS FANCY FINGER LAKES SWISS	10/7.6 OZ
5132	YANCEYS FANCY MAPLE & BACON	10/7.6 OZ
5134	YANCEYS FANCY SMOKED GOUDA	10/7.6 oz
	<b>DOMESTIC CHEESES: ZINGERMAN'S</b>	
3393	ZINGERMAN'S PIMENTO CHEESE 6/6OZ	6/6 oz
	<b>DOMESTIC BUTTER</b>	
4321	KELLERS EUR BUTTER WRAPPED SALTED	12/8 oz
4320	KELLERS EUR BUTTER WRAPPED UNSALTD	12/8 oz
64180	VELVET BEES HONEY BUTTER 12/8OZ	12/8 oz
	<b>PLANT BASED PRODUCTS: ESTI</b>	
3581	ESTI PLANT BASED VEGAN AMERICAN SLICES	12/7 oz
3582	ESTI PLANT BASED VEGAN CHEDDAR SLICES	12/7 oz
3580	ESTI PLANT BASED VEGAN FETA SLICES	12/7 oz
3583	ESTI PLANT BASED VEGAN MOZZARELLA SLICES	12/7 oz
3590	ESTI PLANT BASED VEGAN BURGER	8/7.8 oz
3591	ESTI PLANT BASED VEGAN MEATBALLS	6/7.9 oz
	<b>CHEESE ACCOMPANIMENTS: FRUIT &amp; FRUIT CAKES</b>	
9209	AMARENA CHERRIES	6/8.8 oz
62008	MATIZ APRICOT BREAD DEMI LUNA 12/8.8OZ (P)	12/8.8 oz
62062	MATIZ FIG BREAD DEMI-LUNA 12/8.8OZ	12/8.8 oz
2240	MEMBRILLO QUINCE PASTE	12/10 oz
2299	MIGOS FIGS	10/5.2 oz
50570	PALLONE DI FICHI FIG BALLS 24/200G	24/200G
62366	PLAZA MAYOR FIG CAKES 10/200G	10/200G
62848	PLUMS AMEIXAS D'ELVA WOOD BOX 1/320G	1/320G
62394	QUINCE, CORAZON FRUIT PASTE 8.45OZ	18/8.45oz

5124



5127



5134



3393



50570

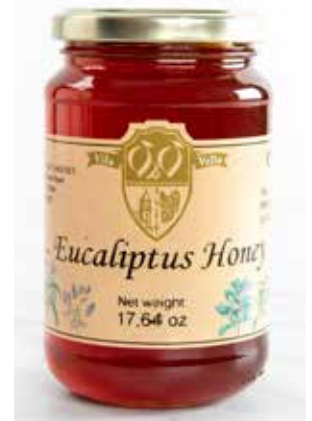


<b>CHEESE ACCOMPANIMENTS: DA MORGADA</b>		
62838	CASA LUSA MEMBRILLO QUINCE PASTE	8/200G
62862	DA MORGADA DOP PLUMS 6/200G	6/200G
62878	DA MORGADA FIGS WOODEN BOX 1/320G	1/320G
62874	DA MORGADA HEATHER HONEY 6/240G	6/240G
62881	DA MORGADA HONEY DROP FIGS 1/2.5K	1/2.5K
62877	DA MORGADA ORANGE BLOSSOM HONEY	6/240G
62864	DA MORGADA PLUMS DOP ELVAS 15/200G	15/200G
62890	DA MORGADA QUINCE JELLY 12/250G	12/250G
62839	DA MORGADA QUINCE JELLY 6/250G	6/250G
62858	DA MORGADA QUINCE PASTE 10/180G	10/180G
62860	DA MORGADA TOMATO JAM	6/240G
PG500	DA MORGADA WILD LAVENDER HONEY	6/10 oz
<b>ACCOMPANIMENTS: HONEY &amp; TRUFFLES- CAL VALS</b>		
SP400	HONEY EUCALYPTUS	6/17.5 oz
SP410	HONEY LAVENDER	6/17.5 oz
SP430	HONEY ROSEMARY	6/17.5 oz
SP460	HONEY WILD OAK	6/17.5 oz
SP420	HONEY ORANGE BLOSSOM	6/17.5 oz
SP440	HONEY THOUSAND FLOWERS	6/17.5 oz
SP450	HONEY THYME	6/17.5 oz
<b>CHEESE ACCOMPANIMENTS: HONEY &amp; TRUFFLES- REGALIS</b>		
74142	REGALIS TRUFFLE PEELINGS 1/200G	1/200G
74112	REGALIS BLACK TRUFFLE HONEYCOMB 3OZ	12/3 OZ
74114	REGALIS BLACK TRUFFLE BUTTER 12/4OZ	12/4 OZ
74118	REGALIS ORG. BLACK SUMMER TRUFFLE	6/1 OZ
74110	REGALIS BLACK TRUFFLE BALSAMIC 100M	6/100 ML
74124	REGALIS BLACK TRUFFLE OIL 100 ML	6/100 ML
74126	REGALIS WHITE TRUFFLE OIL 100 ML	6/100 ML
74125	REGALIS BLACK TRUFFLE OIL 6/250 ML	6/250 ML
74113	REGALIS BLACK TRUFFLE BALSAMIC 250M	6/250 ML
74127	REGALIS WHITE TRUFFLE OIL 6/250 ML	6/250 ML
74120	REGALIS BLACK TRUFFLE CARPACCIO	6/3 OZ
74116	REGALIS BLACK TRUFFLE SAUCE 3OZ	6/3 OZ
74143	REGALIS BLACK TRUFFLE POPCORN	6/3/100G
74132	REGALIS BLACK TRUFFLE CARPACCIO 85	6/3oz
74119	REGALIS BLACK TRUFFLE SAUCE 500G	6/500 GM
74129	REGALIS TENNESSEE TRUFFLE HONEYCOMB	6/6 OZ
74122	REGALIS DRIED BLACK MORELS 8/1 OZ	8/1 OZ
74123	REGALIS DRIED PORCINI 8/1 OZ	8/1 OZ

**62881**



**SP400**



**SP440**



**62838**



**62878**



<b>CHEESE ACCOMPANIMENTS: HONEY &amp; TRUFFLES-SABATINO</b>		
8360	SABATINO CARPACCIO BLK SUMMER TRUFF	12/3.2 OZ
8373	SABATINO ORG WHITE TRUFFLE OIL 6PK	6/2.11OZ
8371	SABATINO ORG. BLACK TRUFFLE OIL 6PK	6/2.11OZ
8375	SABATINO TRUFFLE HONEY 6/4.5OZ	6/4.5 OZ
8369	SABATINO TRUFFLE PISTACHIO CREAM	6/3.4OZ
8376	SABATINO TRUFFLE ZEST 6PK	6/1.76OZ
8361	SABATINO WHITE TRUFFLE CREAM	12/3.2 OZ
8377	SABATINO WHL BLK SUMMER TRUFFLE 6PK	6/1.4OZ
8362	SABATINO TRUFFLE AND SALT	12/4OZ
MS340	SABATINO TRUFFLE HONEY 6/8.8 OZ	6/8.8 OZ
OS370	SABATINO TRUFFLE OIL MINI BK TARTUFI	12/3.4 OZ
OS385	SABATINO TRUFFLE OIL MINI WHITE	12/3.4 OZ
MS351	SABATINO TRUFFLE SEA SALT(SO)	6/3.4 OZ
8359	SABATINO TRUFFLE ZEST & CHEESE SEAS	12/2.11 OZ
MS342	SABATINO TRUFFLE HONEY 12/4.5 OZ	12/4.5 OZ
8365	SABATINO ORGANIC WHITE TRUFFLE OIL	12/3.4OZ
8364	SABATINO ORGANIC BLACK TRUFFLE OIL	12/3.4OZ
8367	SABATINO TRUFFLE CRISPS 12/5OZ	12/5OZ
8370	SABATINO TRUFFL ZEST&CHEESE SEAS 6PK	6/2.11OZ
8372	SABATINO TRUFFLE SPREAD 6PK	6/2.11OZ
<b>CHEESE ACCOMPANIMENTS: HONEY &amp; TRUFFLES-URBANI</b>		
84119	URBANI BLACK TRUFFLE BUTTER	8/3 OZ
84110	URBANI BLK TRUFFLES/ MUSHROOM SAUCE	6/2.82OZ
84120	URBANI ITALIAN TRUFFLE CHEESE SPREA	6/7OZ
84112	URBANI SUMMER TRUFFLE FLAVOR HONEY	6/3.17 OZ
84116	URBANI WHITE TRUFFLE BUTTER 8/1#	8/1#
84117	URBANI WHITE TRUFFLE BUTTER 8/3 OZ	8/3 OZ
84115	URBANI WHITE TRUFFLES FLAVORED SALT	6/3.5 OZ
84114	URBANI WHT TRUFFLE FLAVOR EVOO 3.38	6/3.38 OZ
84113	URBANI WHT TRUFFLE FLAVOR EVOO 8.45	6/8.45 OZ
84111	URBANI WHT TRUFFLES & PORCINI SAUCE	6/2.82 OZ

8360



8377



84113



84114



MS342

MS342



83350



<b>CHEESE ACCOMPANIMENTS: JAMS &amp; TAPENADES-BONNIE'S</b>		
<b>WEST STOCK ONLY</b>		
83480	BONNIE'S APRICOT ORANGE JAM	6/8.75 OZ
83481	BONNIE'S BLACKBERRY/BLUEBERRY JAM	6/8.75 OZ
83495	BONNIE'S CRANBERRY ORANGE W/ BRANDY	6/9 OZ (P)
83485	BONNIE'S NUTS AND HONEY	6/9.85 OZ
83486	BONNIE'S PEACH GINGER JAM	6/8.75 OZ
83488	BONNIE'S RASPBERRY LIME RICKEY	6/8.75 OZ
83490	BONNIE'S RED PEPPER JELLY	6/8.75 OZ
83492	BONNIE'S STRAWBERRY RHUBARB JAM	6/8.75 OZ
<b>CHEESE ACCOMPANIMENTS: JAMS &amp; TAPENADES-BRINNS</b>		
83350	BRINS BANANA JAM 12/7.5OZ	12/7.5OZ
83351	BRINS CHERRY CHAI JAM 12/7OZ	12/7OZ
83354	BRINS CHILI PEPPER JAM 12/7.5OZ	12/7.5OZ
83353	BRINS LEMON SAFFRON JAM 12/7.5OZ	12/7.5OZ
83355	BRINS ROSEMARY GRAPEFRUIT JAM 7.5OZ	12/7.5OZ
83352	BRINS STRAWBERRY LEMONGRASS JAM	12/7.5OZ
83356	BRINS WILD BLUEBERRY SUMAC 7.5OZ	12/7.5 OZ
<b>CHEESE ACCOMPANIMENTS: JAMS &amp; TAPENADES- DALMATIA</b>		
4190	DALMATIA FIG SPREAD	12/8.5 oz
87335	DALMATIA FIG SPREAD 1 OZ	30/1 oz
4247	DALMATIA MINI SOUR CHERRY SPREAD	30/1 oz
4188	DALMATIA ORANGE FIG SPREAD	12/8.5 oz
4178	DALMATIA ORGANIC APRICOT	12/8.5 oz
4168	DALMATIA ORGANIC BLACKBERRY	12/8.5 oz
4197	DALMATIA PLUM SPREAD	12/8.5 oz
87336	DALMATIA ORGANIC SUPER BERRY	12/8.5OZ
4196	DALMATIA SOUR CHERRY SPREAD	12/8.5 oz
4191	DALMATIA OLIVE TAPENADE (BLACK)	12/6.7 oz
4189	DALMATIA OLIVE TAPENADE (GREEN)	12/6.7 oz
<b>CHEESE ACCOMPANIMENTS: JAMS &amp; TAPENADES- DIVINA</b>		
96156	DIVINA DATE SPREAD 12/9OZ	12/9OZ
9569	DIVINA KALAMATA OLIVE SPREAD	6/8.5 oz
83469	DIVINA CALABRIAN CHILI ORANGE SPRD	12/9 OZ
9526	DIVINA FIG SPREAD	12/9 oz
9527	DIVINA ORANGE SPREAD	12/9 oz



40

83350



9569



<b>JAMS &amp; TAPENADES-EAT THIS YUM</b>		
83437	ETY BANANA JAM	12/7OZ
83439	ETY HEIRLOOM CRANBERRY COMPOTE	12/7OZ
83441	ETY SWEET MINI TRIO GIFT SET	12/3/3OZ
83442	ETY SAVORY MINI TRI GIFT SET	12/3/3OZ
83430	ETY SEEDLESS BLACKBERRY ROSEMARY JAM	12/7OZ
83431	ETY BLUEBERRY CARDAMOM PRESERVE	12/7OZ
83433	ETY STRAWBERRY LEMON LAVENDER PRESE	12/7OZ
83435	ETY TIPSY PEACH PRESERVE	12/7OZ
83440	ETY ORANGE SAFFRON CARDAMOM MARMALA	12/7OZ
83438	ETY BALSAMIC CARAMELIZED ONIONS	12/7OZ
83432	ETY FLAMIN RASPBERRY PRESERE	12/7OZ
83434	ETY TOMATO JALAPENO MARMELADE	12/7OZ
83436	ETY UNCURED BACON MARMALADE	12/10.5OZ
<b>CHEESE ACCOMPANIMENTS: FRIEND IN CHEESES</b>		
<b>ONLY STOCKED ON WEST COAST</b>		
336245	FIC JAM HOT COBB JELLY 2.5 OZ	12/2.5 OZ
336340	FIC MINI FIG N' FENNEL JAM	12/2.5 OZ
336332	FIC MINI FORBIDDEN FRUIT MARMALADE	12/2.5 OZ
336333	FIC MINI LAVENDER PLUM JELLY	12/2.5 OZ
336334	FIC MINI ONION JAM	12/2.5 OZ
336336	FIC MINI PINOT CHERRIES	12/2.5 OZ
336339	FIC MINI PISCO PEAR BUTTER	12/2.5 OZ
336241	FIC MINI PRICKLY PURPLE HEART JAM 1	12/2.5 OZ
336330	FIC MINI ROSIES HIP JELLY	12/2.5 OZ
336331	FIC MINI SMOKIN PADRON JAM	12/2.5 OZ
336329	FIC MINI STRAWBERRY TARRAGON JAM	12/2.5 OZ
336342	FIC MINI TART N' SPICY TOMATO JELLY	12/2.5 OZ
336343	FIC MINI WATERMELON JELLY	12/2.5 OZ
336345	FIC FIG FENNEL JAM 2/128 OZ	2/128 OZ
336346	FIC ONION JAM 2/128 OZ	2/128 OZ
336225	FIC JAM FIG N FENNEL	6/8 OZ
336244	FIC JAM HOT COB JELLY 8 OZ	6/8 OZ
336227	FIC JAM LAVENDER PLUM JELLY	6/8 OZ
336320	FIC JAM PINOT CHERRIES	6/8 OZ
336226	FIC JAM ROSIES HIP JELLY	6/8 OZ
336229	FIC JAM SALTED WATERMELON JELLY	6/8 OZ
336223	FIC ONION JAM	6/8 OZ
336232	FIC PISCO PEAR BUTTER	6/8 OZ
336240	FIC PRICKLY PURPLE HEART JAM 6/8OZ	6/8 OZ
336238	FIC SMOKIN' PADRON JAM	6/8 OZ
336237	FIC TART'N SPICY TOMATO JELLY	6/8 OZ

83437



83436



336240



336241



336229



336343



<b>CHEESE ACCOMPANIMENTS: JAMS &amp; TAPENADES: FINE CHEESE CO</b>		
<b>PREORDER ONLY</b>		
83381	FCC PLUM CHUTNEY 6/240G (P)	6/240G
83382	FCC ONION CHUTNEY 6/240G (P)	6/240G
83383	FCC PEACH CHUTNEY 6/240G (P)	6/240G
83384	FCC FIG CHUTNEY 6/240G (P)	6/240G
83385	FCC PICCALILLI CHUTNEY 6/240G (P)	6/240G
83390	FCC GOOSEBERRY JAM 4OZ	6/4OZ (P)
83391	FCC QUINCE JAM 4OZ	6/4OZ (P)
83392	FCC FIG JAM 6/4OZ (P)	6/4OZ
83393	FCC CHERRY JAM 4OZ	6/4OZ (P)
83394	FCC LIME CHILLI JAM 4OZ	6/4OZ (P)
83395	FCC DAMSON JAM 4OZ	6/4OZ (P)
<b>CHEESE ACCOMPANIMENTS: JAMS &amp; TAPENADES: FOLIES FROMAGE</b>		
FP180	Folies : Espelette chilli pepper jelly for aged cheeses	6/4.23 oz
FP150	Folies : Apricot and cumin for camembert and other soft cheeses	10/4.23 oz
FP170	Folies : Black cherry with liquorice for sheep cheese	10/4.23 oz
FP135	Folies : Blueberry, wild thyme for aged cow's cheeses (cheddar, comté, ... )	10/4.23 oz
83420	Folies : Fromages Assorted jams (36 units) (3 x Quince - Pear honey with spices - Pear walnuts with honey - Espelette chilli pepper jelly /6 x Fig - Black cherry - Blueberry - Apricot)	10/4.23 oz
FP160	Folies : Apple and quince with spices for Roquefort and other blue cheeses	10/4.23 oz
FP140	Folies : Fig and small raisins for goat cheeses	10/3.38 oz
<b>CHEESE ACCOMPANIMENTS: JAMS &amp; TAPENADES: KELLY'S</b>		
<b>ONLY STOCKED ON WEST COAST</b>		
83406	KELLY'S MARIONBERRY HABANERO JELLY	12/5.1OZ
83405	KELLYS BLUEBERRY LEMON PRESERVES	12/12OZ
83407	KELLY'S HABANERO PEPPER JELLY 5.1OZ	12/5.1 OZ
83408	KELLY'S HABANERO HONEY 6/12OZ	6/12 OZ
83402	KELLY'S PINEAPPLE JALAPENO JELLY	12/12 OZ
83403	KELLY'S STRAWBERRY HABANERO JELLY	12/12 OZ
83401	KELLY'S MARIONBERRY HABANERO JELLY	12/12 OZ
83400	KELLY'S HABANERO PEPPER JELLY	12/12 OZ
<b>CHEESE ACCOMPANIMENTS: JAMS &amp; TAPENADES- LA BON MAGOT</b>		
91125	LBM KUMQUAT COMPOTE W/ COGNAC CINNA	12/7OZ
91126	LBM TUNISIAN STYLE LEMON IN OLIVE O	12/7OZ
91134	LBM SOUR CHERRY POMEGRANATE CONSERV	12/7OZ (P)
91120	LBM BRINJAL CAPONATA 12/7OZ	12/7 oz
91130	LBM CARROT/FRUIT CONSERVE W/ CORIAN	12/7 oz
91121	LBM LEMON-SULTANA MARMALATA 12/7OZ	12/7 oz
91122	LBM SPICED RAISIN MARMALATA 12/7OZ	12/7 oz
91123	LBM TOMATO & WHITE SULTANA CHUTNEY	12/7 oz
91124	LBM WHITE PUMPKIN & ALMOND MURABBA	12/7 oz

83381



83392



**FP150, FP160  
FP180, FP140  
(Top To Bottom)**



83400



91120



<b>CHEESE ACCOMPANIMENTS: JAMS &amp; TAPENADES-MARCHE BERBER</b>		
86021	MARCHE BERBER AMLOU (P)	12/6OZ
86020	MARCHE BERBER CULINARY ARGAN OIL (P)	12/8.5OZ
86022	MARCHE BERBER SAFFRON HONEY (P)	12/9OZ
86023	MARCHE BERBER SAFFRON VANILLA HONEY	12/9OZ
<b>CHEESE ACCOMPANIMENTS: JAMS &amp; TAPENADES- MATIN</b>		
65182	MATIN CHESTNUT JAM	6/7.76 oz
FP070	MATIN JAM APRICOT	6/13 oz
FP080	MATIN JAM FIG	6/13 oz
FP090	MATIN JAM PEACH APRICOT RASPBERRY	6/13 oz
FP110	MATIN JAM RASPBERRY	6/13 oz
65180	MATIN JAM ROSE PETAL	6/4.23oz
FP115	MATIN JAM ROSE PETAL JELLY	6/13 OZ
FP065	MATIN JAM TANGERINE MARMALADE	6/13 oz
65184	MATIN MORELLO CHERRY	6/13 oz
<b>CHEESE ACCOMPANIMENTS: MAHJOUR</b>		
<b>PREORDER ONLY</b>		
61565	MAHJOUR GRAPEFRUIT MARMALADE 6/240G (P)	6/240G
61569	MAHJOUR ORANGE MARMALADE-BITTER 6/9OZ (P)	6/9 oz
61557	MAHJOUR ORGANIC CANDIED LEMON & FIG CHUTNEY (P)	6/210G
61556	MAHJOUR ORGANIC FIG JAM 6/240G (P)	6/240G (P)
61555	MAHJOUR STRAWBERRY JAM 6/240G (P)	6/240G (P)
<b>CHEESE ACCOMPANIMENTS: OREGON GROWERS AND SHIPPERS</b>		
<b>ONLY STOCKED ON WEST COAST</b>		
69740	OREGON GROWERS APPLE BUTTER SPREAD 12OZ	6/12 OZ
69743	OREGON GROWERS BLUEBERRY FRUIT SPREAD	6/12 OZ
69747	OREGON GROWERS CHERRY ZINFANDEL FRUIT SPREAD	6/12 OZ
69755	OREGON GROWERS HUCKLEBERRY SPREAD 6/12OZ	6/12OZ
69741	OREGON GROWERS MARIONBERRY FRUIT SPREAD	6/12 OZ
69745	OREGON GROWERS PEAR HAZELNUT FRUIT PÂTÉ	12/5 OZ
69744	OREGON GROWERS PEAR HAZELNUT FRUIT SPREAD	6/12 OZ
69742	OREGON GROWERS QUINCE FRUIT PATE	12/5 OZ
69746	OREGON GROWERS RED RASPBERRY FRUIT SPREAD	6/12 OZ
69751	OREGON GROWERS SOUR CHERRY FRUIT PATE	12/5 OZ
69748	OREGON GROWERS STRAWBERRY FIG FRUIT PATE	12/5 OZ
69749	OREGON GROWERS STRAWBERRY PINOT NOIR SPREAD	6/12 OZ
69738	OREGON GROWERS STRAWBERRY RHUBARB SPREAD	6/12 OZ
69739	OREGON GROWERS TRIPLE BERRY FRUIT SPREAD	6/12 OZ



**86602**



**65180**

	<b>CHEESE ACCOMPANIMENTS: RUTHERFORD &amp; MEYER</b>	
	<b>ONLY STOCKED ON WEST COAST</b>	
62703	PLUM FRUIT PASTE	12/4.2 OZ
62708	CHERRY FRUIT PASTE	12/4.2 OZ
62700	PEAR FRUIT PASTE	12/4.2 OZ
62713	QUINCE FRUIT PASTE	12/4.2 OZ
62718	FIG FRUIT PASTE	12/4.2 OZ
62710	APRICOT FRUIT PASTE	12/4.2 OZ
	<b>CHEESE ACCOMPANIMENTS: JAMS &amp; TAPENADES-REGALIS</b>	
74136	REGALIS CLOUDBERRY JAM 12/6.7OZ PRE-ORDER ONLY	12/6.7 oz
74135	REGALIS SASKATOON JAM 12/6.7OZ PRE-ORDER ONLY	12/6.7 oz
74137	REGALIS LOWBUSH BLUEBERRY PRESERVES	12/6.7 OZ
74140	REGALIS WILD BLACKBERRY PRESERVES	12/6.7OZ(P
74138	REGALIS SEA BUCKTHORN PRESERVES (P)	12/6.7OZ-P
	<b>CHEESE ACCOMPANIMENTS: THE CASA MARKET</b>	
	<b>ONLY STOCKED ON WEST COAST</b>	
62946	THE CASA MARKET 3 VARIETY PACK	6/3PACK
62947	THE CASA MARKET AVOCADO HONEY 11OZ	12/11OZ
62948	THE CASA MARKET AVOCADO HONEY MINI 1.1OZ	18/1.1OZ
62949	THE CASA MARKET MEZQUITE HONEY 11OZ	12/11OZ
62953	THE CASA MARKET MULTIFLORA HONEY 11OZ	12/11OZ
62954	THE CASA MARKET MEZQUITE HONEY MINI 1.1OZ	18/1.1 OZ
62962	THE CASA MARKET GUAVA MARMALADE GOURMET 9.88OZ	12/9.88OZ
62959	THE CASA MARKET GUAVA PASTE	16/4OZ
62958	THE CASA MARKET GUAVA PASTE WITH PECAN	16/4OZ
62961	THE CASA MARKET HIBISCUS MARMALADE 9.88OZ	12/9.88OZ
62965	THE CASA MARKET MINI GUAVA MARMALADE 18/1.16OZ	18/1.16OZ
62967	THE CASA MARKET MINI HIBISCUS MARMALADE 1.16OZ	18/1.16OZ
62966	THE CASA MARKET MINI QUINCE JAM 18/1.16OZ	18/1.16OZ
62963	THE CASA MARKET QUINCE JAM 9.88OZ	12/9.88OZ
62968	THE CASA MARKET QUINCE PASTE 16/4OZ	16/4OZ
62969	THE CASA MARKET QUINCE PASTE WITH PECAN 16/4OZ	16/4OZ
62955	THE CASA MARKET VANILLA BEAN	12/2UNITS
62956	THE CASA MARKET VANILLA EXTRACT	12/4OZ
62957	THE CASA MARKET VANILLA PASTE	12/4OZ
	<b>CHEESE ACCOMPANIMENTS: LA MALVA ROSA</b>	
45770	LA MALVA ROSA BASIL PESTO 12/130G	12/130G
45782	LA MALVA ROSA BLACK OLIVE TAPENADE	12/180G
45790	LA MALVA ROSA COUNTRY ARTICHOKE	12/280G
45771	LA MALVA ROSA SUNDRIED TOMATO PESTO	12/130G

62703



74136



62947



45771



<b>CHEESE ACCOMPANIMENTS: MITICA</b>		
2272	MITICA FIG JAM	10/7 oz
2478	MITICA FIG MINI JAM JARS 24/1.4OZ	24/1.4OZ
2309	CHOCOLATE COVERED CHERRIES (CHOCO CHERRIES)	10/4.9 oz
2300	CHOCOLATE COVERED FIGS (CHOCO HIGO)	10/140G
2266	CHOCOLATE COVERED DATES	10/4.9OZ
2299	MIGOS FIGS	10/140G
2329	ORANGE DELIGHTS	10/4.9 oz
2351	MITICA CARAMELIZED PECANS MINITUB	12/4.41 OZ
2466	MITICA CARMELIZED WALNUT MINI TUBS	12/3.53 OZ
2352	MITICA PIEDRAS DE CHOCOLATE MINITUB	12/5.6 OZ
2353	MITICA QUICOS CRUNCHY CORN MINITUB	12/2.82 oz
93253	MITICA SPICY MARCONA RETAIL 8/4 OZ	8/4 OZ
2246	MARCONA TRUFFLE MINITUB 12/4OZ (P)	12/4 OZ
2474	MITICA MARCON ALMONDS FRIED W/ SKIN	8/4OZ
2256	MITICA MARCONA ALMONDS RETAIL	8/4 oz
2475	MITICA MOKA PECANS MINI TUB 4.41OZ	12/4.41OZ
2472	MITICA PESETAS CHOCOLATE FIG ALMOND	18/2.6OZ
2473	MITICA PESETAS DATE ALMONDS	18/2.6OZ
2477	MITICA PESETAS CHOCOLATE DATE ALMON	18/2.6OZ
2476	MITICA PESETAS FIG ALMOND 18/2.6OZ	18/2.6OZ
<b>CHEESE ACCOMPANIMENTS: NUTS</b>		
9091	LA SAISON OLIVE OIL RSTD ALMOND 2.5	24/2.5 OZ
62212	PLAZA MAYOR MARCONA ALMONDS	18/100G
62213	PLAZA MAYOR VALENCIA ALMONDS W/ FLO	18/100G
<b>CHEESE ACCOMPANIMENTS: NUTS- B'S NUTS</b>		
63483	B'S NUTS DECADENT CASHEWS	10/6 OZ
63484	B'S NUTS SUBLIME CASHEWS	10/6 OZ
63485	B'S NUTS INSATIABLE CASHEWS	6/10 OZ
<b>CHEESE ACCOMPANIMENTS: NUTS-CARMEN DE TORRE</b>		
SP630	ALMONDS MARCONA WOOD FIRE	6/4 OZ
<b>CHEESE ACCOMPANIMENTS: NUTS- URBANI</b>		
84122	URBANI BLACK TRUFFLE ALMOND	8/4OZ
84123	URBANI BLACK TRUFFLE LUXURY MXD NUT	8/4OZ
84124	URBANI BLACK TRUFFLE CASHEWS	8/4OZ

**2272**



**2351**



**2474**



**9091**



**63483**



**63484**

<b>CHEESE ACCOMPANIMENTS: SAVANNAH BEE</b>		
69980	SAVANNAH BEE ACACIA HONEY 12/3OZ	12/3 oz
69986	SAVANNAH BEE ACACIA HONEYCOMB	12/12.3oz
69987	SAVANNAH BEE ACACIA HONEYCOMB MINI	12/5.6 oz
69992	SAVANNAH BEE EVERYDAY HONEY SAMPLER	6/9OZ
69982	SAVANNAH BEE HONEY FOR CHEESE12/3OZ	12/3 oz
69990	SAVANNAH BEE HONEY STRAW 12 PACK -P	12/2OZ
69993	SAVANNAH BEE HOT HONEY MINI 12/3OZ	12/3OZ
69994	SAVANNAH BEE HOT HONEY TOWER 12OZ	12/12OZ
69981	SAVANNAH BEE LAVENDER HONEY 12/3OZ	12/3 oz
69984	SAVANNAH BEE TUPELO HONEY 12/3OZ	12/3 oz
69991	SAVANNAH BEE WHIPPED HONEY SAMPLER	6/9OZ
69988	SAVANNAH BEE WHIPPED LEMON HONEY	12/3oz
69985	SAVANNAH BEE WHIPPED ORIGINAL HONEY	12/3 oz
<b>MISC GOURMET</b>		
62892	MORGADA PIRIPIRI HOT SAUCE 12/100ML	12/100ML
62396	PAPRIKA HOT(12/2.6OZ)REY DE LA VERA	12/2.6 oz
62398	PAPRIKA SWEET 12/2.6OZ REY DE VERA	12/2.6 oz
62395	RICE BOMBA SPANISH12/2.2	12/2.2#
62397	RICE, PAELLA (12/1KG) MATIZ	12/1K
62530	ROMESCO SAUCE (6/6.5OZ) MATIZ	6/6.5 oz
62533	SAFFRON JARS(12/0.8G) MATIZ	12/0.8G
62414	SEA SALT FLOR DE SAL(8/4OZ)MATIZ	8/4 oz
1780	WILD HIBISCUS FLOWERS IN SYRUP	15/8.8 oz
<b>MISC GOURMET MAHJOUB</b>		
<b>PREORDER ONLY</b>		
61605	MAHJOUB BAKLOUTI HARISSA 6/185G (P)	6/185G
61560	MAHJOUB BLACK OLIVE SPREAD 6/7OZ (P)	6/7 oz
61534	MAHJOUB CAPERS IN SEA SALT 6/3.5OZ (P)	6/3.5 oz
62757	MAHJOUB EXTRA VIRGIN OLIVE OIL	12/370ML
61565	MAHJOUB GRAPEFRUIT MARMALADE 6/240G	6/240G
62755	MAHJOUB HAND ROLLED WHOLE WHEAT COUSCOUS	12/500g
61601	MAHJOUB HARISSA SPICE JARS 6/185G	6/185G
61603	MAHJOUB HARISSA SPREAD BULK 6/700G	6/700G
62785	MAHJOUB ISRAELI TOASTED COUSCOUS 4/5# (P)	4/5#
62739	MAHJOUB MHAMSA COUSCOUS PLAIN 12/500G	12/500G
61539	MAHJOUB OLIVES W/ GARLIC HERBS 200G	12/200G
61538	MAHJOUB OLIVES W/ HARISSA 12/200G	12/200G
62749	MAHJOUB PRESERVED LEMONS	12/200G
61563	MAHJOUB SAHLI OLIVES 12/130G	12/130G
62758	MAHJOUB TEBOURSOUK COUSCOUS PASTA SAUCE (P)	6/640g
61597	MAHJOUB TOMATO SPICY SUN DRI 6/7OZ	6/7 oz
61561	MOULIN MAHJOUB SHAKSHUKA SAUCE 340G	12/340g

69987



69982



62398

62396



61601



	<b>MISC GOURMET: ANETO BROTH</b>	
62113	ANETO CHICKEN BROTH 6/34OZ	6/34oz
62118	ANETO COOKING BASE SEAFOOD 6/34OZ	6/34oz
62119	ANETO COOKING BASE SQUID INK 6/34OZ	6/34oz
62117	ANETO COOKING BASE VALENCIAN 6/34OZ	6/34oz
62116	ANETO FISH BROTH 6/34OZ	6/34oz
62114	ANETO LOW SODIUM CHICKEN BROTH 6/34OZ	6/34oz
62115	ANETO VEGETABLE BROTH 6/34OZ	6/34oz
	<b>MISC GOURMET: LES TROIS SOUS - VIDE EGG BITES</b>	
5881	LES TROIS EGG BITE BACON & SWISS	12/2.5 oz
5926	LES TROIS EGG BITE EGG WHITES	12/2.5 oz
5866	LES TROIS EGG BITE MUSHROOM & SWISS	12/2.5 oz
5891	LES TROIS EGG BITE PROSCIUTTO & GRUYERE	12/2.5 oz
5871	LES TROIS EGG BITE SPINACH & FETA	12/2.5 oz
	<b>MISC GOURMET:SAL di IBIZA PREORDER RECOMMENDED</b>	
2373	IBIZA MILK CHOCOLATE W/ SEA SALT	12/80G
2374	IBIZA WHITE CHOCOLATE W/ SEA SALT	12/80G
62188	IBIZA GRANITO CITRONELA & JENGER	12/100gr
62169	IBIZA FLEUR DE SEL CERAMIC POT 12/28G	12/28G
62187	IBIZA FRANITO GOMASIO	12/75gr
62186	IBIZA GRANITO CON FLORES	12/75gr
2317	CHOCOLATE IBIZA SALT	12/80G
62181	IBIZA FLEUR DE SEL POT 6/150G	6/150G
	<b>MISC GOURMET:VILA VELLA JUICES</b>	
SP385	CLEMENTINE JUICE BIO 12/200 ML	12/6.6 oz
SP365	CLEMENTINE JUICE BIO 6/1 L	6/1 LT
93451	PINEAPPLE JUICE 6/1L (P)	6/1 LITER
93453	APPLE JUICE 6/1L (P)	6/1 LITER
93455	PEAR JUICE 6/1L (P)	6/1 LITER
93457	WHITE GRAPE JUICE BIO 6/1L (P)	6/1 LITER
SP360	LEMONADE BIO 12/200 ML	12/200 ML
SP390	TOMATO JUICE BIO 12/200 ML	12/200 ML
	<b>MUSTARDS: LES TROIS MUSTARDS</b>	
9484	LES TROIS DIJON MUSTARD	6/7 oz
9485	LES TROIS WHOLE GRAIN MUSTARD	6/7 oz

2373



SP365



62113, 62114, 62115, 62116



5866

<b>MUSTARDS: MARTIAL</b>		
MU060	MARTIAL DIJON MUSTARD	6/7OZ
MU070	MARTIAL OLD FASH GRAIN MUSTARD	6/7 OZ
<b>ASIAN SPECIALTY</b>		
89201	TSUKI RAMEN BASE MATSUTAKE	6/500ML
89202	TSUKI RAMEN BASE PORK SHANK	6/500ML
89203	TSUKI RAMEN SCALLOP WH MISO	6/500ML
89204	TSUKI RAMEN SPCY CRAB MISO	6/500ML
BV031	SAKURA CHERRY BLOSSOM SHOYU 6/375 M	6/375 ML
BV028	SMOKED SHOYU 6/375 ML	6/375 ML
BV030	WHISKY BARREL AGED SHOYU 6/375 ML	6/375 ML
74301	HAKU BLACK GARLIC SHOYU 6/500ML	6/500ML
74300	HAKU MATSUTAKE SHOYU 6/500ML	6/500ML
74305	YAKAMI ORCHARDS ALOE MARMALADE	12/200G
BV025	GINGER MARMALADE	12/300 GM
BV008	YUZU MARMALADE RTL	12/300 GM
BV022	GREEN YUZU BANG	12/5 OZ
BV019	YUZU MAYONNAISE RTL	24/290 GM
66182	RED BOAT PHAMILY RESERVE CLASSIC	6/250ML
FM186	RED BOAT FISH SAUCE	6/250 ML
BV029	IWASHI WHISKY BARREL AGED FISH SAUC	6/375 ML
66181	RED BOAT KHO SAUCE	6/11.8OZ
89223	SHIBUMI BLACK GARLIC AIOLI	12/12OZ
89224	SHIBUMI CALAMARI CITRUS JASMINE AIO	12/12OZ
89225	SHIBUMI GOCHIJANG AIOLI	12/12OZ
89226	SHIBUMI JAPANESE TARTAR SAUCE	12/12OZ
89227	SHIBUMI SINGLE MALT AIOLI	12/12OZ
89228	SHIBUMI TONKATOU AIOLI	12/12OZ
BV009	RETAIL PONZU JUICE	6/375 ML
BV006	SUDACHI RTL JUICE	6/375 ML
BV005	YUZU RTL JUICE	6/375 ML
<b>OILS &amp; VINEGARS</b>		
86095	ARVUM CREMA BALSAMICA AL VINEGRE	6/6.4oz
62461	ARVUM GRAN RISERVA SHERRY VINEGAR	6/200ML
62460	AVRUM PEDRO XIMENEZ VINEGAR 6/8.5 OZ	6/8.5 oz
62047	CANENA ARBEQUINA OLIVE OIL	6/500ML
62049	CASTILLO DE CANENA PICUAL OLIVE OIL XV 6/500ml	6/500ml
OS1020	DA MORGADA EV OIL PORTUGAL	6/500 ML
62736	OLIVE OIL EV, NUNEZ DE PRADO TIN 5L (P)	4/5L
62734	OLIVE OIL, EV NUNEZ DE PRADO TIN 1L (P)	12/1L
62770	OLIVE OIL, MERULA TIN 500ML (P)	12/500ML
62011	CASTILLO D.C. PLANKTON ARBEQUINA EV	6/8.4OZ
62012	CASTILLO D.C. BIODYNAMIC PICUAL EVO	6/16.9OZ
62462	VINEGAR - SOTARONI MOSCATEL 6/200ML (P)	6/8.5 oz



**89202**



**OS1020**





	<b>OILS &amp; VINEGARS: OTHER BROTHER</b>	
	ONLY STOCKED ON WEST COAST	
71602	OTHER BROTHER EVOO (ROBUST)	12/375 ML
71603	OTHER BROTHER EVOO (SMOOTH)	12/375 ML
71601	OTHER BROTHER EVOO (SHORTY)	12/250 ML
71606	OTHER BROTHER EVOO (TALLBOY)	12/500 ML
	<b>OILS &amp; VINEGARS: O-MED</b>	
63110	O-MED ARBEQUINA EVOO 1LITER TIN	9/1LITER
63100	O-MED ARBEQUINA EVOO 250 ML TIN	12/250 ML
63104	O-MED ARBEQUINA EVOO 500 ML TIN	9/500 ML
63113	O-MED CABERNET VINEGAR 250ML	9/250ML
63116	O-MED CAVA VINEGAR 250ML	9/250ML
63101	O-MED CHARDONNAY VINEGAR 250 ML	9/250 ML
63105	O-MED CIDER VINEGAR 250 ML	9/250 ML
63102	O-MED MOSCATEL VINEGAR 250 ML	9/250 ML
63114	O-MED ORGANIC EVOO 250 ML TIN	12/250ML
63106	O-MED PICUAL EVOO 250 ML TIN	12/250 ML
63107	O-MED PICUAL EVOO 500 ML TIN	9/500 ML
63103	O-MED ROSE VINEGAR 250 ML	9/250 ML
63115	O-MED ROSE VINEGAR 6/2 LITER	6/2 LITER
63118	O-MED SHERRY VINEGAR 250ML	9/250ML
63112	O-MED SMOKED EVOO 250 ML TIN	9/250ML
63109	O-MED YUZU EVOO 250ML TIN	9/250ML
63117	O-MED YUZU VINEGAR 250ML	9/250ML
	<b>OILS &amp; VINEGARS: MOLINO-Preorder Recommended</b>	
89787	MOLINO SEVILLA MANDARIN OLIVE OIL-P	6/250ML
89788	MOLINO LEMON OLIVE OIL (P)	6/250ML
89789	MOLINO BASIL OLIVE OIL (P)	6/250ML
	<b>OILS &amp; VINEGARS: SALUTE SANTE</b>	
	ONLY STOCKED ON WEST COAST	
89857	SALUTE EV COLD PRESSED GRAPSEED OIL	6/6.76 OZ
89860	SALUTE GRAPSEED OIL GARLIC	6/6.76 OZ
89862	SALUTE GRAPSEED OIL CHILI	6/6.76 OZ
89867	SALUTE GRAPSEED OIL LEMON	6/6.76 OZ
89868	SALUTE GRAPSEED OIL PRO 4/1 GAL	4/1 GAL
89870	SALUTE GRAPSEED OIL ORIGINAL 5L	3/5L
89875	SALUTE WHITE TRUFFLE GRAPSEED OIL	6/200ML
89858	SALUTE BALSAMIC VINEGAR	6/6.76 OZ
89864	SALUTE GRAPSEED OIL 6/17 OZ	6/17 OZ
89856	SALUTE GRAPSEED OIL 6/33 OZ	6/33 OZ
89863	SALUTE GRAPSEED OIL ROSEMARY	6/6.76 OZ

63110



63112



89857



<b>OILS &amp; VINEGARS: SOLERA</b>		
VE560	SOLERA SHERRY VINEGAR 77	12/375 ML
VE415	SOLERA SHERRY VINEGAR RESERVE	9/250ML
<b>OILS &amp; VINEGARS: UNIO</b>		
VE700	UNIO CAB SAUVIGNON VINEGAR	6/17 oz
VE820B	UNIO CABERNET SAUVIGN VINEGAR	6/2L
VE865	UNIO CAVA VINEGAR 6/17 OZ	6/17 oz
VE740	UNIO CHARDONNAY VINEGAR	6/17 oz
VE760	UNIO MOSCATEL VINEGAR	6/17 oz
VE790	Unio Riesling Vinegar	6/17oz
OS1200	UNIO SIURANA EV BOTTLES	12/0.5 LT
OS1210	UNIO SIURANA EV BOTTLES	12/0.75 LT
OS650	UNIO SIURANA EV TINS	10/1 LT
OS1205	UNIO SIURANA ORGANIC	12/0.5 LT
<b>OILS &amp; VINEGARS: ZOE</b>		
OS630	ZOE EX VIRG OLIVE OIL	12/1 LT
OS610	ZOE MINI EXTRA VIRGIN OIL	12/250 ML
OS625	ZOE ORGANIC EV OIL TINS	6/25.5 OZ
<b>OLIVES, TOMATOES, PICKLES &amp; MISC. VEG</b>		
86085	MATIZ ORGANIC PIQUILLO PEPPERS 7.6OZ	12/7.6 oz
86084	MATIZ PIQUILLO PEPPERS 6/5.5	6/5.5#
9381	PEPPADEW MILD JARS	12/14.75 oz
9384	PEPPADEW HOT JARS	12/14.75OZ
62390	PIPARRAS PICKLED PEPPERS (15/6.4OZ)	15/6.4 oz
<b>OLIVES, TOMATOES, PICKLES &amp; MISC. VEG: 3 Pigs</b>		
5819	LES TROIS SWEET MINI PEPPERS	12/4.3 oz
5824	LES TROIS SWEET & SPICY BABY GHERKIN	12/12.4 oz
9487	LES TROIS CORNICHONS BREAD & BUTTER	12/12.4OZ
9480	CORNICHONS JARS, LES TRIOIS PETITS COCHONS	12/12.35 oz
<b>OLIVES, TOMATOES, PICKLES: CAL-VALS ORGANIC</b>		
SP350	TOMATO PASTE ORGANIC	6/8.8 OZ
SP355	TOMATO PUREE ORGANIC	6/14.1 OZ
SP340	TOMATOES ORGANIC PEELED	6/660 GR
<b>OLIVES, TOMATOES, PICKLES: DEQUEMANA</b>		
62554	DEQUEMANA OLIVES GORDAL 8/12OZ	8/7 OZ
62556	DEQUEMANA OLIVES ARBEQUINA 8/12OZ	8/7 OZ
62550	DEQU MANA OLIVES EMPETRE 8/7OZ	8/7 oz
62552	DEQU MANA OLIVES MIXED W/ HERBS 8/7OZ	8/7 oz

**OS1200**



**OS650**



**VE415**



**SP350**



	<b>OLIVES, TOMATOES, PICKLES &amp; MISC. VEG: DIVINA</b>	
96144	DIVINA DELI CUP GREEK MIX OLIVES	6/4.6 OZ
96146	DIVINA DELI CUP BLUE CHEESE STUFFD	6/5.5 OZ
96147	DIVINA DELI CUP FETA STUFFED OLIVES	6/5.5 OZ
96148	DIVINA DELI CUP KALAMATA PITTED	6/4.9 OZ
96151	DIVINA DELI CUP MARINATED FETA/VOLIV	6/5.6 OZ
9716	DIVINA STUFFED GRAPE LEAVES	12/7 oz
96155	DIVINA SNACKS & STARTER PLATTER	12/10.2OZ
9568	DIVINA ROASTED RED PEPPERS	6/13 oz
OL360	DIVINA GREEN OLIVES PITTED ORGANIC	6/6 OZ
9710	DIVINA PITTED KALAMATA OLIVE	6/6 oz
9711	DIVINA GREEK OLIVE MIX	6/6.36 oz
OL365	DIVINA GREEK OLIVE MIX ORGANIC	6/6.4 OZ
9632	DIVINA CASTELVETRANO RETAIL PITTED OLIVES	6/6oz
96198	DIVINA GREEN CRACKED OLIVES (P)	6/7 oz
9709	DIVINA KALAMATA OLIVES	6/7 oz
OL395	KALAMATA PITTED ORGANIC RETA	6/7 OZ
7639	DIVINA ORGANIC KALAMATA RETAIL	6/7.5 OZ
96188	DIVINA GREEN MT ATHOS OLIVE W/ TOMA	6/7.8 oz
9712	DIVINA GREEN STUFFED W/ BLUE CHEESE	6/7.8 oz
9713	DIVINA GREEN STUFFED W/ GARLIC	6/7.8 oz
9714	DIVINA GREEN STUFFED W/ JALAPENO	6/7.8 oz
9715	DIVINA GREEN STUFFED W/ RED PEPPERS	6/7.8 oz
96182	DIVINA GRN MT. ATHOS OLIVE W/ FETA	6/7.8 oz
	<b>OLIVES, TOMATOES, PICKLES &amp; MISC. VEG: FINE CHEESE CO</b>	
95209	FCC PICKLED ONIONS (P)	6/350G
95212	FCC PICKLED WALNUTS (P)	6/310G
95214	FCC PICKLED SHALLOTS (P)	6/350G
	<b>OLIVES, TOMATOES, PICKLES &amp; MISC. VEG:LC</b>	
62980	LC ASPARAGUS IN JARS 12/370G	12/370G
62984	LC HABITAS BABY BEANS IN EVOO 370G	12/370G
62986	LC PIQUILLO PEPPER ARTESANAL 12/260G	12/260G
62988	LC TOMATO NATURAL IN JARS 12/630G	12/630G



9710



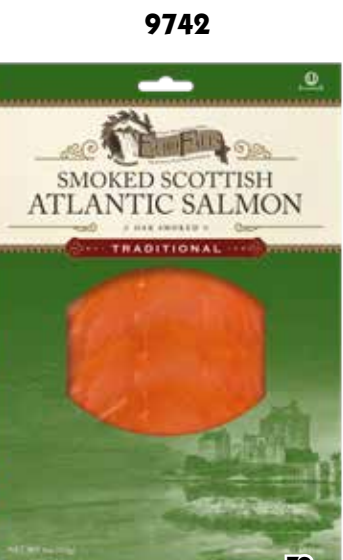
OL395

96144



	<b>OLIVES, TOMATOES, PICKLES &amp; MISC. VEG: LOSADA</b>	
	<b>PREORDER</b>	
89736	LOSADA NAT.3 OLIVE MX PITTED 2000GP	4/2000G
89741	LOSADA NATURAL CORNICABRA OLIVES RTL JAR	8/12 OZ
89743	LOSADA PITTED MIX NAT RTL JAR	8/12 OZ
89746	LOSADA MANZANILLA RETAIL OLIVES	8/12oz
89740	LOSADA CARMONA MIX NATURAL RETAIL JAR	8/12 OZ
89742	LOSADA NATURAL ALORENA PITTED RTL JAR	8/12 OZ
89734	LOSADA MANZANILLA BULK OLIVES	4/2350G
89735	LOSADO ZORZALENA BULK OLIVES	4/2350G
89738	LOSADA NAT CORNICABRA OLIVES BULK	4/2350G
89739	LOSADA NATURAL 3 OLIVE MIX PITTED R	8/12OZ
89744	LOSADA NAT. CRACKED ALORENA OLIVE	4/2350G
89745	LOSADA CARMONA MIX 1 GALLON	4/2350
89747	LOSADA GORDAL PITTED 4/2000G	4/2000G
89748	LOSADA NATURAL ARBEQUINA OLIVE	4/2350G
89749	LOSADA GORDAL WHOLE 4/2350G (P)	4/2350G (P)
89750	LOSADA GORDAL PITTED RETAIL 8/12OZ	8/12OZ
89754	LOSADO CUQUILLO OLIVES 4/1 GALLON	4/1 GALLON
	<b>OLIVES, TOMATOES, PICKLES &amp; MISC. VEG: MCCLURE'S</b>	
	<b>WEST STOCK ONLY</b>	
FL320	MCCLURE'S GARLIC PICKLES	6/32 OZ
FL325	MCCLURE'S SPICY PICKLES	6/32 OZ
FL330	MCCLURE'S BLOODY MARY MIX	6/32 OZ
FL337	MCCLURES SWEET/SPICY PICKLES	6/32 OZ
	<b>OLIVES, TOMATOES, PICKLES &amp; MISC. VEG: MOTHER IN LAW'S</b>	
89423	HOUSE NAPA CABBAGE KIMCHI	6/16 OZ
89438	MIL GARLIC CHILE SAUCE 03	6/9 OZ
89417	MIL MUU DAIKON RADISH KIMCHI	6/16 OZ
89437	MIL ORIGINAL CHILE PASTE 00	6/10 OZ
89435	MIL SESAME CHILE SAUCE 02	6/9 OZ
89436	MIL TANGY CHILE SAUCE 01	6/9 OZ
89424	VEGAN NAPA CABBAGE KIMCHI	6/16 OZ
89419	WHITE NAPA CABBAGE KIMCHI	6/16 OZ
	<b>OLIVES, TOMATOES, PICKLES &amp; MISC. VEG: SALT &amp; SAVOUR</b>	
89539	S AND S SAUERKRAUT WITH CARAWAY	6/16 OZ
89540	S AND S SAUERKRAUT WITH HORSERADISH	6/16 OZ
89541	S AND S RED CABBAGE AND GINGER SAUE	6/16 OZ
89542	S AND S GARLIC DILL SAUERKRAUT	6/16 OZ
89543	S AND S APPLE GINGER SAUERKRAUT	6/16 OZ
89544	S AND S SAUERKRAUT CA FIRE SEASON	6/16 OZ

	<b>SEAFOOD</b>	
62495	ANCHOVIES OIL, GRAN COST 10/1.76OZ	10/1.76 oz
62040	ANCHOVIES IN TINS 1.76oz (P)	50/1.76 oz
62042	ARROYABE BONITO JARS 12/6.5OZ	12/6.5 oz
62044	ARROYABE BONITO OVAL TINS 16/4OZ	16/4 oz
62020	BOQUERONES ANCHOVIES WHITE 3.5OZ	10/3.5 oz
62010	BOQUERONES ANCHOVIES WHITE 500G	6/500G
	<b>SEAFOOD: ABBA</b>	
2022	HERRING MARINATED, ABBA	10/9.7 oz
2020	HERRING WITH DILL, ABBA	10/9.7 oz
2023	HERRING WITH MUSTARD, ABBA	10/9.7 oz
2037	SALMON, ABBA	8/5.3 oz
	<b>SEAFOOD: DA MORGADA</b>	
62866	DA MORGADA CANTARA ROASTED COD 24/120G (P)	24/120G
62886	DA MORGADA MACKEREL IN EVO	10/125G
62882	DA MORGADA MACKEREL PIRI PIRI 10/90G	10/90G
62859	DA MORGADA MUSSELS IN ESCABECHE (P)	60/120G
62899	DA MORGADA OCTOPUS 10/118G	10/118G
62792	DA MORGADA OCTOPUS IN EVO 84/118G-P	84/118G
FM995	DA MORGADA SARDINE SKINLESS BONELES	12/105 G
62880	DA MORGADA SARDINES IN EV OIL	12/125G
62885	DA MORGADA SARDINES IN TOMATO SAUCE	10/200G
62883	DA MORGADA SARDINES SPICY IN EV OIL	12/125G
62872	DA MORGADA SMALL SARDINES 90G (P)	64/90G
62889	DA MORGADA SMOKED EEL	10/105G
62888	DA MORGADA SMOKED MACKEREL	10/125G
62887	DA MORGADA SMOKED TROUT	10/105G
62791	DA MORGADA SMOKED TROUT 25/105G (P)	25/105G
62895	DA MORGADA STUFFED SQUID 10/115G	10/115G
62861	DA MORGADA TUNA LOINS 10/125G	10/125G
62893	DA MORGADA VENTRESCA TUNA 10/125G	10/125G
	<b>SEAFOOD: ECHO FALLS</b>	
9742	ECHO FALLS PRESLIC SCOTTISH SALMON	12/4 oz
9743	ECHO FALLS PRESLICED SOCKEYE	12/4 oz
5930	ECHO FALLS SALMON CAVIAR	6/2 oz
9747	ECHO FALLS SMOKED CAJUN	12/4 oz
9745	ECHO FALLS SMOKED PEPPER	12/4 oz
9744	ECHO FALLS SMOKED TRAD ALDERWOOD	12/4 oz
5931	ECHO FALLS WHITEFISH CAVIAR	6/2 oz



	<b>SEAFOOD: KRINOS</b>	
9692	KRINOS TARAMOSALATA	12/8.5oz
9691	KRINOS TARAMOSALATA LITE	12/8oz
	<b>SEAFOOD: LA BRUJULA</b>	
89727	LA BRUJULA COCKLES 14/119G (P)	14/119G(P)
89721	LA BRUJULA CONSERVAS MUSSELS IN ESC	15/115G
89723	LA BRUJULA CONSERVAS OCTOPUS W/ PIM	12/130G
89722	LA BRUJULA CONSERVAS SARDINILLAS	15/118G
89720	LA BRUJULA CONSERVAS YELLOWTAIL VEN	15/116G
89717	LA BRUJULA FRIED SARDINES IN SAUCE	12/4.6OZ
89731	LA BRUJULA MACKEREL FILLETS 15/115	15/115g
89725	LA BRUJULA RAZOR SHELLS 15/115G	15/115G
89715	LA BRUJULA SCALLOPS IN SAUCE 15/110	15/110G
89714	LA BRUJULA SARDINE 3/4CUT OLIVE OIL	15/4OZ (P)
89716	LA BRUJULA SEA URCHIN ROE 15/110G	15/110G
89726	LA BRUJULA SQUID IN INK 15/115G	15/115G
89724	LA BRUJULA SQUID IN OLIVE OIL 115G	15/115G
89718	LA BRUJULA YELLOW VENTRESCA TUNA(P)	15/116G
89719	LA BRUJULA ZAMBURINA SCALLOPS (P)	15/115G
	<b>SEAFOOD: MATIZ</b>	
62091	MATIZ BERBERECHOS COCKLE SHELLS 4oz	12/4 oz
62490	MATIZ PULPO (OCTOPUS) IN TIN 25/4.2OZ	12/4.2 oz
62411	MATIZ SARDINES IN OIL 25/4.2OZ	12/4.2 oz
62415	MATIZ SARDINES W/ LEMON (25/4.2OZ)	12/4.2 oz
62409	MATIZ SARDINES IN OIL 25/4.2OZ	25/4.2 OZ
62491	MATIZ GALLEGO MUSSELS 12/4OZ (P)	12/4OZ
62418	MATIZ SARDINILLAS WITH PIQUILLO 3OZ	12/3 oz
	<b>SEAFOOD: SPENCE &amp; CO.</b>	
9694	SPENCE LOX IN A BOX W/ CREAM CHEESE	5/4 oz
9698	SPENCE NOVA STYLE SALMON	6/4 oz
9697	SPENCE SCOTTISH STYLE SALMON	6/4 oz
9699	SPENCE SMOKED SALMON PINWHEELS	5/4 oz
9682	SPENCE WILD SOCKEYE	6/4 oz

9692



89727



9697



62409



DESDE  
1891  
CONSERVAS  
**ORTIZ**

Caught during the coastal fishing season using traditional fishing methods, Ortiz's anchovies are classified by size and their heads removed. They are then placed in salt, pressed, and left to mature in barrels. The length of time that they are left to mature in the storeroom is one of the factors which affect the intensity of flavour and texture of the anchovies. Their anchovies are matured for at least six months. Once they reach the required maturity, they are hand-filleted and packed in olive oil.

- SP1430 Ortiz Boquerones White Anchovies 12/110g**
- FL660 Ortiz Anchovies In Salt Retail 12/120g**
- FL645 Ortiz Anchovy Fillet Jars 15/95g**
- FL650 Ortiz Anchovy Fillet Old Style Jars 15/95g**
- FL655 Ortiz Anchovy Fillets Tins 5/10/47.5g**
- FL635 Ortiz Anchovy Fillets 6/15.8oz**

Ortiz White tuna is individually line caught with live bait or fly during the coastal fishing season. This age-old technique of selective fishing (which also avoids unwanted fish being discarded) respects the environment and protects marine reserves. They prepare their White tuna in an entirely artisanal way. It offers an exquisite flavour and delicate texture for the palate.

- FL825 Ortiz Bonito del Norte Reserve Jars 12/270g**
- FL855 Ortiz Bonito del Norte Reserve Tins 24/112g**
- FL840 Ortiz Bonito del Norte in Olive Oil Oval Tin 8/12/112g**
- FL820 Ortiz Bonito del Norte In Olive Oil Jar 12/220g**
- FL800 Ortiz Bonito del Norte In Olive Oil Tin Large 8/1825g**
- FL835B Ortiz Bonito del Norte In Olive Tins Small 5/10/92g**
- FL830 Ortiz Bonito del Norte Tins Retail 5/6/250g**
- 62271 Ortiz White Tuna with Esplelette (Pre-Order Only) 12/7.76oz**

For more than 100 years and through five generations Conserva Ortiz has perfected their techniques in order to achieve greater quality in full respect of tradition. Their craft techniques ensure that the fish that are caught do not suffer, which improves the flavor and texture of our product. The Ortiz Sardines are elaborated with fresh fish. They are cleaned by hand one by one and fried in olive oil following a traditional recipe. Sardines improve their taste over the years, making them taste unctuous and delicate.

**FL880 Ortiz Old Style Sardines in Jar 12/190g.**

Ortiz's experience and skill in the art of marrying yellowfin tuna and olive oil produce a very tender and tasty tuna loin, packed by hand in whole pieces. Ideal for preparing tasty salads.

- FL845 Ortiz Yellow Fin Tuna Jars Kosher 12/220g**
- FL865 Ortiz Yellow Fin Organic Oil Tin 24/112g**

**FL860  
Ortiz Pimientos Rellenos Stuffed W/ Tuna  
12/300g**



**FL850  
Ortiz Ventresca Tuna Tins  
5/10/110g**



SP1430



FL825



FL880



FL855



FL840

<b>SPECIALTY MEATS &amp; PATE</b>		
6409	DON JUAN SERRANO PRESLICED	10/3 oz
61510	FERMIN CHORIZO 10/7 OZ	10/7 oz
6398	PROSCIUTTO PARMA FONTANA SLICED	10/3 oz
6415	USINGERS SUMMER SAUSAGE 12/8oz	12/8 oz
<b>SPECIALTY MEATS &amp; PATE: ALEXIAN</b>		
90662	ALEXIAN DUCK RILLETE 6/6.25OZ	6/6.25 OZ
90661	ALEXIAN GOOSE LIVER MOUSSE 6/5OZ	6/5 oz
9110	ALEXIAN SLICED BLACK PEPPER MOUSSE 5OZ	6/5 oz
90648	ALEXIAN SLICED CAMPAGNE PATE 5OZ	6/5 oz
9112	ALEXIAN SLICED CHICKEN LIVER MOUSSE 5OZ	6/5 oz
90657	ALEXIAN SLICED DUCK W/ COGNAC 5OZ	6/5 oz
90665	ALEXIAN SLICED MIXED VEGETABLE PATE 5OZ	6/5 oz
90660	ALEXIAN SLICED MOUSSE TRUFFLE 5OZ	6/5 oz
9068	ALEXIAN SLICED PHEASANT/ ROSEMARY	6/5 oz
9116	ALEXIAN WILD FOREST MUSHROOM 5OZ	6/5 oz
<b>SPECIALTY MEATS &amp; PATE: BALLENTANI</b>		
6345	BELLENTANI COUNTER TOP SALAMI CHUBS	24/7 oz
6348	BELLENTANI SLICED PROSCIUTTO	12/3 oz
6347	BELLENTANI SLICED RUSTIC TUSCAN HRB	12/6 oz
6346	BELLENTANI SLICED SOPRESSATA	12/4 oz

9699



9694



6345



8238

6348

65150



6409



90648



9116





# Brooklyn Cured

- 8210 Brooklyn Cured Presliced Spicy Beef
- 8211 Brooklyn Cured Presliced Sweet Soppressa
- 8216 Brooklyn Cured Presliced Chorizo
- 8217 Brooklyn Cured Presliced Finocchiniona
- 8245 Brooklyn Cured Tuscan Red Wine Beef Salami

**Above Group: 12/3oz**



- 8214 Brooklyn Cured Pre-Sliced Smoked Beef Salami
- 8215 Brooklyn Cured Pre-Sliced Hot Sopressata
- 8225 Brooklyn Cured Bourbon & Cherry Chub
- 8226 Brooklyn Cured Belgian Ale & Lemon Zest
- 8227 Brooklyn Cured Rye Whiskey & Orange
- 8228 Brooklyn Cured Mezcal & Lime

**Above Group: 12/5oz**



- 8212 Brooklyn Cured Lamb Merguez Sausage
- 8235 Brooklyn Cured Italian Wedding Sausage
- 8236 Brooklyn Cured Black Truffle Sausag
- 8237 Brooklyn Cured Hot Chicken Sausage
- 8246 Brooklyn Cured Korean Bbq Sausage

**Above Group: 8/10oz**



- 8221 Brooklyn Cured Beef Kielbasa
- 8222 Brooklyn Cured Andouille Sausage
- 8223 Brooklyn Cured Bratwurst
- 8224 Brooklyn Cured Duck Fennel Sausage
- 8229 Brooklyn Cured NY Style Hot Dogs
- 8238 Brooklyn Cured Chicken Garlic Sausage

**Above Group: 8/12oz**



- 8218 Brooklyn Cured Breakfast Links - 8/9oz

- 8234 Brooklyn Cured Presliced Spicy Bresaola
- 8239 Brooklyn Cured Presliced Bresaola

**Above Group: 12/2oz**



## Their Story

Brooklyn Cured makes artisanal charcuterie using sustainable meat and fine-dining technique. Their product line includes salami, dry-cured meats, sausages, hot dogs, and deli meats using pasture-raised meat with **no antibiotics**.

Their diverse flavor profiles are inspired by the multitude of culinary traditions in their home borough of Brooklyn, New York.

## Their Mission

Their mission is to create a larger market for sustainably raised meat by making delicious charcuterie that people enjoy and share with friends and family. They source heritage meats raised by farmers that practice regenerative agriculture.

<b>SPECIALTY MEATS &amp; PATE: BUSSETO</b>		
6330	BUSSETO ANTIPASTO PACK SLICED	10/12 oz
6331	BUSSETO SALAMI VARIETY PK SLICED	10/12 oz
6299	BUSSETO NUGGET BITE SIZE SALAMI CUP	12/1OZ 4PK
6323	BUSSETO SLICED GENOA	12/3 oz
6329	BUSSETO SLICED PANCETTA	12/3 oz
6321	BUSSETO SLICED PROSCIUTTO	12/3 oz
6325	BUSSETO DICED PANCETTA	12/5 oz
6314	BUSSETO ASSORTED SALAMI SLICED	12/8 oz
6334	BUSSETO BLACK TRUFFLE NUGGETS	12/8 oz
6337	BUSSETO CHORIZO NUGGETS	12/8 oz
6311	BUSSETO ITALIAN DRY PEPPER SLICED	12/8 oz
6338	BUSSETO ITALIAN PLAIN SLICED	12/8 oz
6326	BUSSETO MINI CHARCUTERIE 12/3.5OZ	12/3.5OZ
6300	BUSSETO SALAMI NUGGETS	12/8 oz
6336	BUSSETO ARTISAN SALAMI CON VINO CHB	15/7 OZ
6335	BUSSETO ARTISAN SALAMI GENTILE CHUB	15/7 OZ
6312	BUSSETO ASSORTED CHUBS	15/8 oz
6301	BUSSETO HERB COATED CHUB	15/8 oz
6309	BUSSETO HOT SOPRESSATA CHUB	15/8 oz
6303	BUSSETO PEPPER COATED CHUB	15/8 oz
6313	BUSSETO SOPRESSATA CHUB	15/8 oz
<b>SPECIALTY MEATS &amp; PATE: CHARLITO'S</b>		
64607	CHARLITOS CAMPO SECO UNCURED STICKS	4/18STICKS
64608	CHARLITOS CHORIZO SECO UNCURED STIC	4/18STICKS
64598	CHARLITO'S SOBRASADA 5OZ	15/5 OZ
64725	CHARLITO CERVEZA SECA DRY BEER SALA	16/5OZ
64724	CHARLITO CAMPO SECO DRY CNTRY SALAM	16/5 oz
64711	CHARLITO TRUFA SECA BLACK TRUFFLE	16/5 oz
64576	CHARLITO'S CAMPO SECO SLC DRY CNTRY	15/3 oz
64577	CHARLITO'S CERVA SECA SLC DRY CURED	15/3 oz
64592	CHARLITO'S CHORIZO SECO DRY CURED M	16/5 oz
64578	CHARLITO'S CHORIZO SECO SLC DRY CRD	15/3 oz
64593	CHARLITO'S SALAMI PICANTE DRY CURED	16/5 oz
64579	CHARLITO'S SALAMI PICANTE SLC DRY	15/3 oz
64609	CHARLITO'S TRUFFLE SLICED DRY CURED	15/3 oz

**6330**



**6325**



**64711**



**64607**



<b>SPECIALTY MEATS &amp; PATE: ESTI PLANT BASED MEATS</b>		
3590	ESTI PLANT BASED VEGAN BURGER	8/7.8 oz
3591	ESTI PLANT BASED VEGAN MEATBALLS	6/7.9 oz
<b>SPECIALTY MEATS &amp; PATE: FABRIQUE DELICES</b>		
US5017B	FD ANDOUILLETTE S.O.	10/1 LB
US5038B	FD BOUDIN BLANC 4 LINKS S.O.	10/1 LB
US6013	FD BOUDIN NOIR - BLOOD SAUSAGE S.O.	10/1 LB
US5082B	FD DUCK SAUSAGE W/FIG S.O.	10/1 LB
US5014B	FD TOULOUSE SAUSAGE 4 LINKS S.O.	10/1 LB
US5035B	FD VENISON SAUSAGE W/CRANBERRY S.O,	10/1 LB
US5040B	FD WILD BOAR SAUSAGE W/APPLES S.O.	10/1 LB
US5081B	FD CHORIZO 4 LINKS S.O.	10/1 LB PK
US5009	FD DUCK PROSCIUTTO SLICED	10/2 OZ
US5042B	FD RTL CHORIZO DE ESPANA	10/8 OZ
US5070B	FD GARLIC SAUSAGE S.O.	12/1.5 LB
US6003	FD CORNICHONS RTL	12/11 OZ
6387	FD DUCK FAT IN GLASS JAR	12/11.28OZ
US5039B	FD BISTRO SAUSAUGE/CHIPOLATA	12/12 OZ
US5099	FD DUCK & PORK PATE W/ ORANGE (P)	12/2.8 OZ
US6000	FD DUCK RILLETES IN GLASS JAR	12/2.8 OZ
6383	FD FLATBREAD CRACKERS ORGANIC12/4OZ	12/4 OZ
US5021B	FD MERGUEZ LAMB SAUSAGE	12/6/2 OZ
US5053	FD BLK WINTER TRUFFLE BUTTER S.O.	4/16 OZ
US5004B	FD SMOKED WHOLE DUCK BREAST S.O.	6/1 LB
6386	FD DUCK PROS SINGLE BREAST DRY CURE	6/12 OZ
US5075B	FD GARLIC SAUSAGE S.O.	6/12 OZ
US5049B	FD SMOKED HALF DUCK BREAST	6/4 OZ
US5033	FD DUCK LEG CONFIT S.O.	6/7 OZ
US5012	FD RTL COUNTRY PATE W/BLK PEPPER	6/7 OZ
US5020	FD RTL DUCK MOUSSE W/PORT NO PORK	6/7 OZ
US5062	FD RTL RENDERED DUCK FAT	6/7 OZ
US5006	FD RTL RILLETES DE PORC S.O.	6/7 OZ
US5010	FD RTL RILLETES DU PERIGORD	6/7 OZ
US5025	FD RTL SMK SALMON & SPIN MOUSSE	6/7 OZ
US5015	FD RTL TRUFFLE MOUSSE NO PORK	6/7 OZ
US5097B	FD ROSETTE DE LYON	8/10 OZ
US5023B	FD SAUCISSON SEC	8/12 OZ
US5051	FD RTL BLK WINTER TRUFFLE BUTTER	8/3 OZ
US5074	FD RTL WHITE TRUFFLE BUTTER	8/3 OZ

**3590**



**3591**



**US5033**



**US5051**

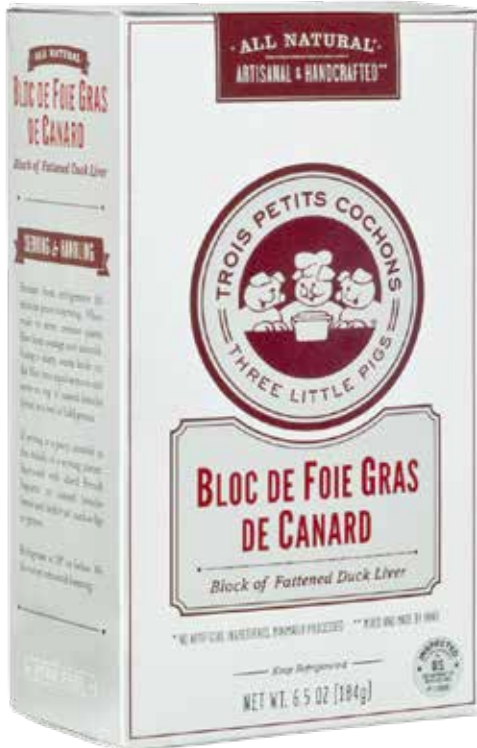


	<b>SPECIALTY MEATS &amp; PATE:FERMIN</b>	
61517	FERMIN IBERICO SALCHICHON PRESLICED	15/2 OZ
61512	FERMIN SALCHICHON 10/7 OZ	10/7 OZ
61522	FERMIN IBERICO ACORN FED CHORIZO 7O	10/7OZ
62925	FERMIN IBERICO DE BELLOTA LOIN PRES	15/2 OZ
62923	FERMIN JAMON IBERICO BELLOTA SLICED	15/2 OZ
62924	FERMIN IBERICO HAM SLICED	15/2 OZ
	<b>SPECIALTY MEATS &amp; PATE: FRA'MANI</b>	
6554	FRA' MANI SALAMETTO PICCANTE 11OZ	10/11 OZ
6568	FRA' MANI SALAMETTO 10/11OZ	10/11 OZ
6566	FRA' MANI CLASSIC ITALIAN SAUSAGE	8/12 OZ
6542	FRA' MANI SLICED PEPPERONI 12/3OZ	12/3OZ
6541	FRA' MANI SLICED ITALIAN DRY SALAME	12/3 OZ
6540	FRA' MANI SLICED SALAME TOSCANO	12/3 OZ
	<b>SPECIALTY MEATS &amp; PATE: GILBERT &amp; BERNARD</b>	
8243	GILBERT & BERNARD BLACK TRUFFLE PATE	6/7OZ
8242	GILBERT & BERNARD PATE DE CAMPAGNE POR	6/7OZ
8241	GILBERT & BERNARD PINK PEPPERCORN PATE	6/7OZ
8240	GILBERT & BERNARD WILD MUSHROOM PATE	6/7OZ
8248	GILBERT&BERNARD MOUSSE W/ COGNAC	6/7OZ
8247	GILBERT&BERNARD WHITE TRUFFLE MOUSS	6/7OZ
	<b>SPECIALTY MEATS &amp; PATE: LA QUERCIA</b>	
89660	LA QUERCIA SALAMI AMERICANO- PRESLC	12/3 OZ
89651	LA QUERCIA SLICED ROLLED PANCETTA	12/2 oz
89657	LA QUERCIA SLICED SPECK AMERCIANO	12/2 oz
89655	LA QUERCIA SLICED PROSCIUTTO AMERICANA	12/3 oz
89676	LA QUERCIA NDUJA SPICY PRO.SPRD 4OZ	12/4 oz
89662	LA QUERCIA NDUJA SPICY PROSC SPREAD	6/1#
89658	LA QUERCIA BORSELLINO SALAMI 6OZ	8/6 OZ
89674	LA QUERCIA GROUND PANCETTA 12/4OZ	12/4OZ (P)
89675	LA QUERCIA PESTO BIANCO- LARDO SPRD	12/4OZ (P)
	<b>SPECIALTY MEATS &amp; PATE: LES TROIS PETITS COCHONS</b>	
5929	LES TROIS SLICED ROSEMARY HAM	12/6OZ
5899	LES TROIS SLICED HONEY HAM	12/6OZ
5901	LES TROIS JAMBON DE PARIS PRESLICED	12/6 oz
90976	LES TROIS SLICED JAMBON SEC 12/3 OZ	12/3 oz
90977	LES TROIS SLC SAUCISSON SEC HERBES	12/4 oz
90975	LES TROIS SLICED CHORIZO 12/4 OZ	12/4 oz
90979	LES TROIS SLICED SAUCISSON SEC 4OZ	12/4 oz
5893	LES TROIS CHORIZO SALAMI	12/8 oz
5884	LES TROIS SAUCISSON SEC W/ HERBS	12/8 oz
5885	LES TROIS SAUCISSON SEC	12/8oz
5837	LES TROIS SMOKED DUCK BREAST	6/10oz
5918	LES TROIS RENDERED DUCK FAT 6/6OZ	6/6 oz



5872	LES TROIS MINI TERRINE DE SAUMON	6/6.5 oz
5870	LES TROIS MINI VEGAN TERRINE	6/6.5 oz
5874	LES TROIS MINI FOIE GRAS BLOC (P)	6/6.5oz (P)
5862	LES TROIS DUCK RILLETTES (P)	6/7 oz
5853	LES TROIS MINI CANARD AU PORTO	6/8 oz
5854	LES TROIS MINI CROCK MOUSSE ROYALE	6/8 oz
5852	LES TROIS MINI CROCK MOUSSE TRUFFEE	6/8 oz
5851	LES TROIS MINI CROCK PATE CAMPAGNE	6/8 oz
5858	LES TROIS MINI DUCK MOUSSE FOIE GR	6/8 oz
90328	LES TROIS MINI MOUSSE PERIGORD	6/8 oz
5924	LES TROIS DUCK LEG CONFIT 6/8.5OZ	6/8.5 oz
90325	LES TROIS ORGANIC PATE DE CAMPAGNE	8/4 oz
5904	LES TROIS ORGANIC MOUSSE TRUFFEE	8/4oz
5892	LES TROIS GRAND-MERE SLICES	8/5.5 oz
5879	LES TROIS MOUSSE CANARD SLICES	8/5.5 oz
6481	LES TROIS PATE AUX CHAMPIGNON SLICE	8/5.5 oz
90960	LES TROIS MOUSSE TRUFFE SLICES 8/5.	8/5.5oz
5898	LES TROIS CHICKEN ANDOUILLE SAUSAGE	10/10 oz
5883	LES TROIS MERGUEZ SAUSAGE	10/10 oz
5896	LES TROIS SMOKED CHICKEN W/ APPLE	10/10 oz
	<b>SPECIALTY MEATS &amp; PATE: MOLINARI</b>	
ME010	MOLINARI DRY SALAME (CHUB)	24/13 oz
89615	MOLINARI DRY SALAME V2	8/4#
ME045	MOLINARI MINI FINOCCHIONA PICCOLOCI	10/10/1.5
89828	MOLINARI PEPPERONI PICCOLOCINO	10/10-1.5
89832	MOLINARI PEPPERONI STICKS 24/8 OZ	24/8 oz

5874



5879



5870



5851



90325



89832



<b>SPECIALTY MEATS &amp; PATE: OLLI SALUMERIA AMERICANA</b>		
89359	OLLI GENOA SLICED CHUB MINI 1.5 OZ	30/1.5 OZ
89290	OLLI ANTIPASTO TRAY PARM/GENOA/SOPR	8/12OZ
89338	OLLI TARTUFO TRUFFLE ABF SALAMI CHUB 12/6OZ	12/5 oz
89360	OLLI CALABRESE ABF SALAMI CHUB 12/6OZ	12/6 oz
89362	OLLI GENOA ABF SALAMI CHUB 12/6OZ	12/6 oz
89363	OLLI NAPOLI ABF SALAMI CHUB 12/6 OZ	12/6 oz
89366	OLLI SOPRESSATA ABF SALAMI CHUB 12/6OZ	12/6 oz
89364	OLLI TOSCANO ABF SALAMI CHUB 12/6OZ	12/6 oz
89365	OLLI WILD BOAR ABF SALAMI CHUB 12/6OZ	12/6 oz
89325	OLLI CALABRESE ASIAGO CRACKER SNACK TRAY	20/2 oz
89326	OLLI GENOA FONTINA CRACKER SNACK TRAY	20/2 oz
89346	OLLI PRESLICED CALABRESE SALAME	20/4.5 oz
89348	OLLI PRESLICED NAPOLI SALAME	20/4.5 oz
89347	OLLI PRESLICED TOSCANO SALAME	20/4.5 oz
<b>SPECIALTY MEATS &amp; PATE: PALACIOS</b>		
6341	CHORIZO, PALACIOS HOT	14/7.9 oz
6340	CHORIZO, PALACIOS MILD	14/7.9 oz
ME1040	PALACIOS CHORIZO 4 PC PACK	16/6.5 oz
6344	PALACIOS PRE-SLICED HOT CHORIZO	12/3.5 oz
6343	PALACIOS PRE-SLICED MILD CHORIZO	12/3.5 oz
<b>SPECIALTY MEATS &amp; PATE: PETER LUGER</b>		
4311	PETER LUGER EXTRA THICK CUT BACON	16/12 oz
4310	PETER LUGER STEAKSAUCE	12/12.6 oz
<b>SPECIALTY MEATS &amp; PÂTÉ: SINGING PASTURES</b>		
<b>WEST STOCK ONLY</b>		
72950	SINGING PASTURES UNCURED BACON	12/12/12OZ
72951	SINGING PASTURES STICKS PINEAPPLE	12/12/12OZ
72952	SINGING PASTURES STICKS JALAPENO	12/12/12OZ
<b>SPECIALTY MEATS &amp; PATE: VERONI</b>		
6448	VERONI ITALIAN MORTADELLA PRESLICED	10/3 oz
6447	VERONI PROSCUITTO ITALIANO PRESLICED	10/3 oz



**89290**



**4310**



<b>SPECIALTY MEATS &amp; PATE: OLYMPIA (PRE-ORDER)</b>		
69584	OLYMPIA BRATWURST RETAIL (P)	6/12 oz
69586	OLYMPIA BREAKFAST SAUSAGE RETAIL	6/12 oz
69530	OLYMPIA CACCIATORE	15/4.5 oz
69533	OLYMPIA CHORIZO ANDALUCIA	15/4.5 oz
69545	OLYMPIA CHORIZO NAVARRE	15/4.5 oz
69534	OLYMPIA CHORIZO RIOJA	15/4.5 oz
69556	OLYMPIA EURO SAMPLER SALAMI 15/4.5 OZ	15/4.5 oz
69531	OLYMPIA FINOCCHIONA	15/4.5 oz
69566	OLYMPIA FLACO PACO 30/1.7 OZ (P)	30/1.7 oz
69588	OLYMPIA FRANKFURTER RETAIL	6/12 oz
69596	OLYMPIA GREEN PEPPERCORN PATE 6/8OZ	6/8 oz
69548	OLYMPIA HOLIDAY KIELBASA 6/16OZ (P)	6/16 oz
69589	OLYMPIA ITALIAN SAUSAGE RETAIL	6/12 oz
69590	OLYMPIA KASEKRAINER RETAIL	6/12 oz
69585	OLYMPIA KIELBASA RETAIL	6/12 oz
69567	OLYMPIA KLEINE SCHWEINE 30/1.7 OZ	30/1.7 oz
69537	OLYMPIA LOUKANIKA	15/4.5 oz
69568	OLYMPIA MIXED PEPPERETTES 30/1.7 OZ	30/1.7 oz
69544	OLYMPIA NOLA	15/4.5 oz
69569	OLYMPIA PETITE PIERRE 30/1.7 OZ (P)	30/1.7 oz
69553	OLYMPIA PORK & HAZELNUT PATE RETAIL	6/8 oz
69540	OLYMPIA PORK LIVER MOUSSE RTL	6/8 oz
69541	OLYMPIA PORK PISTACHIO PATE RTL (P)	6/8 oz
69542	OLYMPIA PORK RILLETTE RTL (P)	6/8 oz
69546	OLYMPIA SALCHICHON	15/4.5 oz
69571	OLYMPIA SAUCISSON AUX NOISETTES	15/4.2 oz
69547	OLYMPIA SAUCISSON D ALSACE (P)	15/4.5 oz
69536	OLYMPIA SAUCISSON D ARLES	15/4.5 oz
69535	OLYMPIA SAUCISSON SEC	15/4.5 oz
69587	OLYMPIA SMOKED CHORIZO RETAIL (P)	6/12 oz
69532	OLYMPIA SOPPRESSATTA (P)	15/4.5 oz
69591	OLYMPIA SUMMER SAUSAGE	10/12 oz
69595	OLYMPIA SUMMER SAUSAGE FOOTBALLS	10/16 oz

**69584**



**69530**



**69591**



**69542**



**69537**



**69553**

	<b>SPECIALTY YOGURT: BELLWETHER</b>	
74053	BELLWETHER SHEEP YOGURT BLACKBERRY	12/6 oz
74054	BELLWETHER SHEEP YOGURT PLAIN	12/6 oz
74056	BELLWETHER SHEEP YOGURT STRAWBERRY	12/6 oz
74055	BELLWETHER SHEEP YOGURT VANILLA	12/6 oz
	<b>SPECIALTY YOGURT: ESTI YOGURT</b>	
3652	ESTI 0% BLUBERRY YOGURT	12/5.3OZ
3653	ESTI 0% CHERRY YOGURT	12/5.3 OZ
3410	ESTI 0% COFFEE YOGURT	12/5.3OZ
3408	ESTI 0% PLAIN YOGURT (P)	12/5.3OZ
3651	ESTI 0% PLAIN YOGURT 32OZ (P)	6/32 OZ
3409	ESTI 0% STRAWBERRY YOGURT	12/5.3OZ
3654	ESTI 0% VANILLA YOGURT	12/5.3 OZ
3647	ESTI 2% PLAIN YOGURT	12/5.3 OZ
3642	ESTI WHOLEMILK BLUEBERRY YOGURT	12/5.3 OZ
3644	ESTI WHOLEMILK CHERRY YOGURT	12/5.3 OZ
3407	ESTI WHOLEMILK PLAIN YOGURT	12/5.3OZ
3641	ESTI WHOLEMILK PLAIN YOGURT 32OZ	6/32 OZ
3643	ESTI WHOLEMILK STRAWBERRY YOGURT	12/5.3 OZ
3645	ESTI WHOLEMILK VANILLA YOGURT	12/5.3 OZ
	<b>SPECIALTY YOGURT: ST BENOIT</b>	
63700	ST. BENOIT STRAWBERRY YOGURT 4.75OZ	9/4.75 OZ
63701	ST. BENOIT MEYER LEMON YOGURT4.75OZ	9/4.75 OZ
63702	ST. BENOIT FR VANILLA YOGURT 4.75OZ	9/4.75 OZ
63703	ST. BENOIT PLAIN YOGURT 4.75OZ	9/4.75 OZ
63710	ST BENOIT ORGANIC SLTD CARAMEL POT	8/3.5OZ
63711	ST BENOIT ORGANIC SNICKERDOODLE POT	8/3.5OZ
63712	ST BENOIT ORGANIC VANILLA POT DE CR	8/3.5OZ
63713	ST BENOIT ORGANIC TCHO CHOCOLATE	8/3.5OZ
	<b>SPREADS &amp; DIPS: CEDARS</b>	
3280	CEDARS PRESERV. FREE TZATZIKI DIP	8/12 oz
3281	CEDARS SPINACH DIP	8/12 oz
	<b>SPREADS &amp; DIPS: CIBO</b>	
3186	CIBO ARTICHOKE LEMON PESTO	12/6 oz
3185	CIBO BASIL PESTO	12/6 oz
	<b>SPREADS &amp; DIPS: CORINNE'S</b>	
3156	CORINNE'S DIP HORSERADISH	6/8 oz
3158	CORINNE'S DIP ONION	6/8 oz
3160	CORINNE'S DIP RST PEPPER/GARLIC	6/8 oz
3159	CORINNE'S DIP SD TOMATO/PESTO	6/8 oz
3157	CORINNE'S DIP SPINACH	6/8 oz

74053



3642



63712



3157



63770





# CHRIS' HERITAGE DIPS

## Chris' Foods Heritage Range

Made with Premium Cheeses & 'Ready To Serve' in Reusable Terracotta Pots.



Chris' newest range of pesto-styled dips in premium navy terracotta pots - perfect for premium entertaining in the summertime. Designed to bring family and friends back together.



### Chris' Heritage

- 4281 Vintage Cheddar & Caramelised Onion Dip
- 4282 Blue Cheese, Fig, & Pistachio Dip
- 4283 Goat Cheese & Black Truffle Dip
- 4284 Vintage Cheddar & Jalapeno Dip

### Chris' Deli Line

- 4285 Chris Deli Line Red Pepper, Cashew, Pecorino
- 4286 Chris Deli Line Basil, Parm & Cashew
- 4287 Chris Deli Line Sun Dried Tomato, Cashew & Feta

All Above 6/6oz

# DI BRUNO'S



Made with real cheese and gourmet mix-ins, DB Signature cheese spreads are every bit as delicious as they are innovative. There is a flavor for everyone: sweet and fruity Port Wine, smoky and nutty Gouda & Beer, sweet and punchy Gorgonzola, and Philadelphia's new classic Abbruzze.

- 2750 Di Bruno Bros. Pinot Grigio & Fig Cheese Spread
  - 2751 Di Bruno Bros. Smoked Gouda & Beer Cheese Spread
  - 2752 Di Bruno Bros. Provolone & Chianti Cheese Spread
  - 2753 Di Bruno Bros. Gorgonzola Cheese Spread
  - 3143 Di Bruno Bros. Abbruzze Cheese Spread
  - 3144 Di Bruno Bros. Roasted Garlic & Herb Cheese Spread
  - 3145 Di Bruno Bros. Port Wine Cheese Spread
  - 3146 Di Bruno Bros. Cheddar & Horseradish Cheese Spread
- All above: 6/7.6 oz



# ESTI HUMMUS



- 3403 Esti Original Recipe Hummus
- 3404 Esti Kalamata Olives Hummus
- 3405 Esti Roasted Garlic Hummus
- 3406 Esti Caramelized Onion Hummus
- 3626 Esti Roasted Zucchini Hummus
- 3633 Esti Lemon Hummus
- 3634 Esti Roasted Red Pepper Hummus
- 3635 Esti Jalapeño Hummus
- 3636 Esti Eggplant Hummus
- 3656 Esti Pesto Hummus



- All Above - 8/10oz**
- 3661 Esti Organic Hummus - **8/8 oz**



- 3415 Esti Grab N' Go Hummus W/ Pita **12/4.6oz**



- 3400 Esti Baba Ghanoush - **8/10oz**
- 3401 Esti Spinach Artichoke - **8/10oz**
- 3414 Esti Tzatziki - **8/10oz**
- 3423 Esti Cool As A Cucumber - **8/10oz**
- 3424 Esti Guacamole - **8/8oz**
- 3627 Esti Lemon Fava Bean Dip - **8/10oz**
- 3630 Esti Salmon Spread - **8/10oz**
- 3658 Esti Lemon Tzatziki - **8/8oz**
- 3662 Esti Organic Tzatziki - **8/8oz**



Esti Foods' hummus and dips are made from original Mediterranean recipes, using Non-GMO, Gluten-free ingredients and have no preservatives. Our advanced HPP (High Pressure Processing) method uses ordinary water to disable any harmful bacteria and promises a long shelf life and a week-long freshness after opening.



<b>SPREADS &amp; DIPS: GARDEN FRESH</b>		
9034	GARDEN FRESH BLACK BEAN AND CORN SALSA	6/16 oz
9038	GARDEN FRESH MANGO PEACH SALSA	6/16 oz
9036	GARDEN FRESH MEDIUM SALSA	6/16 oz
9035	GARDEN FRESH MILD SALSA	6/16 oz
9037	GARDEN FRESH SWEET ONION SALSA	6/16 oz
9033	GARDEN GARDEN FRESH HOT SALSA	6/16 oz
<b>SPREADS AND DIPS: ITHACA COLD-CRAFTED</b>		
4611	ITHACA COLD-CRAFTED CLASSIC HUMMUS	6/10 OZ
4614	ITHACA COLD-CRAFTED LEMON BEET HUMMUS	6/10 OZ
4612	ITHACA COLD-CRAFTED LEMON DILL HUMMUS	6/10 OZ
4617	ITHACA COLD-CRAFTED EVERYONE BAGEL HUMMUS	6/10OZ
4610	ITHACA COLD-CRAFTED LEMON GARLIC HUMMUS	6/10 OZ
4613	ITHACA COLD-CRAFTED RSTD RED PEPPER HUMMUS	6/10 OZ
<b>SPREADS AND DIPS: MT VIKOS</b>		
3190	MT. VIKOS MEZA RED PEPP FETA SPREAD	6/7.7 OZ
3191	MT VIKOS MEZA KALAMATA OLIVE SPREAD	6/7.6 OZ
3192	MT VIKOS MEZA ROASTED EGGPLANT SPRD	6/7.3 OZ
3197	MT. VIKOS MEZA ARTICHOKE SPREAD	6/7.3 OZ
<b>SAUCES: RANDAZZO'S</b>		
8901	RANDAZZO'S VODKA SAUCE	6/15 OZ
8906	RANDAZZO'S BASIL PESTO SAUCE	12/6.5 OZ
<b>SAUCES: ZAB'S</b>		
65430	ZAB'S ORIGINAL HOT SAUCE 12/6 OZ	12/6 OZ
65431	ZAB'S ST. AUGUSTINE HOT SAUCE 12/6	12/6 OZ
65432	ZAB'S ORIGINAL STING HOT HONEY 6/12	6/12 OZ
65433	ZAB'S HOT HONEY MUSTARD	6/9.2 OZ
<b>WRAPS &amp; BREADS: TUMARO'S</b>		
4909	TUMAROS LOW CARB WRAPS 8' GARDEN VEG	6/11.2 oz
4903	TUMAROS LOW CARB WRAPS 8' HNY WHEAT	6/11.2 oz
4908	TUMAROS LOW CARB WRAPS 8' MULTIGRAIN	6/11.2 oz
4904	TUMAROS LOW CARB WRAPS 8' PREM WHITE	6/11.2 oz
4902	TUMAROS LOW CARB WRAPS 8' WHOLEWHEAT	6/11.2 oz
<b>CRACKERS ,COOKIES, AND CHIPS: 34 DEGREES</b>		
7811	34 DEGREES GLUTEN FREE ORIGINAL CRISPS	18/4.5 oz
7810	34 DEGREES NATURAL CRISPBREAD	18/4.5 oz
7813	34 DEGREES PEPPER CRISPBREAD	18/4.5 oz
7817	34 DEGREES ROSEMARY CRISPBREAD	18/4.5 oz
7818	34 DEGREES WHOLE GRAIN CRISPBREAD	18/4.5 oz
<b>CRACKERS ,COOKIES, AND CHIPS: AGOUR-PREORDER</b>		
91150	AGOUR CIGARILLOS COOKIES 12/5.4 OZ	12/5.4 OZ
91151	AGOUR CIGARILLOS CHOCOLATE COOKIES	12/7 OZ

9038



4614



3192



65430



- 8730 Bjorn Qorn Classic Popcorn - 12/3oz**
- 8731 Bjorn Qorn Spicy Popcorn - 12/3oz**
- 8732 Bjorn Qorn Cloudy Popcorn - 12/3oz**
- 8733 Bjorn Qorn Classic Popcorn Mini - 30/1oz**
- 8734 Bjorn Qorn Earth Truffle Flavor Popcorn - 12/3oz**
- 8735 Bjorn Qorn Maple Popcorn - 12/3oz**

Bjorn Qorn uses homegrown non-gmo popcorn and season with all natural, gluten free, and vegan ingredients.

There is no butter or cheese!

BjornQorn's special flavor comes from nutritional yeast, which is a high protein and high B-vitamin seasoning that is popular in vegan cuisine, but is especially great on popcorn.



- 7915 Brewer's Sea Salt Flatbread**
- 7916 Brewer's Everything Flatbread**
- Both - 12/5oz**



This cracker has EVERYTHING. A balance of familiar tastes and worldly flavors. From the familiar SESAME, GARLIC and POPPY to the classic ROSEMARY & THYME, it is all in there!

Brewer's Sea Salt Flatbreads is their way of saying "crunch on". With a healthy amount of whole grains and the perfect amount of sea salt. They pair perfectly with cheese, soup, salad or just to snack on.

- 7914 Brewers Baked Pita Chips Rosemary**
- 7919 Brewers Baked Pita Chips Sea Salt**
- Both - 6/7oz**

Brewer's makes their chips using Up-Cycled brewery grains, a valuable byproduct from the beer making process. When making beer, brewers steep super high-quality grains, like barley, in water. They then strain this mixture, keeping the liquid to make beer and discard the "spent" grains. Turns out, these grains are still incredibly flavorful and nutritious.



<b>CRACKERS ,COOKIES, AND CHIPS: CARR'S</b>		
7521	CARR'S TABLEWATER CRACKERS 1/2 BOX	24/2.2 oz
7515	CARR'S TABLEWATER CRACKERS ENTERTAINMENT 7.05 OZ	12/7.05 oz
7514	CARR'S TABLEWATER CRACKERS PEPPER	12/4.25 oz
7510	CARR'S TABLEWATER CRACKERS PLAIN	12/4.25 oz
7513	CARR'S TABLEWATER CRACKERS ROSEMARY	12/4.5 oz
7512	CARR'S TABLEWATER CRACKERS SESAME	12/4.25 oz
7527	CARR'S TABLEWATER CRACKERS WHOLE WHEAT	12/7 oz
<b>CRACKERS ,COOKIES, AND CHIPS: COLLETTY'S</b>		
8674	COLLETTYS OATMEAL & RAISIN COOKIE	8/4 OZ
8675	COLLETTYS CINNAMON CHOCOLATE COOKIE	8/4 OZ
<b>CRACKERS ,COOKIES, AND CHIPS: CELLO</b>		
8231	CELLO CHEDDAR WHISPS	12/2.12 oz
8230	CELLO PARMESAN WHISPS	12/2.12 oz
<b>CRACKERS ,COOKIES, AND CHIPS: EFFIE'S HOMEMADE</b>		
8201	EFFIE'S GINGER BISCUIT 12/7.2OZ	12/7.2 OZ
8200	EFFIE'S ALMOND BISCUIT 12/7.2OZ	12/7.2 OZ
8202	EFFIE'S PECAN BISCUIT 12/7.2OZ	12/7.2 OZ
8203	EFFIE'S WALNUT BISCUIT 12/7.2OZ	12/7.2 OZ
8209	EFFIE'S COCOACAKES -X	12/7.2 Oz
8206	EFFIE'S CORNCAKES	12/7.2 oz
8205	EFFIE'S OATCAKES	12/7.2 oz
<b>CRACKERS ,COOKIES, AND CHIPS: FIREHOOK</b>		
7334	FIREHOOK CRACKER GARLIC -THYME	12/8 oz
7332	FIREHOOK CRACKER MULTIGRAIN FLAX	12/8 oz
7336	FIREHOOK CRACKER ROSEMARY SEASALT	12/8 oz
7330	FIREHOOK CRACKER SEA SALT	12/8 oz
7331	FIREHOOK EVERYTHING BAGEL 8OZ	12/8 oz
7323	FIREHOOK MINI GARLIC 8/5.5OZ	8/5.5OZ
7329	FIREHOOK MINI EVERYTHING BAGEL	8/5.5 oz
7326	FIREHOOK MINI ROSEMARY	8/5.5 oz
7325	FIREHOOK MINI SEA SALT	8/5.5 oz
7327	FIREHOOK MINI MULTIGRAIN 8/5.5OZ	8/5.5oz

**8676**



**8674**



**8200, 8201, 8202, 8203, 8205, 8206**

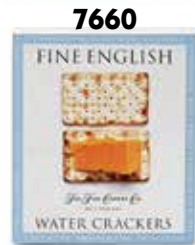


7645 Fine Cheese Co. Walnut, Honey & EVO 6/4.4oz  
 7646 Fine Cheese Co. Fig, Honey & Extra Virgin Oil 6/4.4oz  
 7665 Fine Cheese Co. Olive Oil Crackers 6/4.4oz  
 7858 Fine Cheese Co Cranberry Cherry EVO 6/125g  
 7859 Fine Cheese Co. Lemon Seasalt EVO Cracker 6/4.4oz  
 CR940 Fine Cheese Co Rosemary 6/4.4oz

7678 FCC. Heritage Wheat Rounds  
 7679 FCC. Heritage Charcoal Squares  
 7682 FCC. Heritage Bath Squares  
**Above Three - 6/5.3oz**  
 7856 FCC. Gluten Free EVOO & Sea Salt Crackers  
 7857 FCC. Gluten Free Charcoal Crackers  
**Above Two - 6/110g**

7848 Fine Cheese Co. Rosemary Mini 100/15g  
 7849 Fine Cheese Co. Evoo & Salt Mini 100/15g

7659 FCC. Gluten Free Water Crackers **12/5.99oz**  
 7660 FCC. Water Crackers **12/5.3oz**



7648 Toasts For Cheese Quince Pecan Poppy 6/3.5oz  
 7650 Toasts 4 Cheeses, Dates, Hazelnuts, & Pumpkin 6/3.5oz  
 7652 Toasts 4 Cheeses, Apricots, Pistachios, & Sunflower 6/3.2oz  
 7654 Toasts For Cheeses, Cherries, Almonds, & Linseeds 6/3.2oz  
 7865 Toasts For Cheese Gluten Free Cherry/ Almond 6/3.2oz



<b>CRACKERS ,COOKIES, AND CHIPS: FLUFA</b>		
93160	FLUFA W/ SWISS CHEESE 18/5OZ	18/5OZ
93190	ROSETTES FLUFA TETE DI MOINE 18/5OZ	18/125G
<b>CRACKERS ,COOKIES, AND CHIPS: IBIZA</b>		
62170	IBIZA FLEUR DE SEL POTATO CHIPS 45G	18/45G
62174	IBIZA SALT&SHERRY VINEGAR CHIPS 45G	18/45G
62172	IBIZA WHITE TRUFFLE POTATO CHIP 45G	18/45G
62171	IBIZA FLEUR DE SEL POTATO CHIP 125G	12/125G
62175	IBIZA SALT&SHERRY VINEGAR CHIP 125G	12/125G
62173	IBIZA WHITE TRUFFLE POTATO CHIP125G	12/125G
62177	IBIZA FLOWERED ALMONDS 8/80G	8/80G
62179	IBIZA LUXE NUT MIX 8/80G	8/80G
62178	IBIZA BBQ SMOKEY PEANUTS 8/80G	8/80G
62176	IBIZA CAJUN CASHEWS 8/80G	8/80G
<b>CRACKERS ,COOKIES, &amp; CHIPS: ITALIAN SPECIALTIES</b>		
53810	MADAIO TOZZETTI CRACKERS 6/300G	6/300G

**93160**



**93190**



**62170**



**62172**



**62176**



**53810**



	<b>CRACKERS ,AND CHIPS: GREEN MT. GRINGO</b>	
7695	GREEN MTN GRINGO TORTILLA STRIPS	12/8 oz
	<b>CRACKERS ,COOKIES, AND CHIPS: INES ROSALES</b>	
7763	INES ROSALES CINNAMON TORTA	10/6.34 oz
7765	INES ROSALES ORIGINAL MINI TORTA	12/4.44 oz
7757	INES ROSALES MANCHEGO MINI TORTA	
7762	INES ROSALES ROSEMARY TORTA	10/6.34 oz
7761	INES ROSALES SEVILLA ORANGE TORTA	10/6.34 oz
7760	INES ROSALES SWEET OLIVE TORTA	10/6.34 oz
	<b>CRACKERS: JENNIFER'S HOMEMADE BREADSTICKS</b>	
8755	JENNIFER'S BREADSTICKS ORIGINAL	12/5 oz
8756	JENNIFER'S BREADSTICKS ROSEMARY	12/5 oz
8754	JENNIFER'S BREADSTICKS SALT & PEPPER	12/5 oz
8758	JENNIFER'S FLATBREAD ORIGINAL	12/5 oz
8759	JENNIFER'S FLATBREAD ROSEMARY	12/5 oz
8757	JENNIFER'S FLATBREAD SALT & PEPPER	12/5 oz
	<b>CRACKERS ,COOKIES, AND CHIPS: KAME</b>	
7951	KAME RICE CRACKER BLACK SES SOY	12/3.5 oz
7945	KAME RICE CRACKERS PLAIN	12/3.5 oz
7948	KAME RICE CRACKERS SEAWEED	12/3.5 oz
7946	KAME RICE CRACKERS SESAME	12/3.5 oz
7947	KAME RICE CRACKERS WASABI	12/3.05 oz
	<b>CRACKERS ,COOKIES, AND CHIPS: LA PANZANELLA</b>	
7611	LA PANZANELLA CROCCANTINI MINI MULTIGRAIN	12/6 oz
7605	LA PANZANELLA CROCCANTINI MINI ORIGINAL	12/6 oz
7607	LA PANZANELLA CROCCANTINI MINI ROSEMARY	12/6 oz
	<b>CRACKERS ,COOKIES, AND CHIPS: LAIKI</b>	
7920	LAIKI BLACK RICE CRACKERS	8/3.5 oz
7921	LAIKI RED RICE CRACKERS	8/3.5 oz
	<b>CRACKERS ,COOKIES, AND CHIPS: LES TRIOS PETIT COCHONS</b>	
5909	LES TROIS ORGANIC PETIT TOAST	24/2.8 oz
7964	LES TROIS ORGANIC WHOLE WHEAT MINI TOAST	24/2.8 oz
7966	LES TROIS PETIT MINI TOAST 2.75OZ	24/2.75 oz

**7765**



**8755**



**7921**



**7920**



<b>CRACKERS ,COOKIES, AND CHIPS: MACY'S</b>		
8078	MACYS CHEDDAR & ASIAGO CRISPS PARTY BAG	12/11 oz
8055	MACYS CHEESETICKS MELTING PARMESAN	12/4 oz
8050	MACYS CHEESETICKS ORIGINAL CHEDDAR	12/4 oz
8051	MACYS CHEESETICKS ROMANO GARLIC	12/4 oz
8071	MACY'S CRISPS ASIAGO CHEDDAR	12/5 oz
8058	MACYS CRISPS SESAME GRUYERE	12/4 oz
<b>CRACKERS ,COOKIES, AND CHIPS: MARIO FONGO</b>		
92194	FONGO GRISSINI INTEGRALE 24/200G	24/200g
92190	FONGO LINGUA DI SUOCERA CRACKERS 12/200G	12/200g
92195	FONGO MINI GRISSINI 20/100G	20/100g
92191	FONGO MINI LINGUA CRACKERS 20/100G	20/100g
<b>CRACKERS ,COOKIES, AND CHIPS: MARY'S GONE CRACKERS</b>		
8101	MARYS GONE CRACKERS HERB	6/6.5 oz
8100	MARYS GONE CRACKERS ORIGINAL	6/6.5 oz
<b>CRACKERS ,COOKIES, AND CHIPS: NATURAL NECTAR</b>		
8151	CRACKLEBRED GLUTEN FREE MULTIGRAIN	12/3.5 oz
8150	CRACKLEBRED GLUTEN FREE ORIGINAL	12/3.5 oz
7155	NATURAL NECTAR BLACK TRUFFLE CHIPS	9/5 oz
7154	NATURAL NECTAR ROSEMARY/WHITE TRUFFLE CHP	9/5 oz
<b>CRACKERS ,COOKIES, AND CHIPS: OKINA PYRENEES BISCUITS</b>		
78716	OKINA PYRENEES BISCUIT OSSAU/PIMENT	12/80G
78719	OKINA PYRENEES BISCUIT W/ GOAT CHEESE	12/80G
78714	OKINA PYRENEES BISCUITS W ROQUEFORT	12/80G
78715	OKINA PYRENEES BISCUITS OSSAU IRATY	12/80G
<b>CRACKERS ,COOKIES, AND CHIPS: OLINA'S</b>		
8825	OLINA'S CRISPS CASHEW AND ROSEMARY	12/5.3 oz
8823	OLINA'S CRISPS CRANBERRY PUMPKIN	12/5.3 oz
8824	OLINA'S CRISPS FIG AND ALMOND	12/5.3 oz
8822	OLINAS GLUTEN FREE PLAIN WAFERS	12/5.3 oz
8820	OLINA'S WATER CRACKERS NATURAL	12/3.5 oz
8821	OLINA'S WATER CRACKERS PEPPER	12/3.5 oz

**7155**



**78719, 78716, 78715**



<b>CRACKERS ,COOKIES, AND CHIPS: OLINA'S</b>		
53883	ONESTO EVERYTHING CRACKERS	12/4 OZ
53880	ONESTO ROSEMARY CRACKERS 12/4OZ	12/4 OZ
53881	ONESTO SEA SALT CRACKERS	12/4 OZ
<b>CRACKERS ,COOKIES, AND CHIPS: PANEVINO WEST ONLY</b>		
CR997	PANEVINO OLIVE W/HERB GRISSINI	12/4 OZ
CR996	PANEVINO CHEDDAR GRISSINI	12/4 OZ
CR998	PANEVINO GRISSINI	12/4 OZ
<b>CRACKERS ,COOKIES, AND CHIPS: PASSPORT</b>		
8410	PASSPORT FLATS EVERYTHING	6/13.3 oz
<b>CRACKERS ,COOKIES, AND CHIPS:PHYLLO CRISPS</b>		
8870	PHYLLO CRISPS APPLE CINNAMON	12/2.8 oz
8872	PHYLLO CRISPS APRICOT HONEY	12/2.8 oz
8871	PHYLLO CRISPS CRANBERRY OAT	12/2.8 oz
<b>CRACKERS ,COOKIES, AND CHIPS: RAINCOAST CRISP</b>		
7839	RAINCOAST CRISP WILD BLUEBERRY ALMOND	12/5.3 oz
7834	RAINCOAST CRISP APRICOT GINGER	12/5.3OZ
7835	RAINCOAST CRISP CRANBERRY HAZELNUT	12/5.3 oz
7838	RAINCOAST CRISP DATE & ALMOND	12/5.3 oz
7836	RAINCOAST CRISP FIG & OLIVE	12/5.3 oz
7837	RAINCOAST CRISP ROSEMARY RAISIN PECAN	12/5.3 oz
<b>CRACKERS ,COOKIES, AND CHIPS: RUSTIC BAKERY</b>		
91770	RUSTIC VANILLA BEAN SHORTBREAD COOK	12/4 OZ
91772	RUSTIC PECAN SHORTBREAD COOKIES 4OZ	12/4 OZ
CR155	RUSTIC MEYER LEMON SUGAR COOKIE	12/4 OZ
91771	RUSTIC COCOA NIB BAR COOKIES 4OZ	12/4 OZ
91795	RUSTIC EVERYTHING SPICE BITES	12/4 OZ
91756	RUSTIC ROSEMARY FLATBREAD BITES	12/4 OZ
91758	RUSTIC OLIVE OIL&SEL GRIS BITES	12/4 OZ
91706	RUSTIC CRISPS TART CHERRY, COCOA NIB & ALMONDS	12/5 oz
91708	RUSTIC ARTISAN CRISPS APRICOT PISTACHIO & BRANDY	12/5 oz
91707	RUSTIC ARTISAN CRISPS CITRUS, GINGER, & THYME	12/5 oz
91740	RUSTIC BAKERY OLIVE OIL & SEL GRIS FLATBREAD	12/6 oz
91742	RUSTIC BAKERY ROSEMARY & OILVE FLATBREAD 12/6oz	12/6 oz
91741	RUSTIC SWEET ONION CRÈME FRAICHE FLATBREAD 12/6oz	12/6 oz
91729	RUSTIC FLATBREAD EVERYTHING SPICE	12/6OZ
CR166	RUSTIC SINGLE OLIVE OIL/SEL GRIS	150/0.7 OZ

**91756**

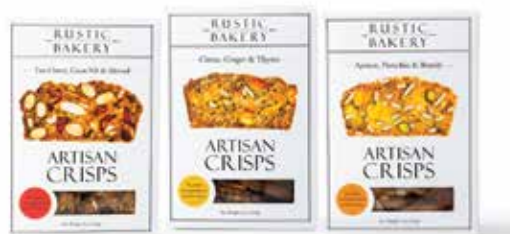


**8870, 8871, 8872**



**74**

**7935**



**91706, 91707, 91708**

<b>CRACKERS ,COOKIES, AND CHIPS: RUTHERFORD &amp; MEYER</b>		
<b>WEST STOCK ONLY</b>		
62687	R&M CRACKER BITES SWEET POTATO	12/4.9OZ
62689	R&M CRACKER BITES CHICKPEA	12/4.9OZ
62691	R&M GOURMET WAFERS NATURAL	12/2.1OZ
62692	R&M GOURMET WAFERS GARLIC& OLIVEOIL	12/2.1OZ
62693	R&M PLATTER BOX 12/13.1 OZ	12/13.1 OZ
62694	R&M SPENT GRAIN 12/13.1 OZ	12/13.1 OZ
62696	R&M CRACKER BITES BEET ROOT	12/4.9OZ
62701	UGP ORANGE AND SESAME GRAIN CRISPS	12/3.17 OZ
62702	UGP CRANBERRY AND COCONUT GRAIN CRI	12/3.17 OZ
62704	UGP RAISIN AND ROSEMARYGRAIN CRISPS	12/3.17 OZ
62705	UGP FIG AND CARDAMON GRAIN CRISPS	12/3.17 OZ
<b>CRACKERS ,COOKIES, AND CHIPS: SABATINO</b>		
8367	SABATINO TRUFFLE CRISPS 12/5OZ	12/5OZ
<b>CRACKERS, COOKIES, AND CHIPS: SPORTIE</b>		
92097	GRISSINI RUBATA PARMESAN	12/200G
92093	GRISSINI RUBATA SEA SALT	12/200G
92092	SPORTIE GRISSINI OLVE OIL 150G	21/5 oz
<b>CRACKERS, COOKIES, AND CHIPS: STACY'S</b>		
8671	STACYS PARTY PACK SIMPLY NAKED	6/18 oz
8663	STACYS PITA CHIPS SIMPLY NAKED	12/7.33 oz
<b>CRACKERS, COOKIES, AND CHIPS: TARALLI</b>		
1888	TARALLI CLASSIC	12/8.8 oz
1889	TARALLI FENNEL	12/8.8 oz
<b>CRACKERS, COOKIES, AND CHIPS: TOKETTI</b>		
8780	TOKETTI DI PANE CRACKERS	10/7 oz

62689



62693



92092



8671



8780



8376



92097



1888



# Authentic. Italian. Delicious.

Our selection of fine Tuscan-made crackers adds authenticity to any Italian meal, appetizer, or snack.

Made by third-generation producers versed in the art of Tuscan baking traditions, these Italian-made gallettine have a square shape and add authenticity to any Italian meal or snack. They are not too salty and are made with extra-virgin olive oil and soft "00" wheat, giving them a pleasant nuttiness and a crisp yet buttery texture. The square shape and sturdy weight of these all-natural crackers make them ideal for topping and serving with antipasti.



- 91995 Gallettine Extra Virgin Olive Oil Crackers**
- 91996 Gallettine Rosemary Crackers**
- All above: 16/250 g**

Our delicious Crostini is the same recipe as our Gallettine, but in a smaller rectangular shape.

- 7620 Crostini Crackers EVOO**
- 91918 Crostini Crackers Garlic**
- 7619 Crostini Crackers Rosemary**
- 91930 Crostini Crackers Stone Ground Wheat**
- All above: 12/7 oz**





**GOURMET SNACKS SINCE 1969 · MADE IN SPAIN**

At Torres, since 1969, they produce **unique and gourmet snacks of reference with exceptional quality.** Their philosophy is based on their passion for the quality of raw materials by carefully selecting the finest ingredients in the market, so they can offer an **artisan product with a unique personality in the gastronomy world.**



TORRES VEGGIE  
Available in 90 g

TORRES VEGAN & SUPERFOOD SNACKS  
Available in 70 g

**62405**



**DISCOVER TORRES NEW FLAVOR**

**FRIED EGG** flavored potato chips

With Torres Tapas the company aims to rediscover the classic flavors that represent the Spanish traditional cuisine full of high-quality products and nuances, starting by the traditional recipe of Fried Egg.

62405 Torres Fried Egg Chips 125g 15/125g

62423	Torres Potato Chips Black Truffle 40g	20/40g	62439	Torres Iberico Ham Chips 50g	20/50g
62421	Torres Potato Chips Black Truffle 125g	15/125g	62428	Torres Iberico Ham Chips 150g	15/150g
62407	Torres Potato Chips Black Truffle 500g	5/500g	62431	Torres Med Herb Chips 50 G	20/50g
62402	Torres Cured Cheese Chips 50g	20/50g	62430	Torres Med Herbs Chips 150g	15/150g
62403	Torres Cured Cheese Chips 150g	15/150g	62424	Torres Potato Chips Sea Salt 50g	20/50g
62419	De La Vera Paprika Chips 50g	20/50g	62422	Torres Potato Chips Sea Salt 150g	15/150g
62429	De La Vera Paprika Chips 150g	15/150g	62401	Torres Veggie Sweet Potato Chips	15/90g
62417	Torres Evo Potato Chips 50g	20/50g	62408	Torres Veggie Chips	15/90g
62420	Torres Evo Potato Chips 150g	15/150g	62470	Torres Quinoa Sticks W/Chia	15/70g
62469	Torres Foie Gras Chips 50g	20/50g	62471	Torres Lentil Twists W/Honey	15/70g
62468	Torres Foie Gras Chips 150g	15/150g	62472	Torres Broad Bean Chips	15/70g
			62473	Torres Bean & Pea Bars W/Chili Lime	15/70g

<b>CRACKERS ,COOKIES, AND CHIPS: URBAN</b>		
CR004	URBAN CLASSIC WHITE	12/7.5 OZ
CR014	URBAN 3 SEED	12/7.5 OZ
CR003	URBAN ASIAGO	12/7.5oz
CR001	URBAN OLIVE OIL SEA SALT	12/7.5oz
CR002	URBAN ROSEMARY/PARM	12/7.5oz
<b>CRACKERS ,COOKIES, AND CHIPS: VECCHIO MULINO</b>		
92095	VECCHIO MULINO LINGUETTE 12/200G	12/200G
92096	VECCHIO MULINO MINI LINGUETTE 120G	12/120G
92098	VECCHIO MULINO BIOVETTE DI MAMMA	10/150G
<b>CRACKERS ,COOKIES, AND CHIPS:ALEXIAN</b>		
90640	ALEXIAN OLIVE OIL & SEA SALT CRACKER	12/4 oz
<b>CRACKERS ,COOKIES, AND CHIPS:TORTILLERIA MI NINA</b>		
7910	MI NINA WHITE CORN TORTILLA CHIP	9/12 oz
<b>CRACKERS ,COOKIES, AND CHIPS:UNCLE JERRY'S</b>		
8639	UNCLE JERRY'S EXTRA DARK PRETZELS	12/7 oz
8640	UNCLE JERRY'S SPECIAL PRETZELS	12/7 oz
<b>GRAINS AND PASTA: COMMUNITY GRAINS WEST STOCK</b>		
<b>WEST STOCK ONLY</b>		
8019	COMM GR IP SEEDED WW HEARTH BREAD R	16/18 OZ
8023	COMM GRAINS PASTA TORCHIETTE IP	8/10OZ
8024	COMM GRAINS PASTA PIPE RIGATE IP	8/10 OZ
8025	COMM GRAINS PASTA SPAGHETTI IP 10OZ	12/10 OZ
8022	COMM GRAINS PASTA FETTUCCINE IP	8/10 OZ
8026	COMM GRAINS PASTA FUSILLI IP 10 OZ	8/10 OZ
<b>GRAINS AND PASTA: LLANO SECO WEST STOCK</b>		
64550	LLANO SECO BLACK CALYPSO BEANS 8/16 OZ	8/16 OZ
64555	LLANO SECO BLACK EYED PEAS 8/16 OZ	8/16 OZ
64557	LLANO SECO BLACK TURTLE BEANS 8/16 OZ	8/16 OZ
64552	LLANO SECO CANNELLINI BEANS 8/16 OZ	8/16 OZ
64558	LLANO SECO JACKSON WONDER 8/16 OZ	8/16 OZ
64553	LLANO SECO JACOB'S CATTLE 8/16 OZ	8/16 OZ
64556	LLANO SECO PINQUITO BEANS 8/16 OZ	8/16 OZ
64554	LLANO SECO CANARIO BEANS 8/16 OZ	8/16 OZ
64551	LLANO SECO BABY LIMA BEANS 8/16 OZ	8/16 OZ
<b>GRAINS AND PASTA: TIMELESS</b>		
6174	TIMELESS BLACK BUTTE CHICKPEAS	8/14OZ
6170	TIMELESS FARRO	8/1 LB
TIME07	TIMELESS ORG PURPLE PRAIRIE BARLEY	8/1 LB
TIME02	TIMELESS GREEN LENTILS	8/1 LB
6173	TIMELESS SPANISH BROWN LENTILS 16OZ	8/16OZ
TIME03	TIMELESS HARVEST GOLD LENTILS	8/1 LB
TIME01	TIMELESS BLK BELUGA LENTILS	8/1 LB
TIME05	TIMELESS PETITE CRIMSON LENTIL	8/1 LB
78ME04	TIMELESS FRENCH GREEN LENTILS	8/1 LB

**CR002 CR001**



**90640**



**8639 8640**



**8025**



**6173**



	<b>SPECIALTY DRINKS: BAILLARD</b>	
17210	BAILLARD JUS DE TOM W/ PIMENT DESPE	6/750ML
17216	BAILLARD JUS NECTAR DE PECHE (P)	6/75CL (P)
17211	BAILLARD JUS CASSIS DE BOURGOGNE	6/75CL (P)
17212	BAILLARD JUS DE FRAISES D'ASACE	6/75CL (P)
17213	BAILLARD JUS POIRE WILLIAM PEAR	6/75CL (P)
	<b>SPECIALTY DRINKS: CAL-VALS ORGANIC</b>	
SP385	CLEMENTINE JUICE BIO 12/200 ML	12/6.6 OZ
SP365	CLEMENTINE JUICE BIO 6/1 L	6/1 LT
SP363	LEMONADE BIO 6/1 L	6/1 LT
SP380	TOMATO JUICE BIO 6/1 L	6/1 LT
	<b>CONFECTIONS: BLANXART</b>	
62023	BLANXART MILK CHOC BARS 30/1.05OZ	30/1.05OZ
62025	BLANXART DARK CHOC BARS 30/1.05OZ	30/1.05OZ
62027	BLANXART CHOC BARS HAZLENUTS 1.05OZ	30/1.05OZ
62029	BLANXART CHOC BARS ALMONDS 1.05OZ	30/1.05OZ
	<b>CONFECTIONS: CHARLES CHOCOLATES</b>	
99501	CC SALTY SWEET HAZELNUT BAR	12/3.9 oz
99502	CC TOFFEE COFFEE BAR	12/3.5 oz
99503	CC RUBY CACAO STRAWBERRY BAR	12/3.5 oz
99504	CC RUBY RASPBERRY PISTACHIO BAR	12/3.5 oz
99505	CC RUBY COCOA NIB BRITTLE BAR	12/3.5 oz
99506	CC SALTY SWEET CASHEW BAR	12/3.9 oz
99507	CC SALTY SWEET PECAN CHERRY BAR	12/4.1 oz
99514	CC ODE TO JOY 12/1.3OZ	12/1.3 oz
99515	CC MAC DADDY 12/1.3OZ	12/1.3 oz
99516	CC DON'T MAKE ME SNICKER 12/1.3OZ	12/1.3 oz
99518	CC CHOCOLATE COVERED LEMON PEEL	12/2.8OZ
99519	CC CHOCOLATE COVERED ORANGE PEEL	12/2.8OZ
99520	CC TRIPLE CHOCOLATE HAZELNUTS (P)	12/6.3OZ-P
99521	CC TRIPLE CHOCOLATE ALMONDS (P)	12/6.5OZ-P
99523	CC TOFFEE CHOCOLATE MACADAMIAS (P)	12/6.3OZ-P

**99501, 99502, 99503, 99504, 99505, 99506, 99507**



**99514**



**99518**



<b>CONFECTIONS: COLT'S CHOCOLATE</b>		
83659	COLTS BOLTS BITES DARK BAG 15/10PC	15/10PCS
83658	COLTS BOLTS BITES MILK BAG 15/10PC	15/10PCS
83650	COLTS BOLTS MILK CHOCOLATE	4 (24/2OZ)
83651	COLTS BOLTS DARK CHOCOLATE	4 (24/2OZ)
83654	COLTS BELLA BARK CARAMEL PECAN 10OZ	12/10OZ
83655	COLTS BELLA BARK CARAMEL PECAN 7OZ	12/7OZ
83653	COLTS BELLA BARK CHERRY ALMOND 10OZ	12/10OZ
83660	COLTS BELLA BARK PEANUT BUTTER 10OZ	12/10OZ
83657	COLTS BUMBLE BEE DARK BAGS 15/12PC	15/12PCS
83656	COLTS BUMBLE BEE MILK BAGS 15/12PC	15/12PCS
83652	COLTS BUMBLE BEE MILK BOX 6/12PC	6/12PCS
83664	COLTS CHOCOLATES BROADWAY GRAHAM BG	12/8OZ
83662	COLTS DEMI-DARK MARSHMALLOWS	12/8OZ
83661	COLTS MILK CHOCOLATE MARSHMALLOWS	12/6OZ
83663	COLTS MINT CHOCOLATE MARSHMALLOWS	12/6OZ
<b>CONFECTIONS: JACQUET FRENCH CREPES</b>		
8142	JACQUET BELGIAN WAFFLES	20/3.2 oz
8140	JACQUET CHOCOLATE CREPE	12/6.77 oz
8143	JACQUET PLAIN CREPE	12/10.6 oz
8141	JACQUET STRAWBERRY CREPE	12/6.77 oz
<b>CONFECTIONS: JUNIOR'S CHEESECAKE</b>		
9295	JUNIOR'S PLAIN CHEESECAKE	9/4 oz
9296	JUNIOR'S RASPBERRY CHEESECAKE	9/4 oz
<b>CONFECTIONS: KNIPSCHILDT</b>		
97912	CHOCOPOLOGIE CARAMEL SEA SALT BAR	12/4 oz
97905	CHOCOPOLOGIE TOFFEE PRETZEL BARS	12/4 OZ
98050	CHOCOPOLOGIE FIG & HONEY BAR	12/4 oz
98051	CHOCOPOLOGIE S'MORES BAR	12/4 oz
98052	CHOCOPOLOGIE WHITE ESPRESSO BAR	12/4 oz
98053	CHOCOPOLOGIE VEGAN ELDERBERRY LEMON BAR	12/4 OZ
98054	CHOCOPOLOGIE VEGAN ACAI QUINOA BAR	12/4 OZ
98056	CHOCOPOLOGIE VEGAN PUMPKIN NUT BAR	12/4 OZ

83652



8142



9296



8143



98056



83650, 83651



97912





<b>CONFECTIONS: K+M</b>		
<b>WEST STOCK ONLY</b>		
87437	K+M HOT CHOCOLATE CLASSIC	12/17.6OZ
87438	K+M HOT CHOCOLATE WINTER SPICE	12/17.6OZ
87439	K+M HOT CHOCOLATE COFFEE & SEA SALT	12/17.6OZ
87440	K+M EXTRA VIRGIN DARK CITRUS	12/2.5OZ
87429	K+M EVO DARK ECUADOR	12/2.5 OZ
87433	K+M EVO NICARAGUA MILK	12/2.5 OZ
87441	K+M HACIENDA VICTORIA ECUADOR 85%	12/1.9 OZ
87442	K+M CHOCOLATE YUZU 70%	12/1.9 OZ
87443	K+M CARANERO VENEZUELA CHOC 68%	12/1.9 OZ
87444	K+M CHCOLATE GOLDEN MILK 50%	12/1.9 OZ
87445	K+M CHOCOLATE TRUFFLE FRIES 55%	12/1.9 OZ
87431	K+M EVO DARK NICARAGUA	12/2.5 OZ
87423	K+M EVO MILK COFFEE+SEA SAL	12/2.5 OZ
87434	K+M EVO DARK MILK ECUADOR	12/2.5 OZ
87435	K+M EVO DARK MADAGASCAR	12/2.5 OZ
87422	K+M EVO MILK ECUADOR	12/2.5 OZ
87424	K+M EVO DARK PERU	12/2.5 OZ
87425	K+M EXTRA VIRGIN MILK WINTER SPICE	12/2.5OZ
<b>CONFECTIONS: MOJO MOUSSE</b>		
9300	MOJO DARK CHOCOLATE MOUSSE 6/3OZ	6/3OZ
9301	MOJO WHITE CHOCOLATE MOUSSE 6/3OZ	6/3OZ
9302	MOJO HAZELNUT PRALINE CHOC. MOUSSE	6/3OZ
9304	MOJO PASSION FRUIT MOUSSE	6/3 OZ
<b>CONFECTIONS: RABITOS</b>		
62078	RABITOS CHOC FIGS 10/142G	10/142G
62074	RABITOS FIGS W/CHOCOLATE 10/1 K	10/1 K
62075	RABITOS FIGS W/CHOCOLATE 6/1K	6/1K
62073	RABITOS CHOCOLATE FIG 8 PC 10/125G	10/125G

87440



87435



87425



9304



62074



9301



62078



	<b>CONFECTIONS: SWEETLY</b>	
9281	SWEETLY CHOCOLATE MOUSSE	12/3 oz
9282	SWEETLY LEMON CHEESECAKE	12/3 oz
9284	SWEETLY PLAIN CHEESECAKE	12/3 oz
9283	SWEETLY STRAWBERRY CHEESECAKE	12/3 oz
9280	SWEETLY TIRAMISU	12/3 oz
	<b>CONFECTIONS: TASTE IT</b>	
9878	TASTE IT PRESENTS TIRAMISU 12/12oz	12/12 oz
	<b>CONFECTIONS:TAZA CHOCOLATES</b>	
6247	TAZA SEASALT CHOCOLATE DISC ORGANIC	12/2.7oz
CH2398	TAZA 70% DISCOS CACAO PURO	12/2.7 oz
CH146	TAZA DISCOS ALMOND ORGANIC	12/2.7 oz
CH145	TAZA DISCOS CINNAMON ORGANIC	12/2.7 oz
CH2405	TAZA DISCOS COFFEE	12/2.7 oz
CH142	TAZA DISCOS VANILLA ORGANIC	12/2.7 oz
CH2390	TAZA ORG MX DISCOS GUAJILLO CHILE	12/2.7 oz
6253	TAZA ALMOND MILK CHOCO QUINOA CRNCH	10/10/2.5Oz
6254	TAZA ALMOND MILK CHOC CRUNCH CASHEW	10/10/2.5Oz
6259	TAZA ALMOND MILK CHOCOLATE	10/10/2.5Oz
6255	TAZA DARK CHOCOLATE COVERED ALMONDS	12/3.8OZ
6260	TAZA DARK CHOCOLATE COVERED CASHEWS	12/3.8OZ
6256	TAZA DARK CHOC COVERED HAZELNUT	12/3.8OZ
6257	TAZA SEA SALT AND ALMOND AMAZE BAR	10/2.5OZ
6258	TAZA WICKED DARK 95% AMAZE BAR	10/2.5OZ
6262	TAZA COCONUT AMAZE BAR	10/2.5OZ
6263	TAZA TOFFEE ALMND SEASALT AMAZE BAR	10/2.5OZ
6264	TAZA WICKED DARK TOAST COCNUT AMAZE	10/2.5OZ

**9280**



**9878**



**CH146**



**9281**



**CH2398**



**6257**



<b>CONFECTIONS:TCHO (WEST STOCK/EAST PREORDER)</b>		
89906	TCHO BAR DARK AND BITTER	6/8 OZ
89907	TCHO CRUSH THIS NIBS	6/7.8 Oz
89908	TCHO BAR SWEET AND SASSY	6/8 OZ
89900	TCHO HOLY FUDGE BAR 10/2.5 OZ	6/10/2.5 oz
89901	TCHO BORN FRUITY BAR 10/2.5 OZ	6/10/2.5 oz
89902	TCHO DARK DUO BAR 10/2.5 OZ	6/10/2.5 oz
89903	TCHO AWW NUTS! BAR 10/2.5 OZ	6/10/2.5 oz
89904	TCHO CHOCO LATTE BAR 10/2.5 OZ	6/10/2.5 oz
89905	TCHO TOFFEE TIME BAR 10/2.5 OZ	6/10/2.5 oz
89898	TCHO 95% DEEP DARK FTO BAR 6X12/70G	6/12/70G
89899	TCHO PRETZEL CRUNCH FT BAR 6X12/70G	6/12/70G
<b>HORS D'OEUVRES</b>		
9776	FILLO FACTORY ASSORTED QUICHE 12PC	12/6.25 oz
9772	FILLO FACTORY BRIE/ RASP FILLO ROLL	12/8.75 oz
9767	FILLO FACTORY COCKTAIL FRANKS IN FILLO	12/9 oz
9770	FILLO FACTORY FILLO DOUGH	12/16 oz
9775	FILLO FACTORY FILLO PIE SPIN/CHEESE	12/24 oz
9771	FILLO FACTORY SPINACH & CHEESE	12/12 oz
9805	FILLO FACTORY SCALLOPS WRAPPED W/ BACON	12/4.5 oz
9804	FILLO FACTORY WAGYU BEEF & GORGONZOLA	12/7 oz
9768	FILLO FACTORY WILD MUSHROOM RISOTTO	12/8.5 oz
9807	FILLO FACTORY WILD MUSHROOM TARTS	12/9 oz

**89900, 89901, 89902, 89903, 89904, 89905**



**9767**



**9771**



**WORLD'S BEST CHEESES**



WORLD'S BEST CHEESES  
111 BUSINESS PARK DRIVE  
ARMONK, NY 10504

Get our monthly flyer in your inbox!

Just send your email address by text message:

Text **WBCHEESE** to **22828** to get started.



**WBCHEESES**



**@WBCHEESES**

Message and data rates may apply.

ARMONK, NY | SOMERVILLE, MA | ALAMEDA, CA  
1 (800) THE-BEST

[WWW.WBCHEESE.COM](http://WWW.WBCHEESE.COM)

WORLD'S BEST CHEESES IS NOT RESPONSIBLE FOR TYPOGRAPHICAL ERRORS

FIRST CLASS  
U.S. POSTAGE  
PAID  
WHITE PLAINS, NY  
PERMIT NO. 4472